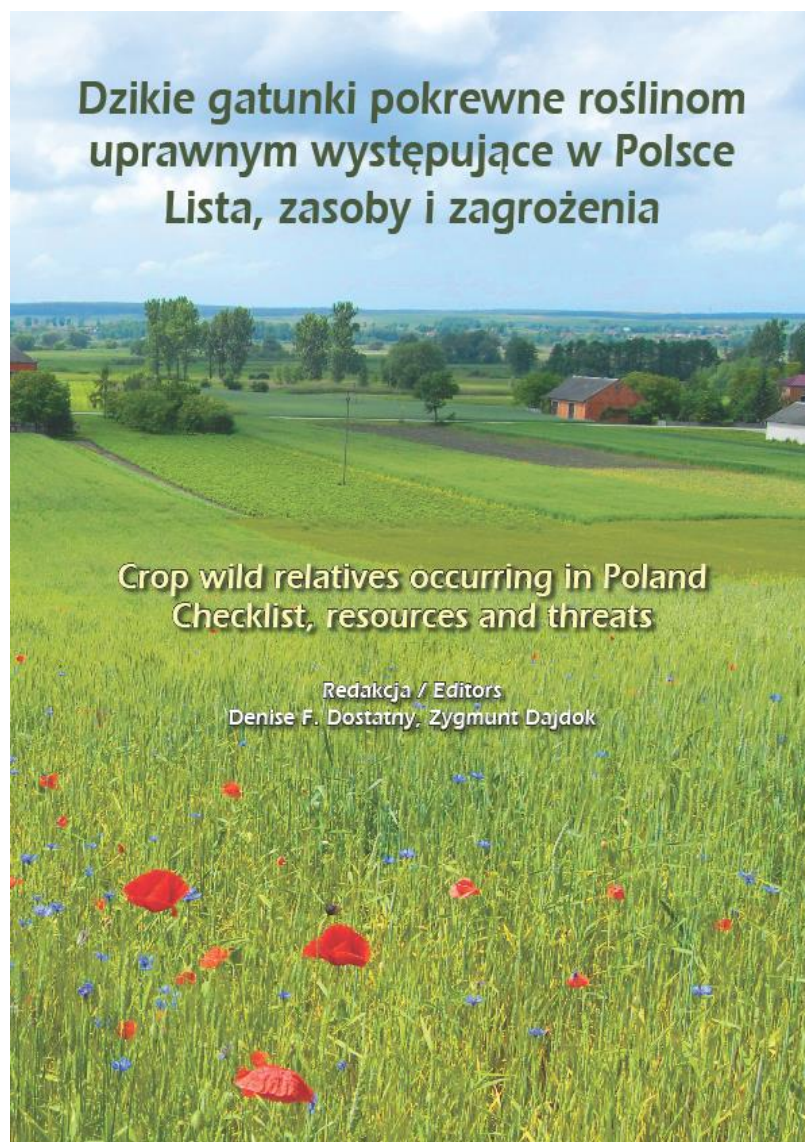


Crop Wild Relatives in Poland Checklist, resources, plans

Renata Kowalik

Plant Breeding and Acclimatization Institute – National Research Institute (IHAR-PIB)

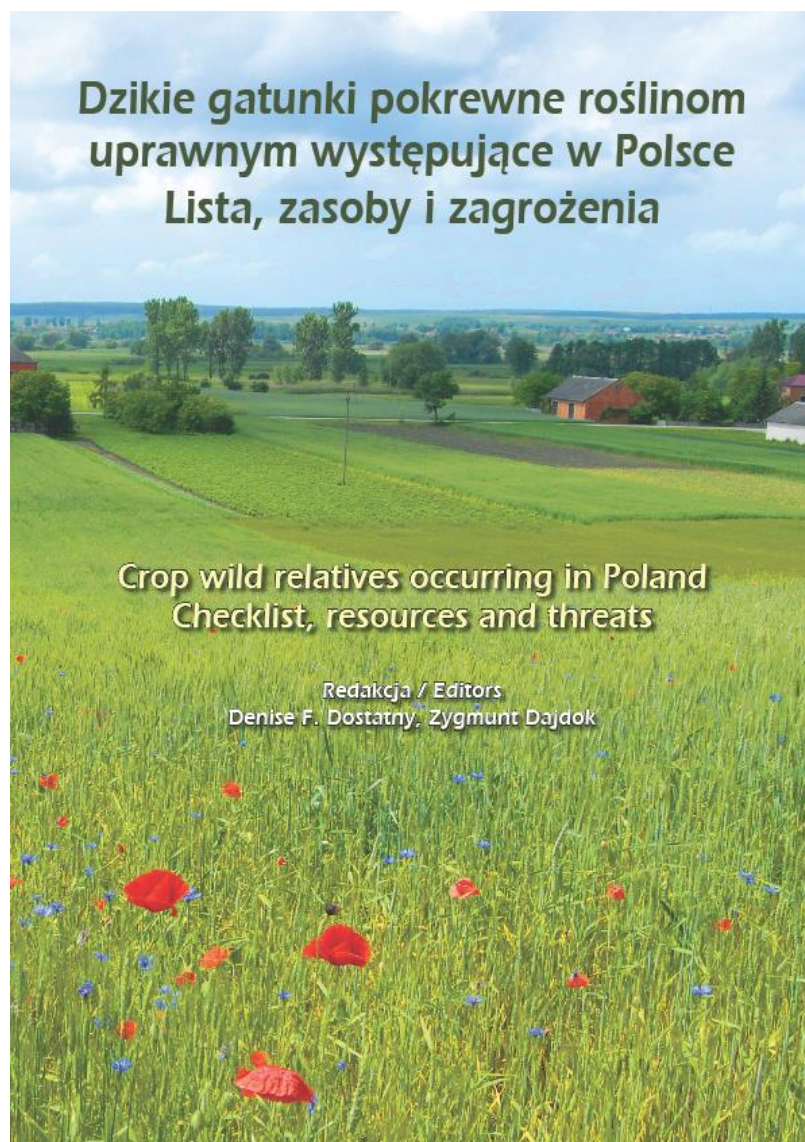


CWR *in situ* in Poland

2020 – checklist of Crop Wild Relatives occurring in Poland has been compiled

This study presents a list of plant species classified as crop wild relatives (CWR – commonly known English abbreviation) occurring in Poland.

CWR is a “wild plant taxon which has an indirect application due to its relatively close genetic relationship with a specific crop”. Thus, crop wild relatives can be defined as all taxa that belong to the same genera as a specific crop species, or could also be the same species as a specific crop species, on condition that it occurs in the wild.



CWR *in situ* in Poland

All taxa (1458 species, aprox. 42% of Polish vascular plants) divided into different groups of useful plants to show in the best way the possibilities for their uses (many species are in few categories):

- plant species important in forestry (includes **65 species**)
- plant species important as aromatic plants (**445 species**)
- plant species important as cosmetic plants (**347 species**)
- plant species important as forage plants (**149 species**)
- plant species important as dye and fiber plants (**308 species**)
- plant species important as edible plants (**810 species**)
- plant species useful in agrocenoses (**213 species**)

<https://bankgenow.edu.pl/dziki-gatunki-pokrewne-roslinom-uprawnym-wystepujace-w-polsce/>

Wild useful plants and CWR in Polish nature protection policy and in tasks of government

- **Ministry of Climate and Environment** – the highest instance for nature protection in Poland, local duties are performed by voivodeship nature conservators -> the activities in the field of nature protection focus on protected areas (23 national parks, 389 protected landscape areas and other forms)
- **Ministry of Agriculture and Rural Development** – sets tasks and supervises the implementation of genetic resource conservation (**National Crop Plant Genetic Resources Protection Program**)

CWR *in situ* initiative – lies mainly in the competence of the Minister of Environment, who is obliged to prepare the program for the protection and sustainable use of biological diversity together with an action plan.




Draft - plan for creating CWR – National Inventory in Poland

Regarding to „The development of CWR-NIs” in „Principles for the Inclusion of CWR Data in EURISCO”

- National checklist of CWR – done
- Prepare a draft of network
- Identification of crops which CWR will be considered: priority, socioeconomical relevance of crops at the national and the international level for example *Avena strigosa*, wild celery populations, European lily of the valley populations (well documented and backed-up in long-term conditions)

KM21-893 (*Convallaria majalis*) no. 508120 POL
 Wild (Dzikorosnący) with name 'KM21-893'. Country of origin is Polska.

Photographs (2)


Evaluation data (1)
 Documents (0)

Passport data

Institute	POL003; Instytut Hodowli i Aklimatyzacji Roślin
Accession Number	508120
Collecting Number	KM21-893
Collecting institute	
Genus	<i>Convallaria</i>
Species	<i>majalis</i>
Species Authority	L.
Subtaxa	
Subtaxa Authority	
Common Crop Name	European lily of the valley
Accession Name	KM21-893
Breeding institute	
Acquisition Date	
Country of origin	POL
Location of Collecting Site	Rakowo
Latitude of Collecting Site	53—N
Longitude of Collecting Site	016—E
Elevation of Collecting Site	158
Collecting Date of Sample	
Biological Status of Accession	Wild (Dzikorosnący)
Ancestral Data	

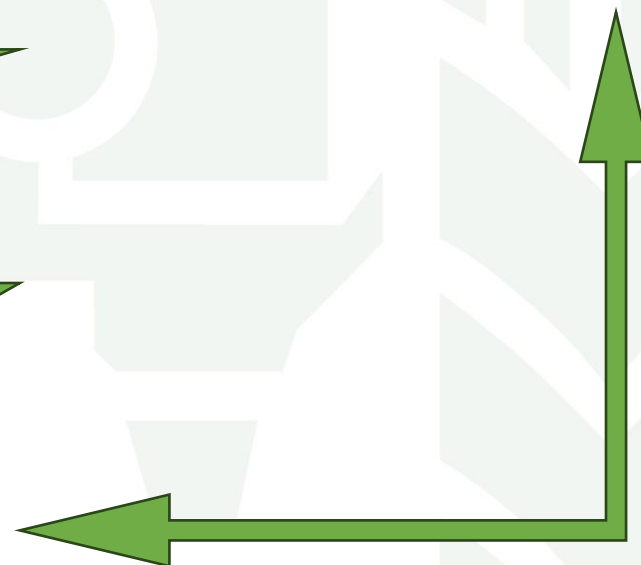
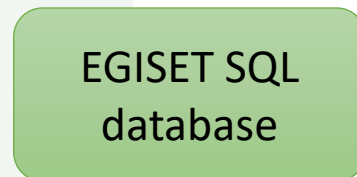
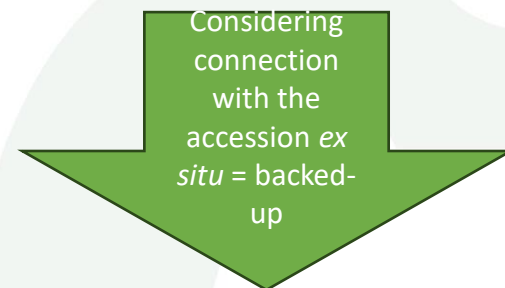
Draft - plan for creating CWR – National Inventory in Poland

- Preparation of proposal of Crop Wild Relatives *in situ* populations
- Preparation a draft of database structure – plan for developing existing database on the base of „Descriptors for uploading *in situ* CWR passport data to EURISCO” - new and modified descriptors



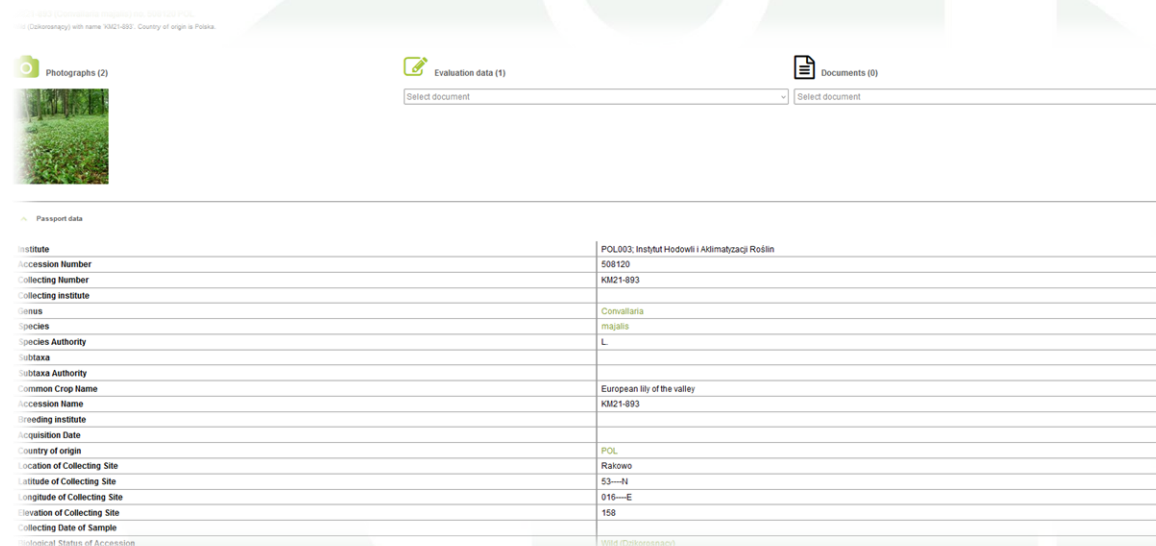
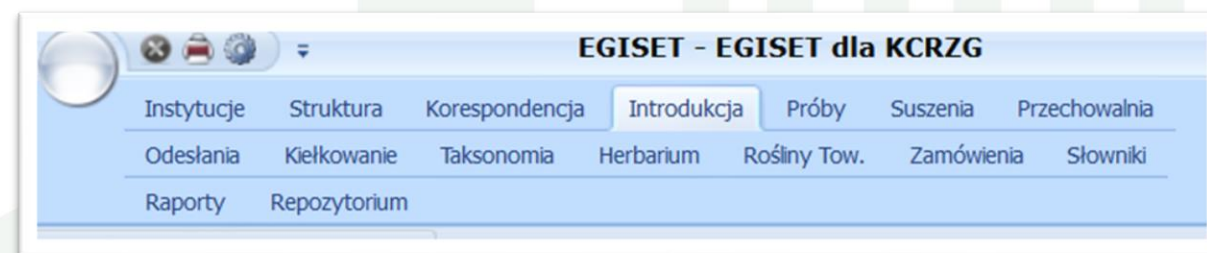
Descriptors for uploading *in situ* CWR passport data to EURISCO

→ LIAISONCODE
 → LIAISONNAME
 → POPSRC
 → SITEPROT



Future plans for developing CWR – National Inventory in Poland

- Adding a module for managing *in situ* CWR data in our EGISET Information System



Questions:

- According to protected or threatened CWR – Do we need another Focal Point for ex. in Ministry of Climate and Environment? How this issue is solved in other countries?
- The issue of creating any other forms of protection for those populations

Thank you for your attention

Radzików
05-870 Błonie, Poland
phone number: +48 22 733 45 00
NIP-PL: 5290007029
REGON: 000079480
e-mail: postbox@ihar.edu.pl
www.ihar.edu.pl

Mgr inż. Renata Kowalik
Contact information
phone number: +48 22 733 46 40
e-mail: r.kowalik@ihar.edu.pl