



Extension of EURISCO for Crop Wild Relatives (CWR) in situ data and preparation of pilot countries' data sets

Albania Report

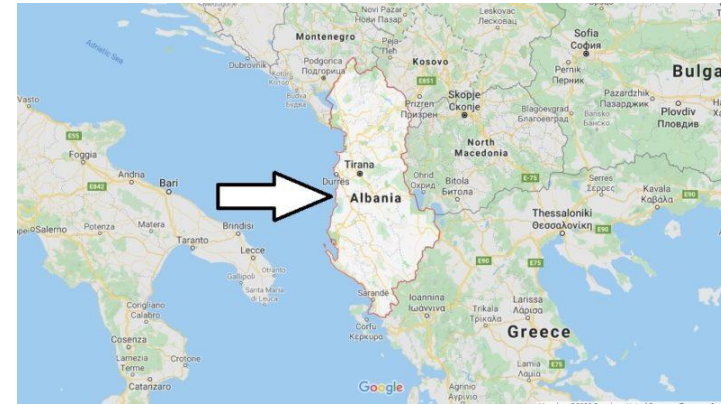
Alban Ibraliu

Agricultural University of Tirana

Email: albanibraliu@ubt.edu.al

Albania represents one of the European countries with a very rich flora

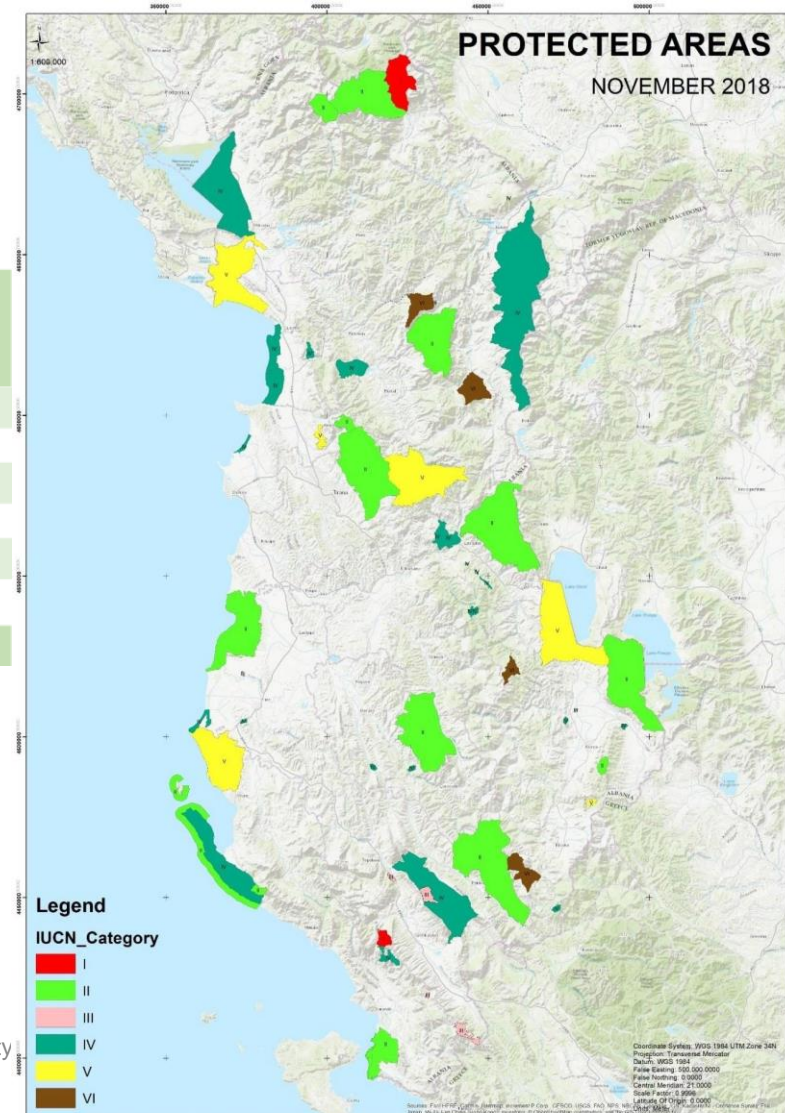
- A high landscape variation/A favorite climate conditions
- Geographic position in Mediterranean regional and in Balkan Peninsula.
- Very rich flora with 3629 plant species or about **30 % of European Flora.**
- 32 endemic species and about 180 sub endemic species.
- It is estimated that more than **800 species** are considered as plant genetic resources (PGR) for food and agriculture.
- More than **472 taxa** of CWR were selected through objective and subjective reasoning to arrive at a list of priority CWRs for Albania



Protected Areas in Albania

IUCN Category	Protected Area Category	No. of PAs	Area (ha)	% of PA System	% of country's territory
I	Strict Nature Reserve	2	12.062,22	2,29	0,42
II	National Park	14	245.863,84	46,71	8,55
III	Nature Monument	750	3.918,25	0,74	0,14
IV	Managed Nature Reserve	25	149.002,56	28,31	5,18
V	Protected Landscape	6	97.256,78	18,48	3,38
VI	Managed Natural Resources	4	18.230,74	3,46	0,63
Total		801	526.334,39	100,00	18,31

Protected Areas are 18.31 % Territory of Albania



List of CWR in Albania

1Abelmoschus	29Crepis	57Onobrychis
2Abies	30Dactylis	58Opuntia
3Aegilops	31Daucus	59Phalaris
4Agrostis	32Dioscorea	60Phleum
5Allium	33Diospyros	61Pimpinella
6Amelanchier	34Diplotaxis	62Pistacia
7Arbutus	35Festuca	63Pisum
8Arctostaphylos	36Ficus	64Poa
9Asparagus	37Foeniculum	65Prunus
10Astragalus	38Fragaria	66Punica
11Atriplex	39Hordeum	67Pyrus
12Avena	40Juglans	68Raphanus
13Barbarea	41Juniperus	69Ribes
14Bellis	42Lactuca	70Rosa
15Berberis	43Laurus	71Rorippa
16Beta	44Lathyrus	72Rorippa
17Brassica	45Lens	73Rubus
18Carum	46Lepidium	74Rumex
19Castanea	47Linum	75Sambucus
20Celtis	48Lolium	76Salsola
21Ceratonia	49Lotus	77Sinapis
22Cichorium	50Lupinus	78Solanum
23Citrullus	51Malus	79Sorbus
24Colchicum	52Medicago	80Trifolium
25Coriandrum	53Melilotus	81Trisetum
26Cornus	54Mespilus	82Triticum
27Coryllus	55Myrtus	83Tilia
28Crataegus	56Olea	84Vaccinium
		85Vicia
		86Vitis



ALBANIA NATIONAL INVENTORY (NI)

ALBANIA NATIONAL INVENTORY for CWR or WFP : Accessions summary by genus:

No	Genus	Accessions
1	Aegilops	34
2	Hordeum	2
3	Arbutus	1
4	Corylus	14
5	Crataegus	2
6	Juglans	36
7	Juniperus	5
8	Malus	12
9	Olea	36
10	Rubus	1
11	Pistacia lentiscus	6
12	Vaccinium	11
13	Prunus	66
14	Punica	7
15	Pyrus	15
16	Vitis vinifera sylvestris	6
	Total	254



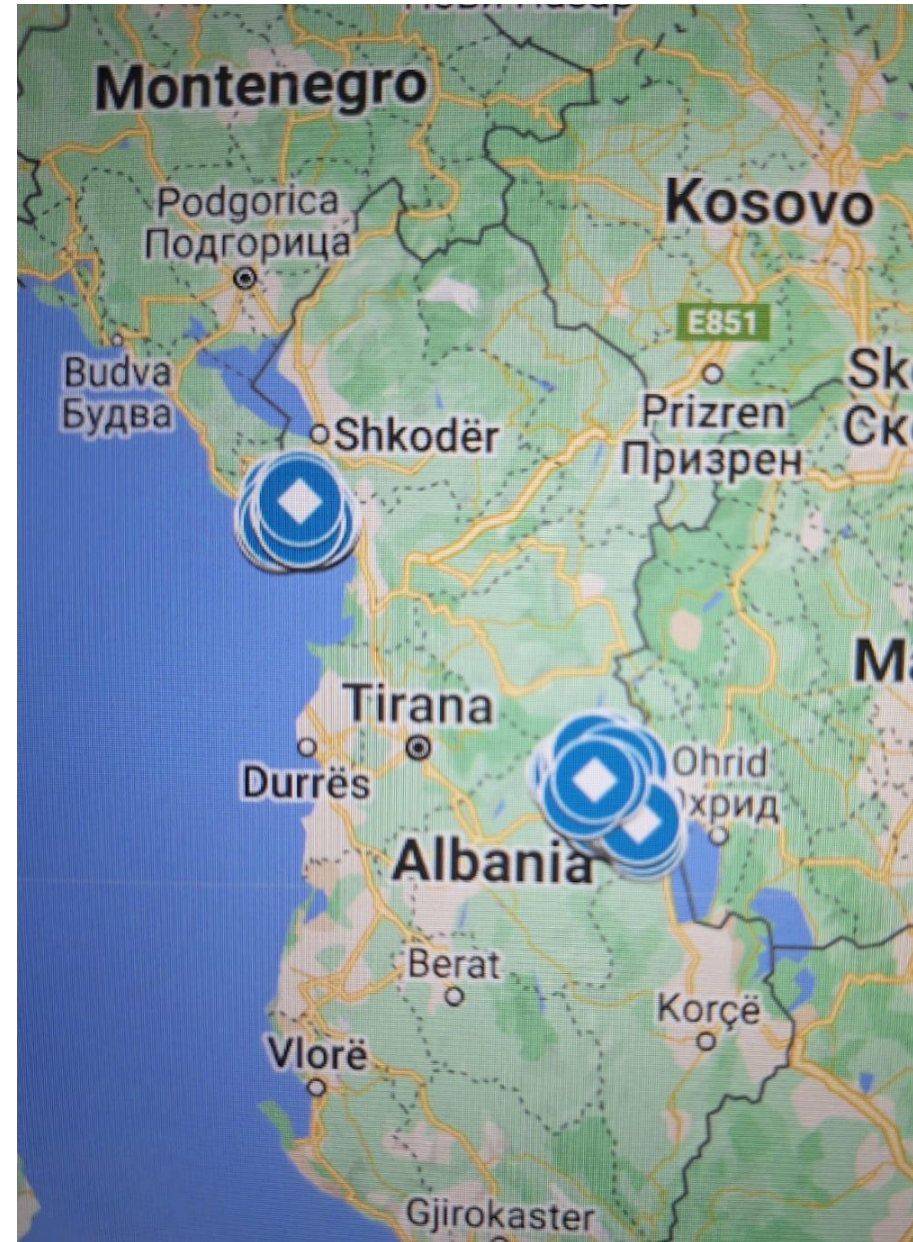
Provide the data of National CWR list to EURISCO

Albania towards NATURA 2000

- We have identified the Natura 2000 protected areas in Albania that have the management plans of protected areas and species action plans and habitats, based on.
- We have selected 2 protected areas:
- **Shebenik-Jabllanicë National Park**
- **The Buna River- Velipojë**

Protected Landscape (BRPL) as case studies.

The intention was to start building the inventory of priority CWR population data from these two areas.



Provide the data to EURISCO

The development of CWR-Nis. The identification and selection of the CWRs of interest for Albania

We have used the data of Natura 2000 for CWR species from both protected areas (Shebenik-Jabllanicë Protected area and Buna-Velipoje Protected area) to create the first nucleus of the Albanian CWR-NI of priority taxa.

The database structure contains:

- information at the taxon level that was used in the generation of the CWR checklist
- Taxonomy of the CWR (family, genus, species, subtaxon, authority, common name)
- Crossability of the CWR with the associated crop (genepool)
- Threat status, legislative protection, endemicity
- Related crop (scientific name and/or common name)

The Species Register (CWR)

Species Detail - Vaccinium myrtillus - Species information displayed is based on the dataset "CWR in ALBANIA - 2018".

Terrestrial Map

Distribution of the number of records in the MAP.

[Download](#) [Live Map](#)



Species image

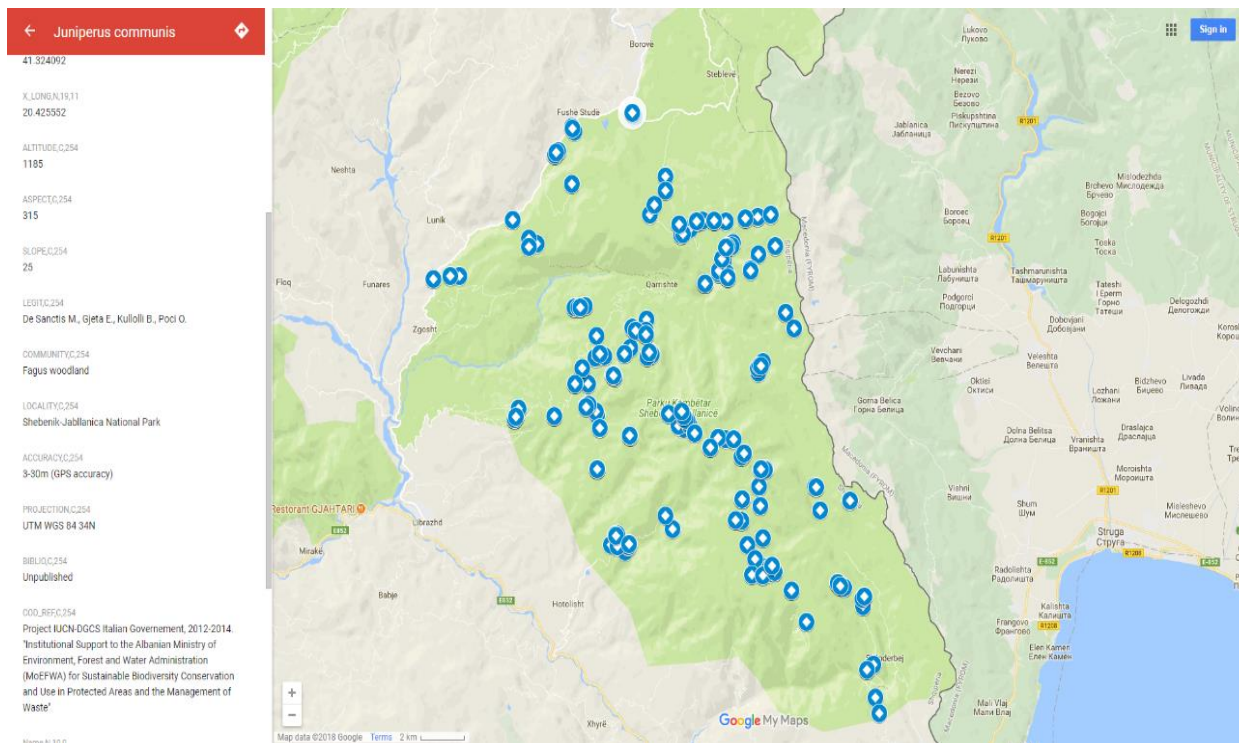


Gender (Latin)	Vaccinium
Specie	myrtillus
Authority	L.
Albanian Name	Thrashegra mërsinë
Family (Latin)	Ericaceae
Family (Albanian)	Shqopore
Gender (Albanian)	Thrashegra
Group	CWR
Rank	Species
Number Of Records	20
Flourishing	May-July
Note	As a bad plant in the grain culture, rarely in thrilling cultures
Oldest Record	/09/1994
Newest Record	22/07/2013
Phenology - earliest record (across all datasets)	6 January (recorded in 2013)
Threat Status	VU - A1b (Rapid decline> 50% for 20 years, reduction of spread, or area occupied by the species concerned, and / or habitat quality)
Reference	Project IUCN-DGCS Italian Government, 2012-2014. "Institutional Support to the Albanian Ministry of Environment, Forest and Water Administration (MoEFWA) for Sustainable Biodiversity Conservation and Use in Protected Areas and the Management of Waters"

In situ conservation of CWR in 2 protected areas

*Based on the data for CWR in these protected area we have uploaded the data of around **610** different CWR taxa in both protected area.*

- To see online the data of CWR for both Protected Area please see : <https://goo.gl/yStPFZ>
- At the same time we can generate different maps of CWR in these protected area as below:



SHEBENIK-JABLLANICE

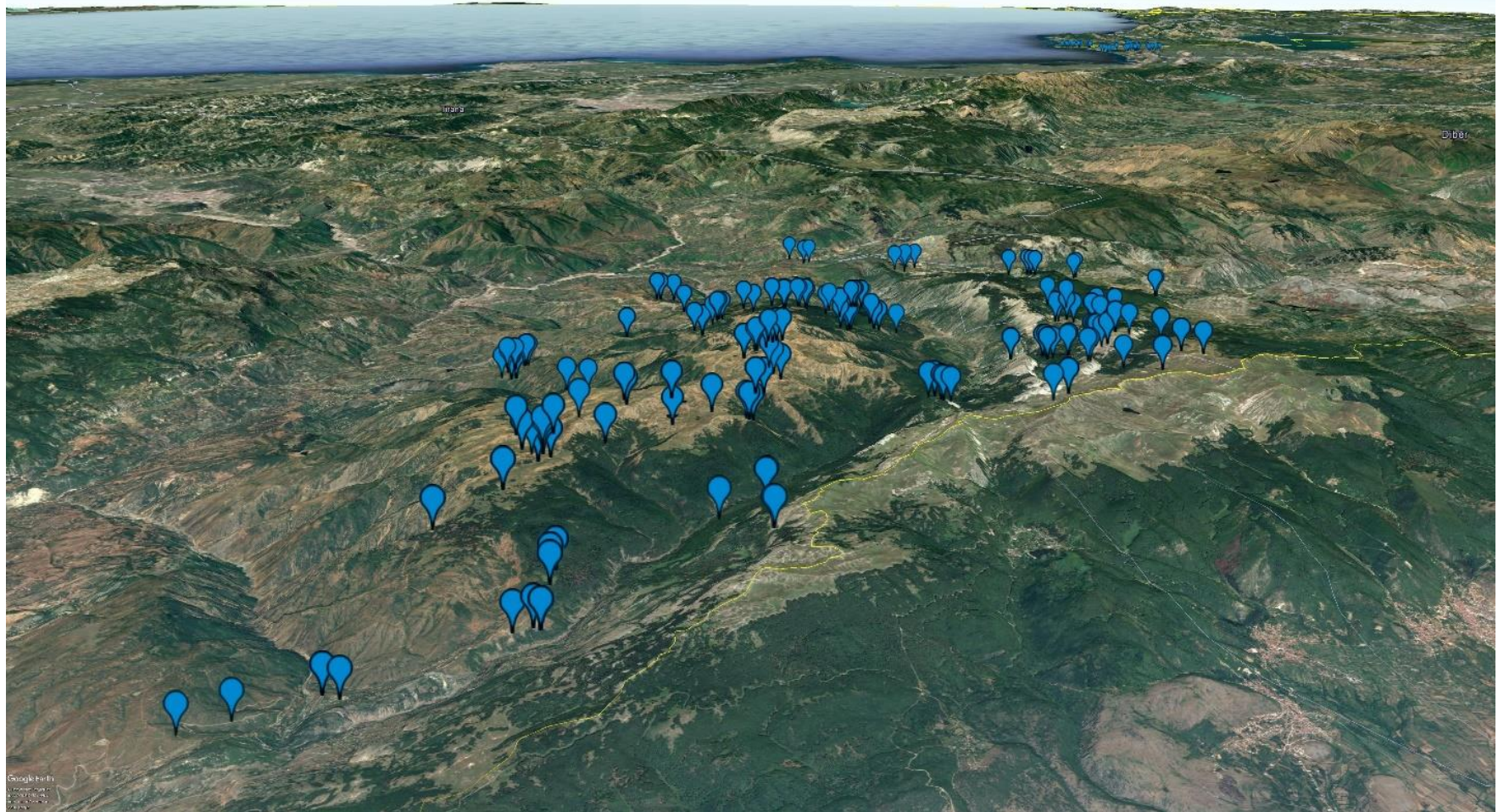


Fig . Maps of the distribution for all CWR species in one Protected area (Shebenik-Jabllanicë Protected area), generated by Google Earth

<https://goo.gl/yStPFZ>

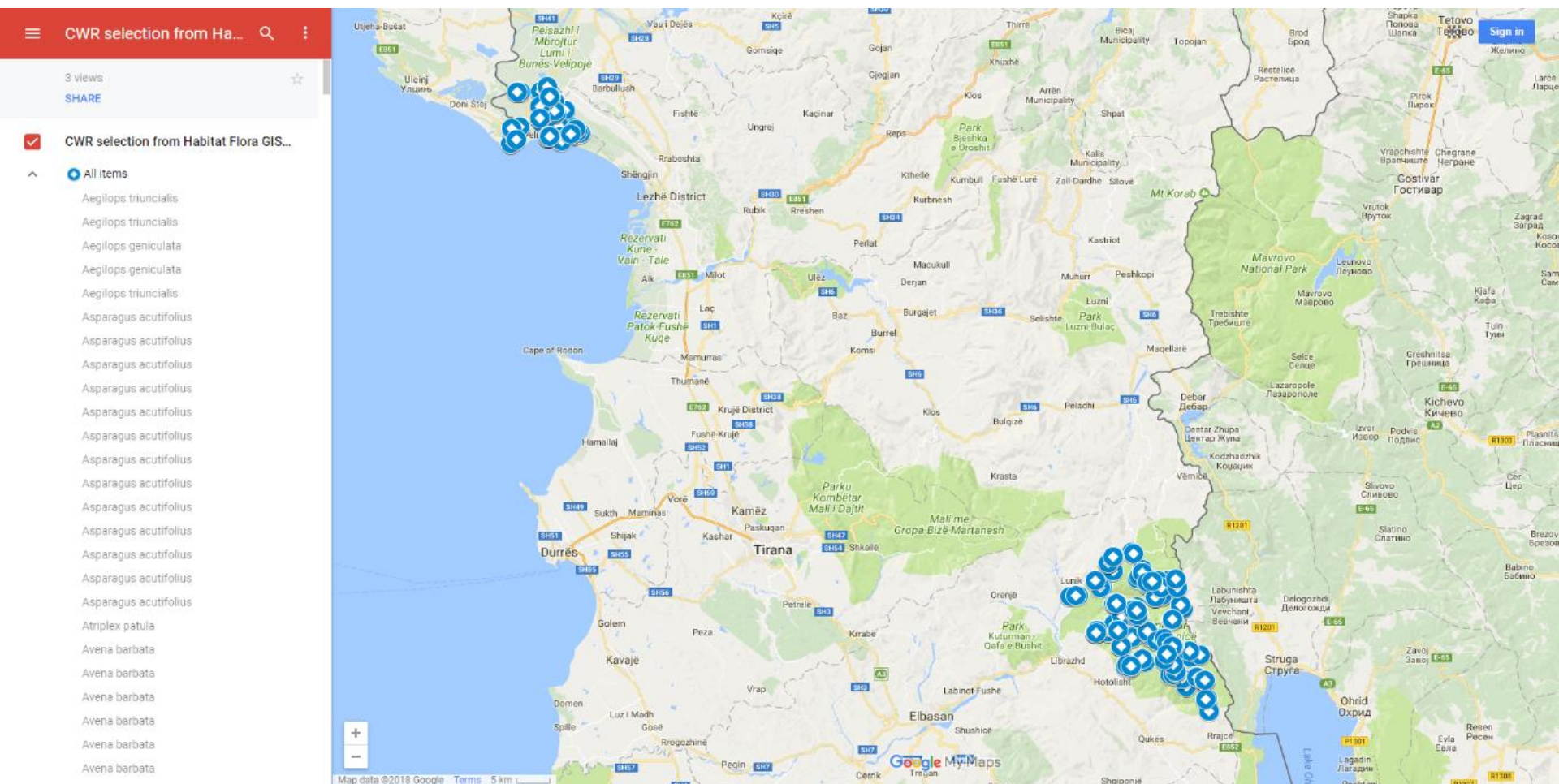


Fig. Maps of the distribution for all CWR species in both protected areas (Shebenik-Jabllanicë Protected area and Buna-Velipoje Protected area), generated by Google Earth.

The National Focal Point of CWR and The National Focal Point of Eurisco of Albania, requested to FAO the INSTCODE for the National Agency of Protected Areas of Albania.

NICO	PUI	INSTCODE	INSTNAME	ACCENUMB	LIAISONCODE	LIAISONNAME
ALB		ALB037	National Agency of Protected Areas of Albania	NAPA0001	ALB026	Plant Genetic Resources Center
ALB		ALB037	National Agency of Protected Areas of Albania	NAPA0002	ALB026	Plant Genetic Resources Center
ALB		ALB037	National Agency of Protected Areas of Albania	NAPA0003	ALB026	Plant Genetic Resources Center
ALB		ALB037	National Agency of Protected Areas of Albania	NAPA0004	ALB026	Plant Genetic Resources Center
ALB		ALB037	National Agency of Protected Areas of Albania	NAPA0005	ALB026	Plant Genetic Resources Center
ALB		ALB037	National Agency of Protected Areas of Albania	NAPA0006	ALB026	Plant Genetic Resources Center
ALB		ALB037	National Agency of Protected Areas of Albania	NAPA0007	ALB026	Plant Genetic Resources Center
ALB		ALB037	National Agency of Protected Areas of Albania	NAPA0008	ALB026	Plant Genetic Resources Center
ALB		ALB037	National Agency of Protected Areas of Albania	NAPA0009	ALB026	Plant Genetic Resources Center
ALB		ALB037	National Agency of Protected Areas of Albania	NAPA0010	ALB026	Plant Genetic Resources Center
ALB		ALB037	National Agency of Protected Areas of Albania	NAPA0011	ALB026	Plant Genetic Resources Center
ALB		ALB037	National Agency of Protected Areas of Albania	NAPA0012	ALB026	Plant Genetic Resources Center
ALB		ALB037	National Agency of Protected Areas of Albania	NAPA0013	ALB026	Plant Genetic Resources Center
ALB		ALB037	National Agency of Protected Areas of Albania	NAPA0014	ALB026	Plant Genetic Resources Center
ALB		ALB037	National Agency of Protected Areas of Albania	NAPA0015	ALB026	Plant Genetic Resources Center
ALB		ALB037	National Agency of Protected Areas of Albania	NAPA0016	ALB026	Plant Genetic Resources Center
ALB		ALB037	National Agency of Protected Areas of Albania	NAPA0017	ALB026	Plant Genetic Resources Center
ALB		ALB037	National Agency of Protected Areas of Albania	NAPA0018	ALB026	Plant Genetic Resources Center
ALB		ALB037	National Agency of Protected Areas of Albania	NAPA0019	ALB026	Plant Genetic Resources Center
ALB		ALB037	National Agency of Protected Areas of Albania	NAPA0020	ALB026	Plant Genetic Resources Center
ALB		ALB037	National Agency of Protected Areas of Albania	NAPA0021	ALB026	Plant Genetic Resources Center
ALB		ALB037	National Agency of Protected Areas of Albania	NAPA0022	ALB026	Plant Genetic Resources Center
ALB		ALB037	National Agency of Protected Areas of Albania	NAPA0023	ALB026	Plant Genetic Resources Center
ALB		ALB037	National Agency of Protected Areas of Albania	NAPA0024	ALB026	Plant Genetic Resources Center
ALB		ALB037	National Agency of Protected Areas of Albania	NAPA0025	ALB026	Plant Genetic Resources Center

Using of descriptors for uploading passport data of in situ CWR to EURISCO

- We have used the Descriptors recommended for the generation of a National Inventory of *in situ* Crop Wild Relatives for the upload of data from the CWR-NI.

[illegible]

COLLSITE	DECLATITUDE	DECLONGITUDE	COORD	ELEVATION	POPSRC	SITEPROT	CONSACTION	SAMPSTAT	OTHERNUM	STORAGE	MLSSTAT
Lumi Bunës-Velipojë	41.914119	19.440381		40	12	6	1	110		60	0
Lumi Bunës-Velipojë	41.89671	19.467012		83	12	6	1	110		60	0
Lumi Bunës-Velipojë	41.862567	19.437228		80	12	6	1	110		60	0
Lumi Bunës-Velipojë	41.902689	19.439133		80	12	6	1	110		60	1
Lumi Bunës-Velipojë	41.915151	19.44207		80	12	6	1	110		60	1
Lumi Bunës-Velipojë	41.904693	19.435233		80	12	6	1	110		60	1
Lumi Bunës-Velipojë	41.874748	19.388668		80	12	6	1	110		60	1
Lumi Bunës-Velipojë	41.911332	19.440457		16	12	6	1	110		60	1
Lumi Bunës-Velipojë	41.908612	19.44948		53	12	6	1	110		60	1
Lumi Bunës-Velipojë	41.886883	19.423374		50	12	6	1	110		60	1
Lumi Bunës-Velipojë	41.875192	19.391453		50	12	6	1	110		60	1
Lumi Bunës-Velipojë	41.875406	19.389989		50	12	6	1	110		60	1
Lumi Bunës-Velipojë	41.886883	19.423374		50	12	6	1	110		60	1
Lumi Bunës-Velipojë	41.921021	19.39056		50	12	6	1	110		60	1
Lumi Bunës-Velipojë	41.915151	19.44207		50	12	6	1	110		60	1
Lumi Bunës-Velipojë	41.908771	19.449184		55	12	6	1	110		60	1
Lumi Bunës-Velipojë	41.927241	19.434963		50	12	6	1	110		60	1
Lumi Bunës-Velipojë	41.886883	19.423374		50	12	6	1	110		60	1
Lumi Bunës-Velipojë	41.866168	19.476649		50	12	6	1	110		60	1
Lumi Bunës-Velipojë	41.891606	19.451679		152	12	6	1	110		60	1
Lumi Bunës-Velipojë	41.864201	19.479804		90	12	6	1	110		60	1
Lumi Bunës-Velipojë	41.921415	19.389408		90	12	6	1	110		60	1
Lumi Bunës-Velipojë	41.862565	19.437228		90	12	6	1	110		60	1
Lumi Bunës-Velipojë	41.896619	19.448258		125	12	6	1	110		60	1
Lumi Bunës-Velipojë	41.89671	19.467012		83	12	6	1	110		60	1

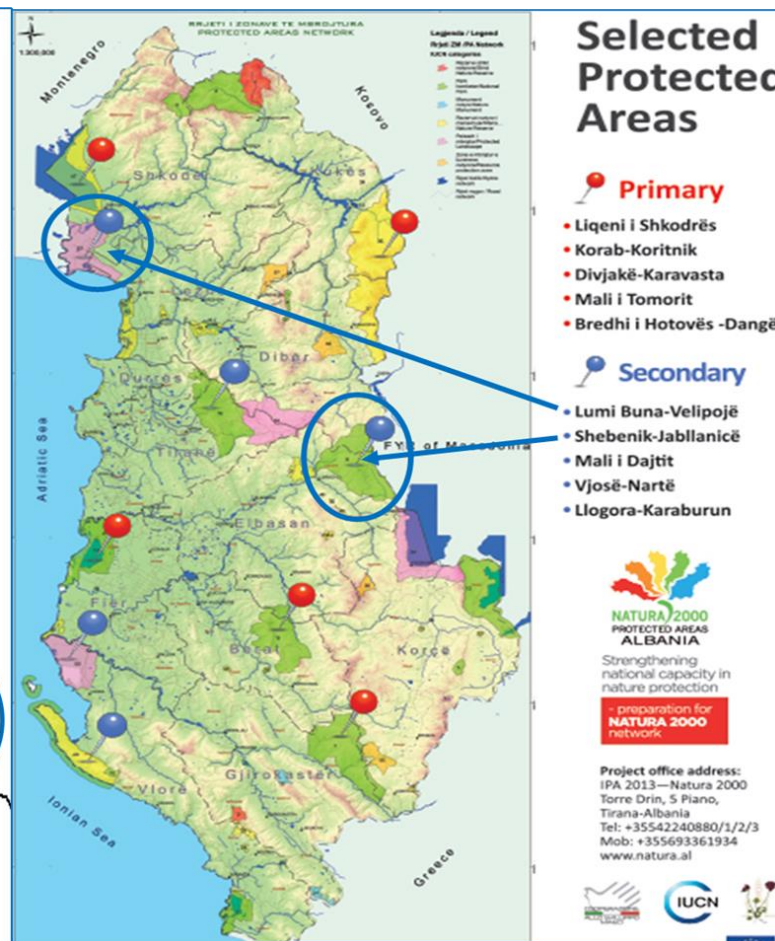
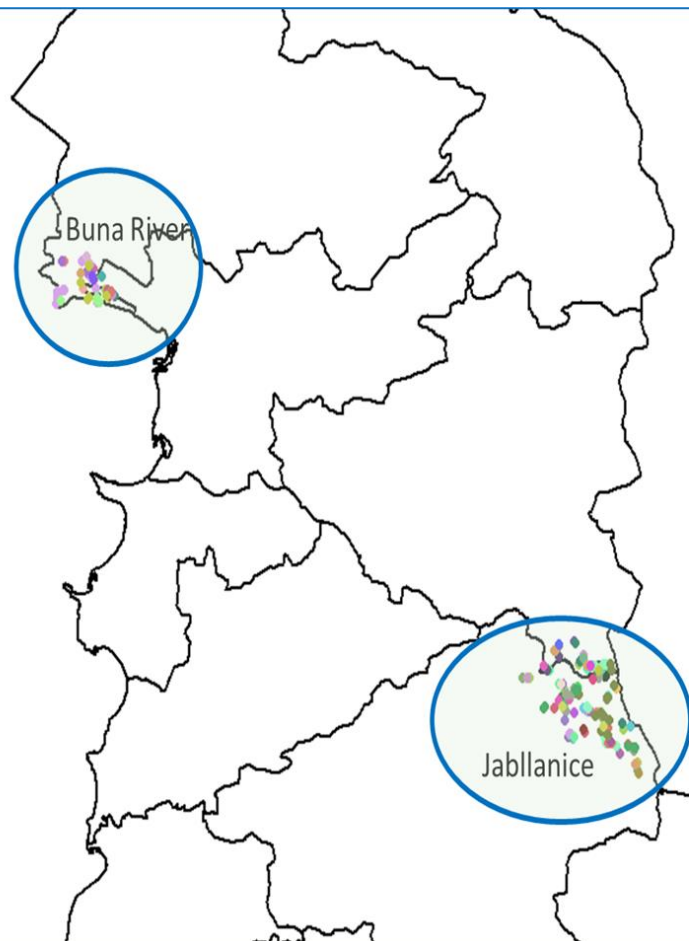
The excel file of the descriptors data of CWR-NI

The upload the database of CWR National list in EURISCO database

- We uploaded the initial database of CWR National priority taxa into the EURISCO database.
- ACCENUMB (Accession number) = **610 acc, = 130 species, = 48 genera.**
- Included in MLSSTAT (MLS status of the accession) = 158 acc
- Protected area (Lumi Bunës-Velipojë) = **198 acc, = 45 species.**
- Protected area (Shebenik-Jabllanicë) = **412 acc, = 85 species.**
- Storage = in situ (code 60 = in situ wild population)
- <https://qrgj.org/mbi-cwral/>

Buna River, Jabllanice

- Abies alba
- Aegilops geniculata
- Aegilops triuncialis
- Agrostis canina
- Allium cupani
- Allium ursinum
- Amelanchier ovalis
- Asparagus acutifolius
- Astragalus angustifolius
- Atriplex patula
- Avena barbata
- Bellis perennis
- Berberis vulgaris
- Carum carvi
- Carum heldreichii
- Carum rigidulum
- Celtis australis
- Cornus mas
- Cornus sanguinea
- Crataegus monogyna
- Dactylis glomerata
- Daucus carota
- Festuca callieri
- Festuca dalmatica
- Festuca rubra
- Festuca spadicea
- Festuca violacea
- Ficus carica
- Fragaria vesca
- Hordeum leporinum
- Juniperus communis
- Juniperus oxycedrus
- Lactuca serriola
- Lathyrus aphaca
- Lathyrus montanus
- Lathyrus niger
- Lathyrus pratensis
- Lathyrus venetus
- Lepidium graminifolium
- Linum capitatum
- Linum catharticum
- Linum elegans



Thank you for your attention !

Alban Ibraliu
Department of Agronomy Sciences
Agricultural University of Tirana
Koder Kamez 1029, Tirana, Albania
Email: albanibraliu@ubt.edu.al

