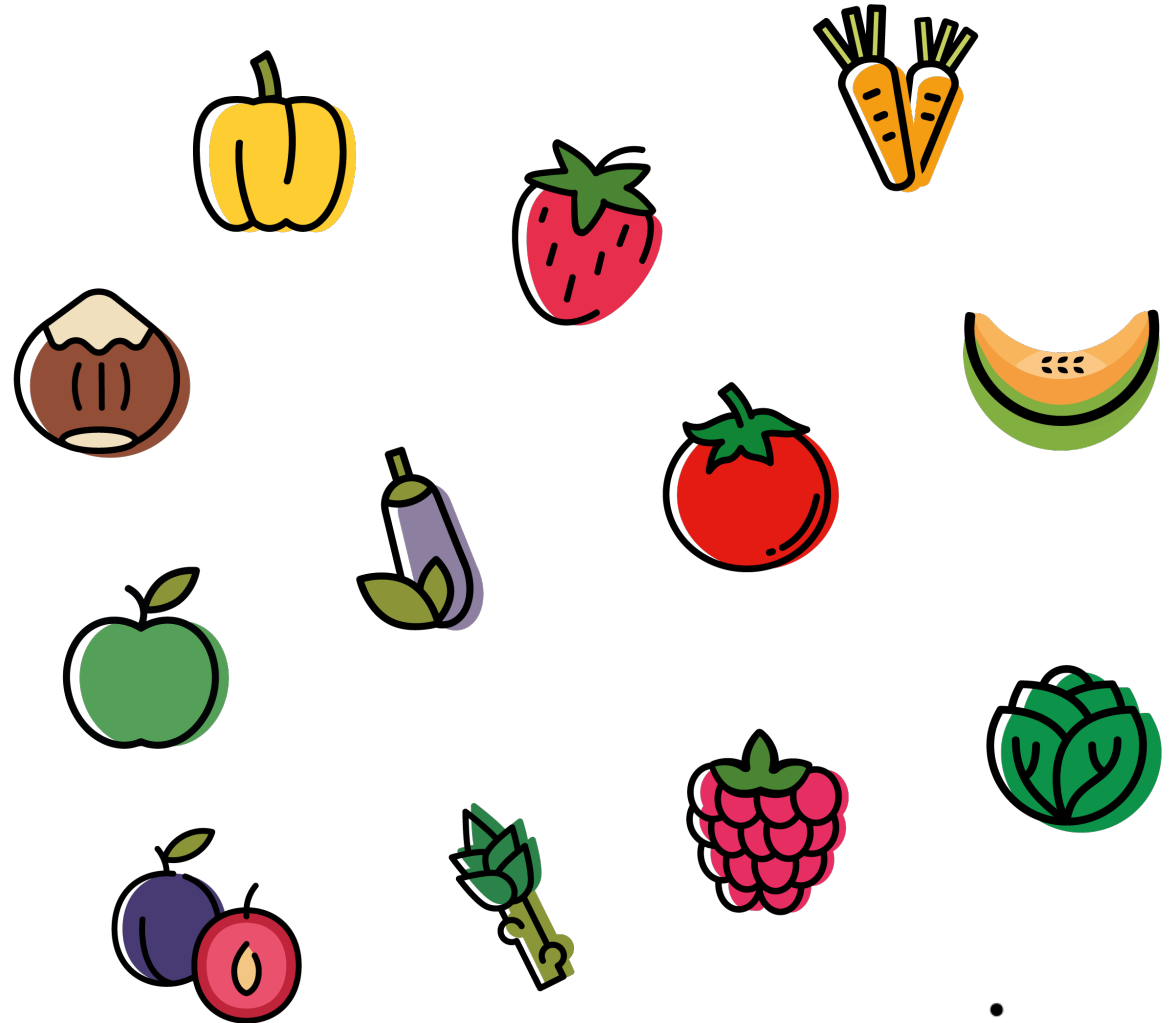


French trial station specializing in fruits and
vegetables



 3 trials stations, 10+ species worked on



invenio 



The straight of the network

IRFEL pour Innovation et Recherche
en Fruits et Légumes

French Association of fruit and
vegetable regional experimental
centers

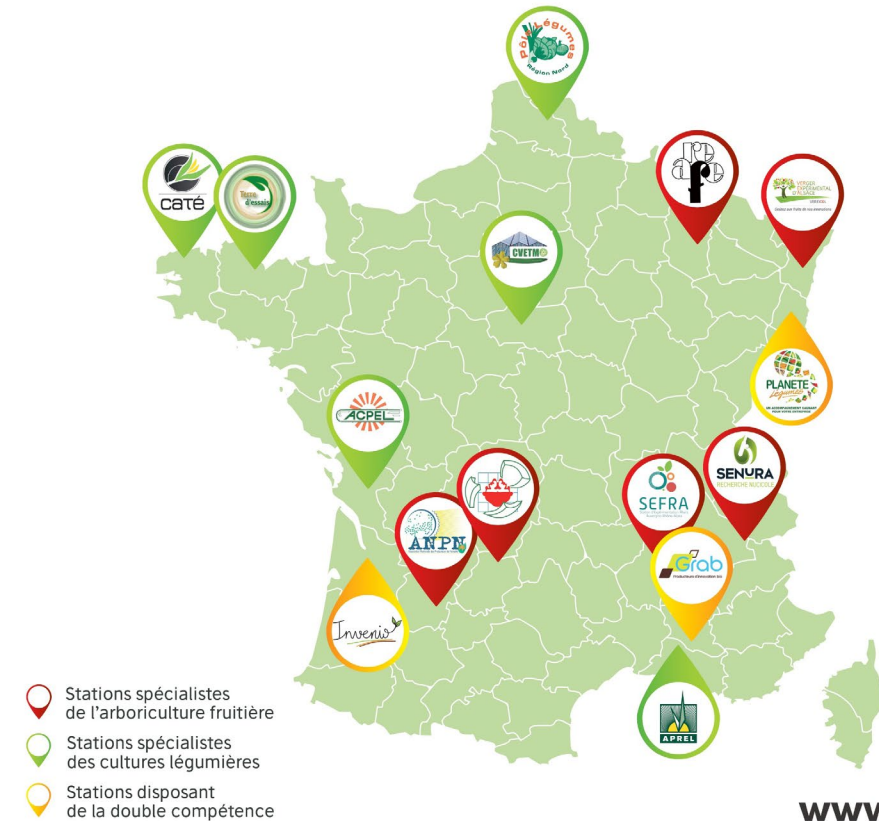
A network of skills on applied
science for the growers and fruit
and vegetable sector

15 experimental centers directly
in the production areas

Searching and finding solutions to
the technical questions of the
growers



*Un réseau de compétences en recherche appliquée
au service des producteurs et des filières fruits et légumes*



www.irfel.fr





Strawberry : support tools for breeding program / fondamentale research



Genetic Ressources

Management of the genetic resources :

For breeding purposes
For genetic preservation

Old and new variety
From late 1900's to actual
Form all the continent



Maintenance

Maintenance of the Mother
Plant commercial variety
(Invenio's and others)

Production of certified
runner tips for the
production (vitroplant)

Quality control of the
vitroplant



In vitro Lab

Production of commercial
plants

Production of plant for the
breeding program (virus
free plant : sanitation)

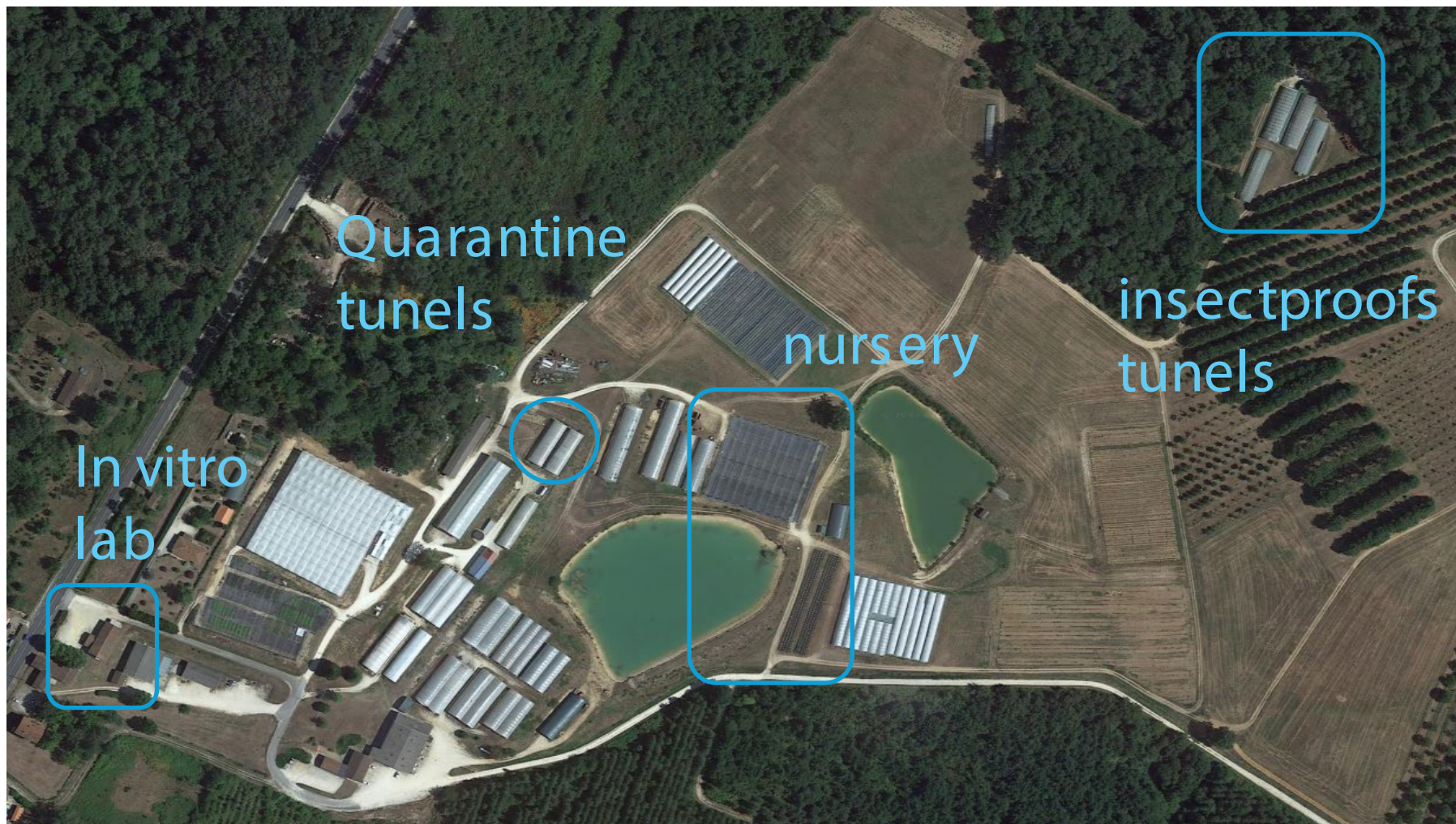
In vitro plant conservatory

In France : wild strawberry collection : INRAE / cultivated : INVENIO





Strawberry : facilities





Maintenance
Breeding material

Commercial
Maintenance

IPW

IPE

IPHS

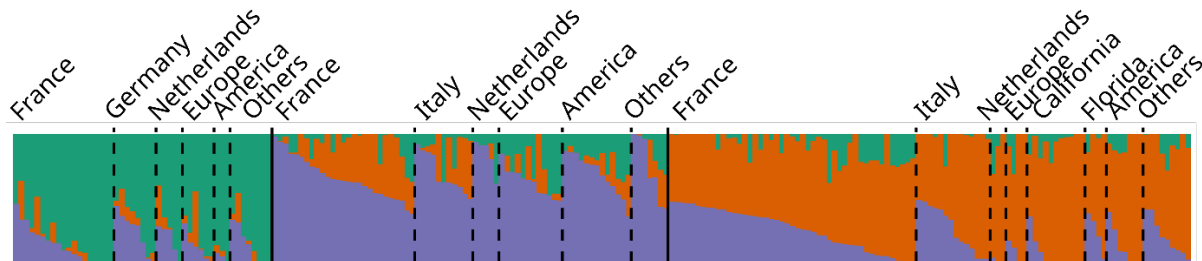
IPS

Génétiques
Ressources

Conservatory of genetic resources

Collection of more than 450 genotypes:

- 🍃 Old / commercial varieties : large diversity
- 🍃 Genotypes stock from breeding program



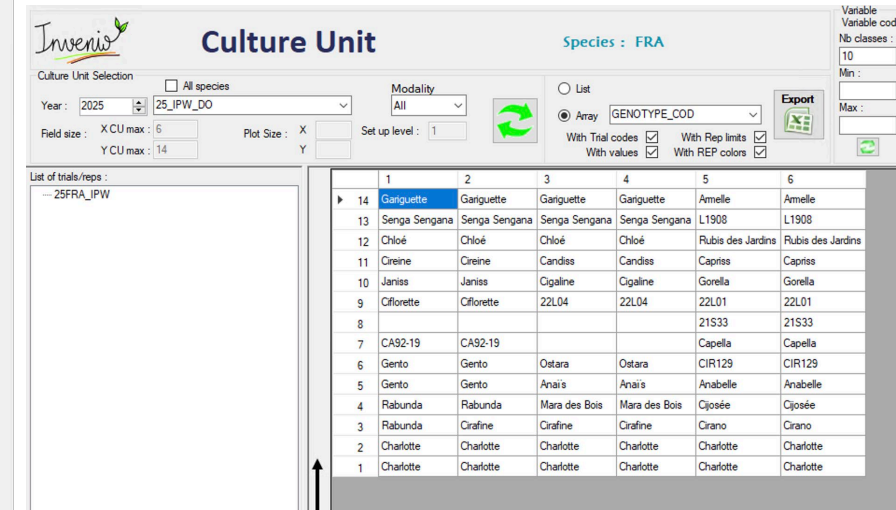
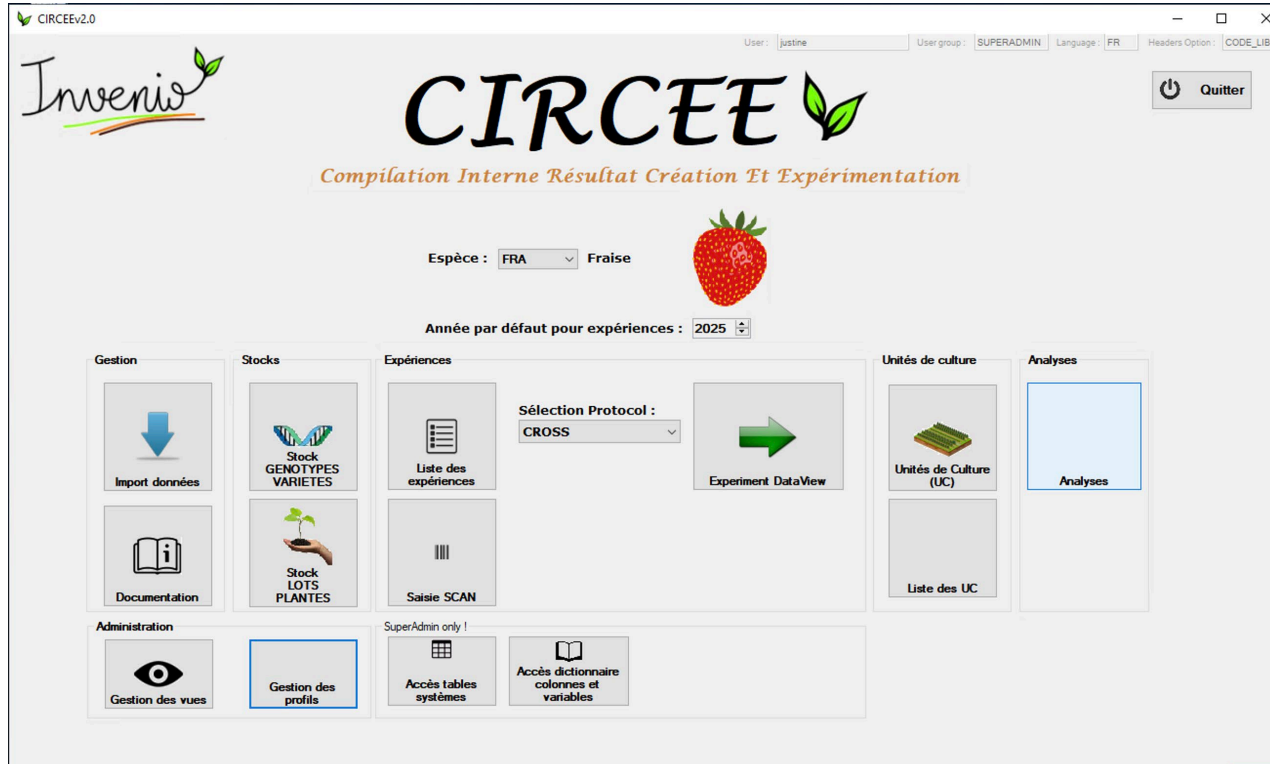


In vivo varietal maintenance

- Around 50 varieties
- Protected and unprotected commercial varieties
- Controlling and maintaining the characteristics of each variety
- Certified condition allowing to use the plants for micropropagation in our lab.



Database ...under construction



	1	2	3	4	5	6
14	Garquette	Garquette	Garquette	Garquette	Amelle	Amelle
13	Senga Sengana	Senga Sengana	Senga Sengana	Senga Sengana	L1908	L1908
12	Chloé	Chloé	Chloé	Chloé	Rubis des Jardins	Rubis des Jardins
11	Creine	Creine	Candiss	Candiss	Capriss	Capriss
10	Janiss	Janiss	Cigaline	Cigaline	Gorella	Gorella
9	Ciflorette	Ciflorette	22L04	22L04	22L01	22L01
8					21S33	21S33
7	CA92-19	CA92-19			Capella	Capella
6	Gento	Gento	Ostara	Ostara	CIR129	CIR129
5	Gento	Gento	Anais	Anais	Anabelle	Anabelle
4	Rabunda	Rabunda	Mara des Bois	Mara des Bois	Cjosée	Cjosée
3	Rabunda	Crafine	Crafine	Crafine	Crano	Crano
2	Charlotte	Charlotte	Charlotte	Charlotte	Charlotte	Charlotte
1	Charlotte	Charlotte	Charlotte	Charlotte	Charlotte	Charlotte

Not publicly accessible



Projects (more recent one)



- BREEDING VALUE : more the 200 cultivars genotype and phenotype
- SENTINELLE : (French ministry of agriculture) : 100 accessions virus tested / officially recognize as manager of national collection
- REGIONAL project (New Aquitaine region) : characterization (phenotype) of old genetic resources in new cultivation system (sol less – glass green house)

Mostly for the management of the genetic resource : self founded

Invenio bénéficie du soutien





Thank You



Région
Nouvelle-Aquitaine



UNION EUROPÉENNE
Fonds Européen Agricole
pour le Développement Rural
L'Europe investit dans les
zones rurales



UNION EUROPÉENNE
Fonds Européen de
développement régional

anr

Dordogne
PÉRIGORD
Nouvelle-Aquitaine