

KU LEUVEN

Alliance



Science for a food secure future

Cryopreservation activities in Belgium

Bart Panis

Importance of banana/plantains/cooking bananas

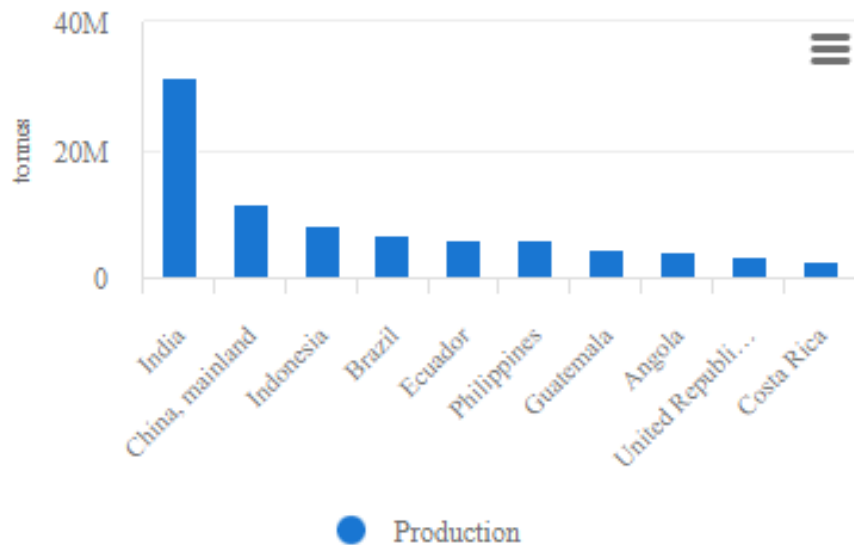


- Staple food for **400-1,000 million** people
- Produced in **>120** countries
- Banana and plantain (*Musa* spp.): Largest fruit crop in the world with an annual production of **158 million tonnes** (2020, FAO)(Apple: 87 million tonnes)
- International banana trade: yearly turnover of **~6 billion USD**

Production

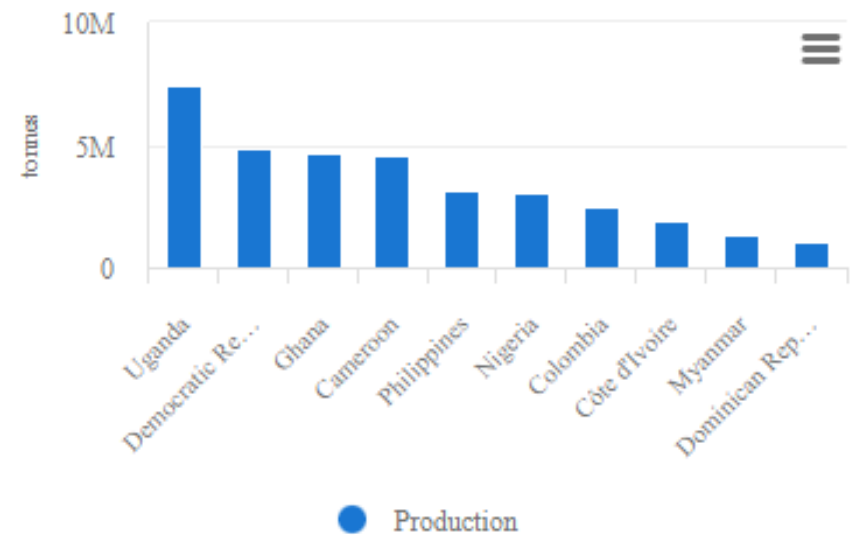
Production of Bananas: top 10 producers

2020



Production of Plantains and cooking bananas: top 10 producers

2020



Problems in banana cultivation

Diseases (viral, fungal, bacterial, nematodes, insects).

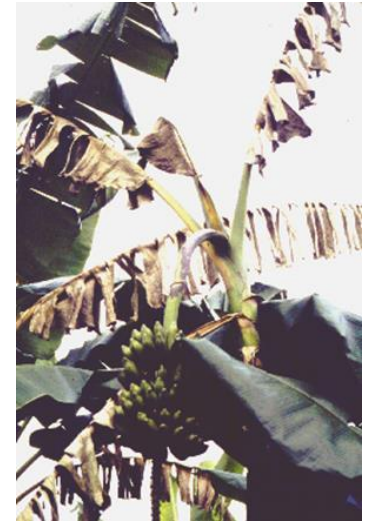
- TR4 attacking the export banana worldwide
- BBTV threatening plantain production

Stress due to climate change

- Storms
- Drought

Fruit

- Shelf life
- Fruit quality
- Yield



Where do “new cvs” or “characteristics” have to come from?

1. Forgotten cvs
2. Classical improvement
3. Modern improvement



Access to the widest possible genetic diversity is essential

The banana world collection in Leuven, Belgium

- Established in 1985 at KU Leuven, Belgium
- Food and Agriculture Organization of the UN 'in trust' collection (1994)

Cryopreserved base collection 1195 accessions



In vitro active collection 1682 accessions



Lyophilized leaf tissue collection 939 accessions



Off site black box safety back-up (IRD, France) 996 accessions

Germplasm health testing

→ FAO International Guidelines for the safe movement of *Musa* germplasm –

1989/1996
Methodologies

1/ Pre-indexing

Testing of accession lines grown in screenhouse at 3 months

Specific tests :

PCR for BBTV/CMV/BBrMV/BSVs/BanMMV

2/ Virus therapy

	CMV	BBTV	BSV	BanMMV
Meristem culture	-	+++	++	
Thermotherapy	+++			+++
Chemotherapy	+		+++	+
Electrotherapy	-		+++	
Cryotherapy	+		+++	

3/ VIC indexing

Testing of accession subset of TC plantlets grown in screenhouse at 3 and 6 months

Specific tests (knowns) :

Multiplex PCR for BBTV/CMV/BBrMV/BSVs

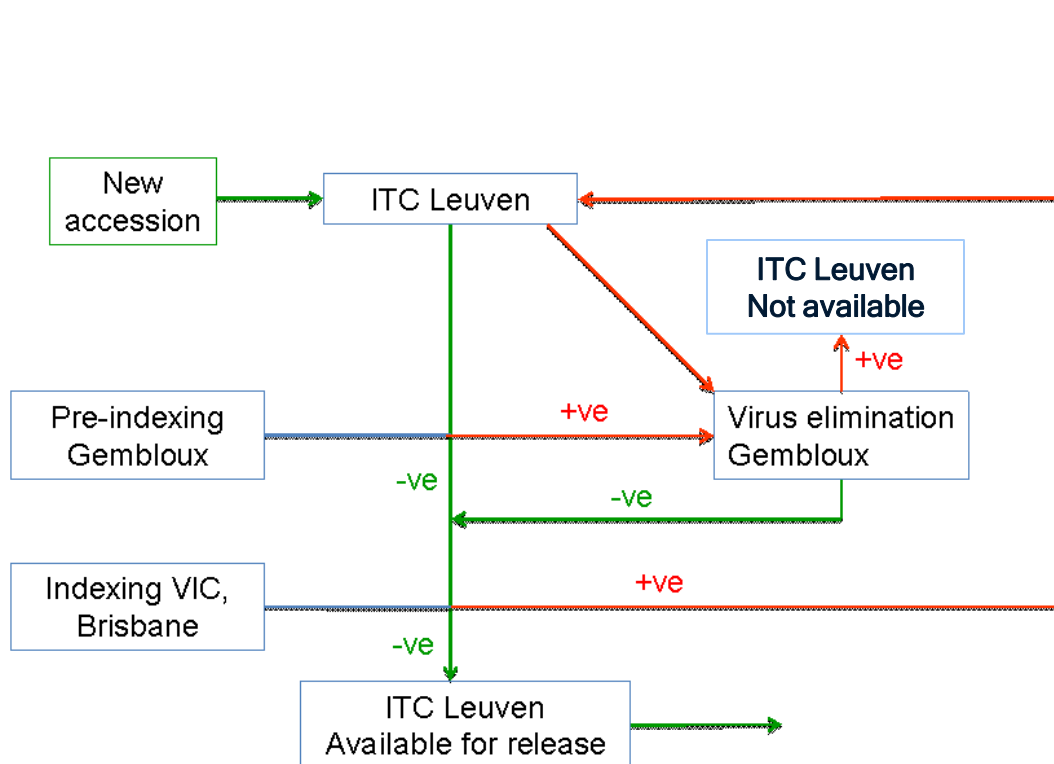
PCR for BanMMV

ISEM

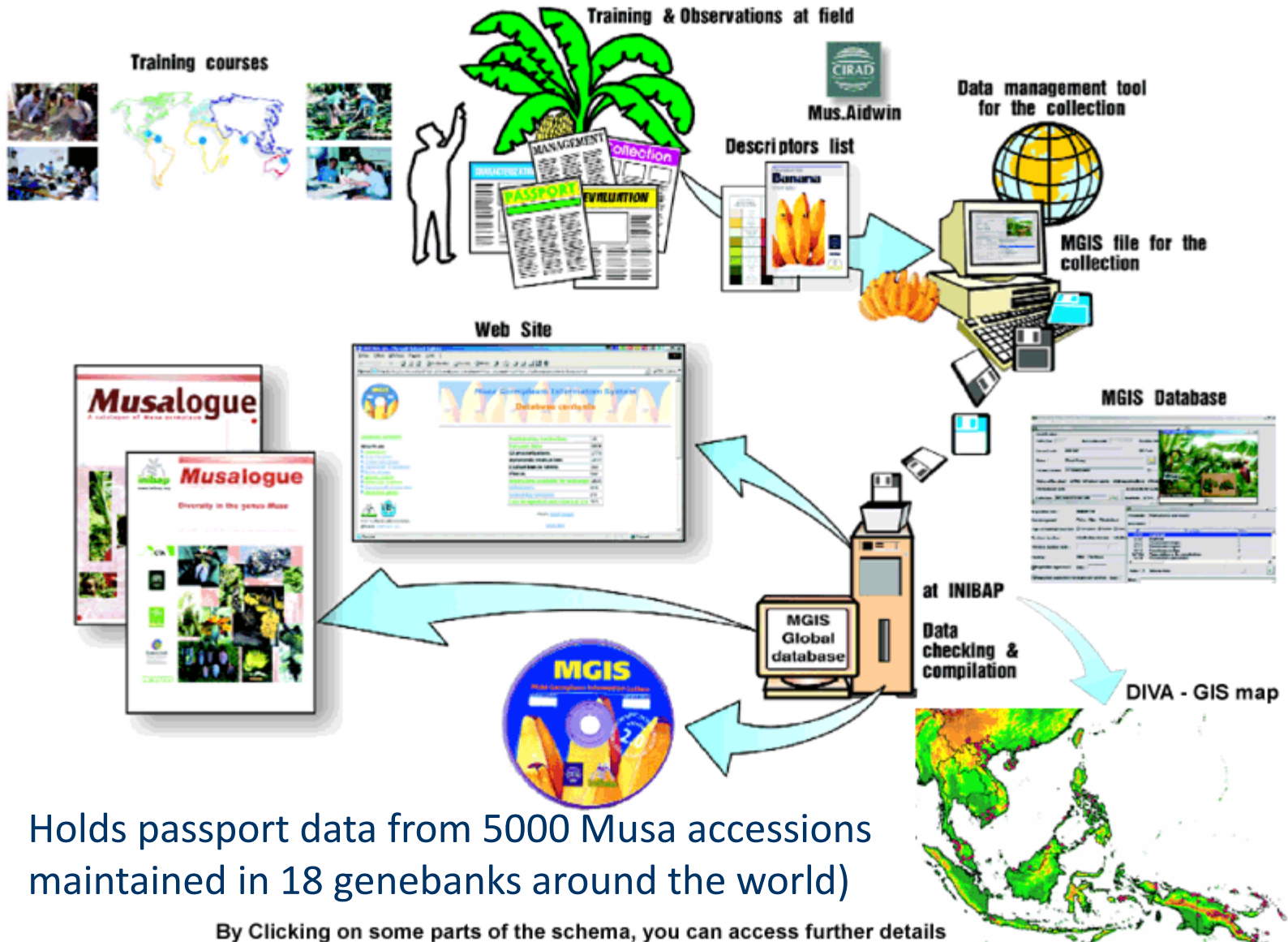
Non-specific tests (unknowns) :

Visual inspection for symptoms

Minipreps/EM

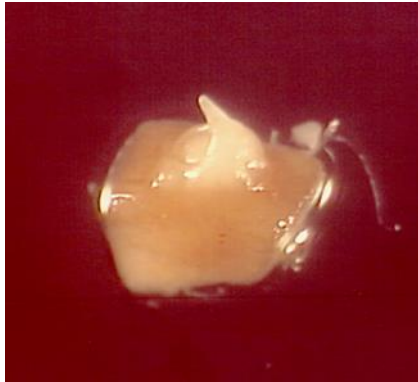
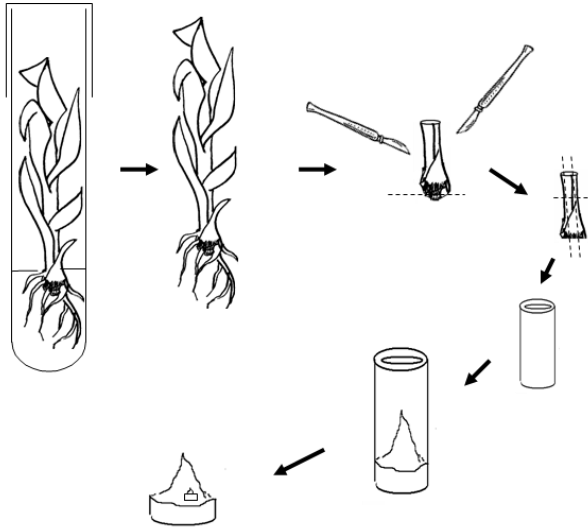


Musa Germplasm Information System (MGIS)



Holds passport data from 5000 Musa accessions maintained in 18 genebanks around the world)

By Clicking on some parts of the schema, you can access further details



Development of protocols



- **Potato** (CIP, Peru; CRPGL, Luxemburg; VIR, Russia)
- **Ulluco** (CIP, Peru)
- **Sweet potato** (CIP, Peru)
- **Chicory** (CRA, Gembloux, Belgium)
- **Strawberry** (CRA, Gembloux, Belgium)
- **Taro** (SPC, Fiji)
- **Pelargonium** (INH, Angers, France)
- **Date Palm** (Université de Sfax, Tunisia)
- **Banana** (CIRAD, France; NBPGR, India)
- **Thyme** (Univ Alicante, Spain)
- **Olive** (IFAPA, Malaga, Spain)
- **Hop** (Univ Oviedo, Spain)
- **Photinia** (CNR, Firenze, Italy; Gebze, Turkey)
- **Vitis** (CNR, Palermo, Italy, PFR, Palmerston, NZ)
- **Apple** (Fruit Tree Research Institute, Italy)
- **Cassava** (IITA, Nigeria, CIAT, Colombia)
- **Tomato** (University of Valencia, Spain)
- **Bituminaria** (University of Valencia, Spain)
- **Narcissus** (Daffodil) (University of Krakow, Poland)
- **Galanthus** (Snowdrop) (University of Krakow, Poland)
- **Lily** (PRI, the Netherlands)
- **Rose** (University of Krakow, Poland)
- **Yacon** (University of Prague, Czech Republic)
- **Coconut** (RDA, South Korea)
- **Spuce** (Slovak Academy of Science)
- **Pine** (Slovak Academy of Science)
- **Ash** (CNR, Firenze, Italy)
- **Byrsonima** (UFPA, Brazil)
- **Callerya** (INTAS, China)
- **Stevia** (KU Leuven)
- **Raspberry** (FTRI, Italy)



Belgium

partner in development

Alliance



EU

*establishing CRYopreservation Methods for
Conserving European Plant germplasm collections*



CRYMCEPT

plant cryopreservation

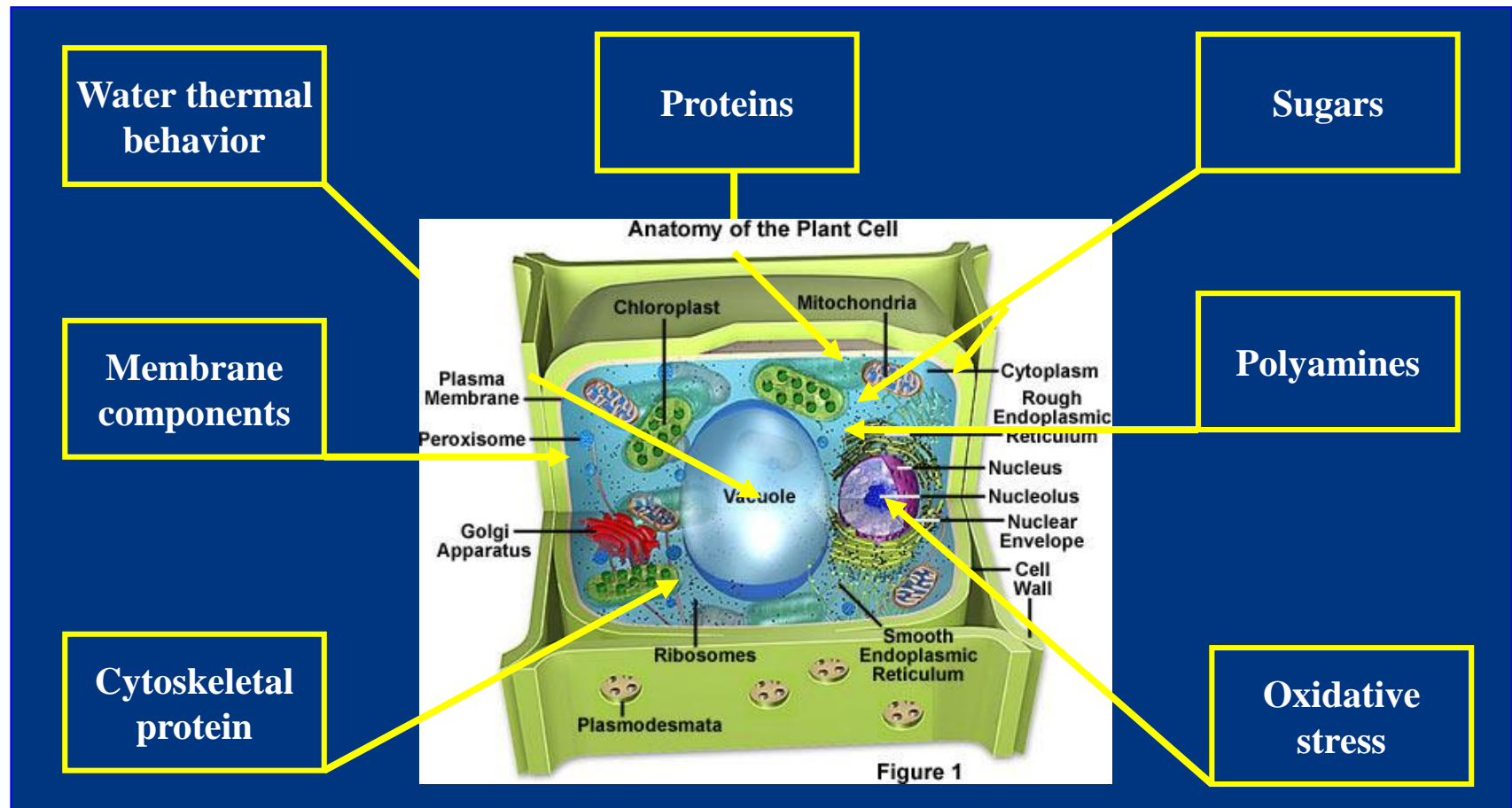
QLK5-CT-2002-01279

1 November, 2002- 31 October, 2005

Alliance



Physico-biochemical parameters related to plant cryopreservation



Crymcept workshops



Workshops on Cryopreservation in Support of the Conservation of European Plant Genetic Resources



Organized by the International Plant Genetic Resources Institute (IPGRI) (Rome, Italy) in collaboration with the partners of the CRYMCEPT project: Katholieke Universiteit Leuven, Leuven, Belgium; University of Abertay Dundee, Dundee, UK; University of Derby, Derby, UK; Institut de Recherche pour le Développement, Montpellier, France; Fruit Tree Research Institute, Rome, Italy; DSMZ-Deutsche Sammlung von Mikroorganismen und Zellkulturen GmbH, Braunschweig, Germany

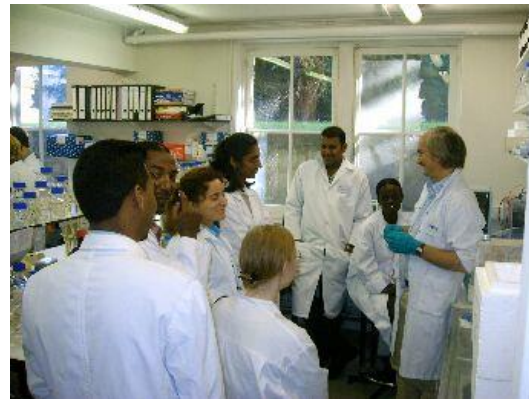


Sponsored by the European Union Project mission

Venues and dates:

The First Workshop will be hosted by the Katholieke Universiteit Leuven (Leuven, Belgium), 12–22 September 2005.

The Second Workshop will be hosted by the Institut de recherche pour le développement (Montpellier, France), 10–21 October 2005.



Alliance



Action 871: Cryopreservation of crop species in Europe

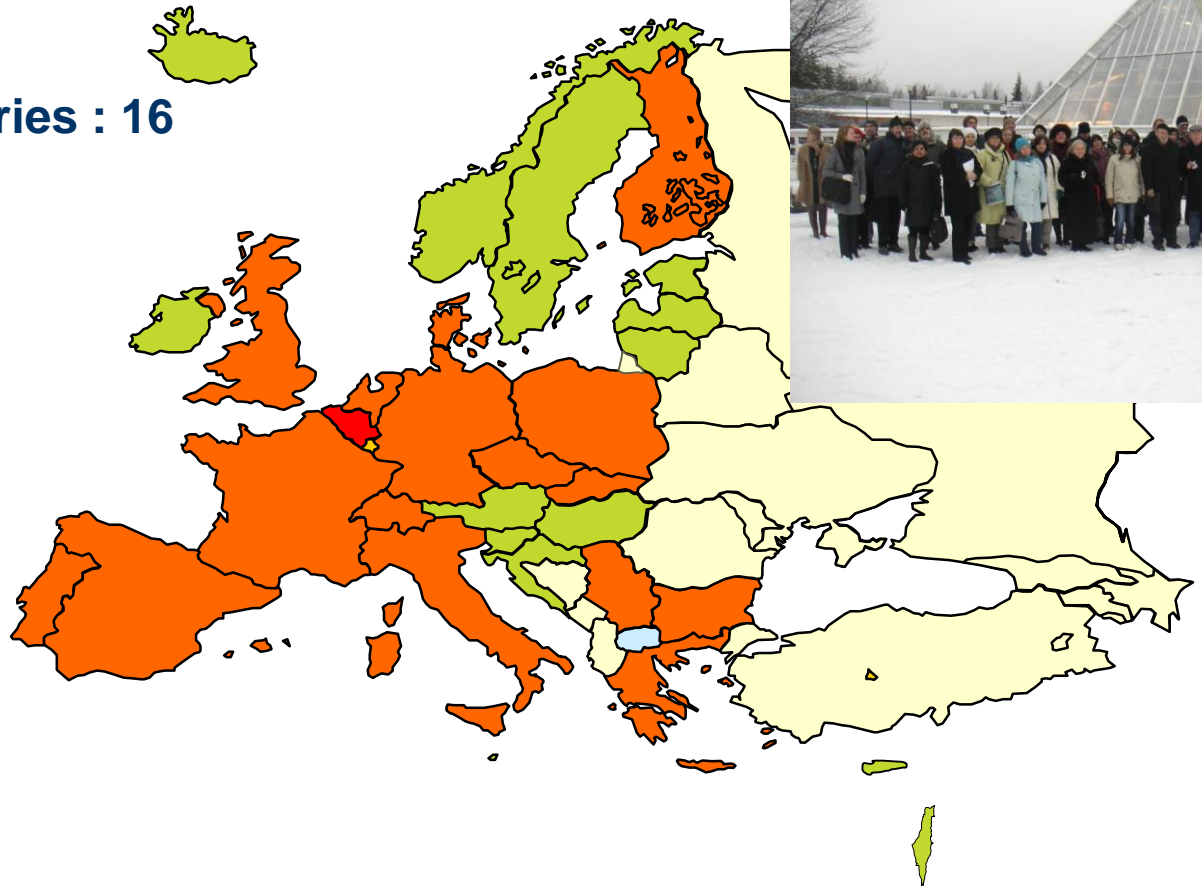


Participating Countries : 16

Chair : **BE**

BG, CZ, DK, FI, FR, DE,
IT, NL, PL, PT, CS, SK,
ES, UK,GR, LU, CH

Non-COST:
Vavoliv, Russia
New Zealand
Tunesia



Duration: 4 years

The first International Symposium on Cryopreservation in Horticultural Species was held in Leuven (5 to 8 April, 2009)



149 participants from 43 countries

Acta Horticulturae 908, 65 articles, 511 pages

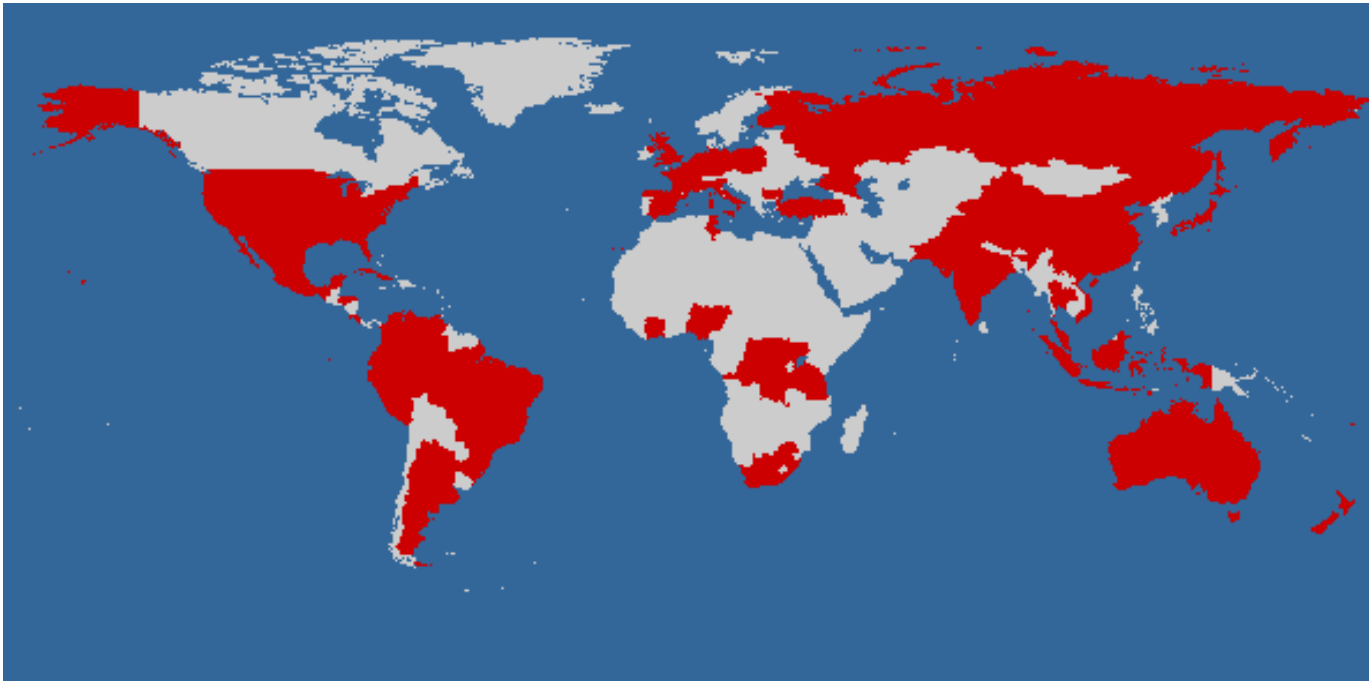


Alliance



Training on plant cryopreservation

- Over the past 25 years about 140 researchers from 44 countries were trained on plant cryopreservation techniques in Leuven.
- The length of their training ranged between 3 days and 1 year and they were financed by different sources (FWO, World Bank, EU, Development cooperation,.....).



Other Cryopreservation activities in Belgium

- Cryopreservation of azalea (ILVO)
- Cryopreservation of *Abies nordmanniana* (CRA-W)
- Cryopreservation of chicory meristems and chicory seeds (Plantenteelt, KU Leuven)
- Cryopreservation hairy root cultures of *Maesa lanceolata* and *Medicago truncatula* (U GENT)
- Cryopreservation of Stevia (Plant Physiology Lab, KU Leuven)





Thank you

www.biodiversityinternational.org

Alliance

