

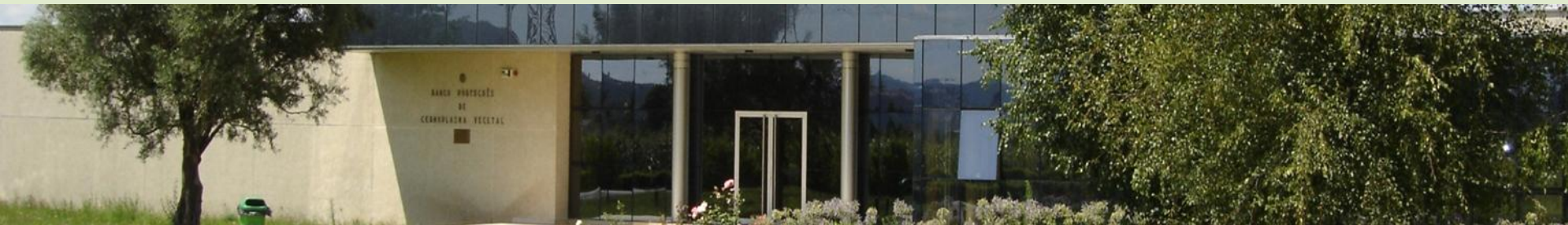


Instituto Nacional de
Investigação Agrária e
Veterinária, I.P.

MEDICINAL and AROMATIC PLANTS WORKING GROUP

ECPGR OBJECTIVES Phase IX

Ana Maria Barata



REPÚBLICA
PORTUGUESA

AGRICULTURA, FLORESTAS
E DESENVOLVIMENTO RURAL

MEDICINAL AND AROMATIC PLANTS WORKING GROUP

82 members with different expertise from 38 countries

22 Genebank curators

36 Crop specialists

18 Documentation and information specialists

14 Plant breeders

14 policy makers

4 Others

MEDICINAL AND AROMATIC PLANTS WORKING GROUP



October 2001,
During its eighth meeting ECPGR Steering Committee
it was agreed on the establishment of the Medicinal
and Aromatic Plants Working Group

The MAP Working Group met for its first time in Gozd
Martuljek, Slovenia, September 2002.



*Medicinal and Aromatic Plants
Working Group*



Conservation and characterization of oregano (*Origanum vulgare* L.) wild populations in Europe

http://archive-ecpgr.cgiar.org/archive_up_to_phase_viii/sugar_starch_fibre_crops/medicinal_plants/oregano_project.html

Samples from 51 populations ranging geographically from Portugal to Israel and from Norway to Italy were analysed

Slovenia: Dea Baričević
Portugal: Ana Maria Barata
Albania: Alban Ibraliu
Check Republic: Karel Dušek
Bulgaria: Kana Varbanova
Finland: Bertalan Galambosi
Italy: Carla Vender
Israel: Nativ Dudai
Latvia: Ieva Žukauska

Macedonia FYR: Gjoshe Stefkov
Norway: Åsmund Asdal
Slovakia: Iveta Cicová
Turkey: Ali Osman Sari
Croacia: Zlatko Satovic
Serbia: Zora Dajic Stevanovic
Spain: David Draper Munt
Greece: Paschalina Chatzopoul
Hungary: Ildikó Novak
Lituania: Jolita Radušienė

19
countries

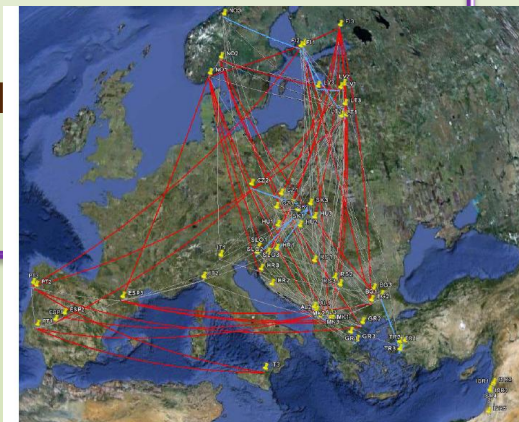


Figure 4: Representation of the genetic network. Red: set of edges that are significantly longer (physically) than would be predicted by the genetic covariance between the populations. Blue: set of edges that are significantly shorter (physically) than would be predicted by the genetic covariance between the populations. Grey: set of edges where physical distance is not significantly different from genetic covariance between the populations.

ECPGR GRANT SCHEME PROPOSALS



Initiate and coordinate the preparation of project ideas and proposals for funding from the competitive ECPGR funding scheme and/or from other sources

First call - 2014

Title of the proposal: Documentation of European *Carum carvi* accessions for long term conservation. **Not successful**

Objective

This project aims at providing preliminary results and the background information for the establishment of future regional collection(s) (according to the AEGIS concept) of *Carum carvi* L. in Europe.

Partners

| Name and Surname | Country |
|-----------------------|----------------|
| Alban Ibraliu | ALBANIA |
| Sayara Ibadullayera | AZERBEIJAN |
| Kattya Uzundzhaliyeva | BULGARIA |
| Karel Dusek | CHECK REPUBLIC |
| Pietro Fusani | ITALY |
| Asmund Asdal | NORWAY |
| Diana Batir Rasu | ROMENIA |
| Ana Maria Barata | PORTUGAL |
| Dea Baricevic | SLOVENIA |



*Medicinal and Aromatic Plants
Working Group*

ECPGR GRANT SCHEME PROPOSALS



Second Call -2015

Title of the proposal: “Inventory and update Documentation system for MAP European Conservation-MAPDOC”. **Not Successful**

Objective

To develop and agree on the standards for an inventory and survey the distribution pattern of the indigenous populations of the MAP priority species.

Harmonization of methodologies for the evaluation of natural plant populations and their habitats, based on the principle of a descriptor system.

Upgrade of an existing information system (MEDPLANT) that will enable implementation and monitoring of ex-situ and/or in-situ conservation strategies for MAP species.

Partners

| Name and Surname | Country |
|--------------------------------|----------------|
| Alban Ibraliu | ALBANIA |
| Kattya Uzundzhalieva | BULGARIA |
| Tamar Kacharava | Georgia |
| Pietro Fusani | ITALY |
| Laima Šveistytė | LITHUANIA |
| Mette Thomsen | NORWAY |
| Dea Baričević | SLOVENIA |
| Marcelino de los Mozos Pascual | SPAIN |
| Ana Maria Barata | PORTUGAL |
| Nigel Maxted | UNITED KINGDOM |



*Medicinal and Aromatic Plants
Working Group*

OTHER FUNDING OPPORTUNITIES

Projects submitted involving WG members

HORIZON 20-20 A Comprehensive Approach for the Management and Sustainable Exploitation of European Medicinal and Aromatic Plants (Acronym: SEE-MAP);

Twenty seven partners were involved in this proposal and some of them are from the MAPWG.

Proposal Coordinator: Sotirios Kampranis - University of Crete –

Project not successful

Background

MAP EUROcollection

In Europe, at least 2,000 MAP plant *taxa* are used in commercial basis, of which, two thirds, 1,200-1,300 species are native to Europe.

The countries involved in the MAPWG, have reported previously (2009), a total of 23 480 accessions preserved in *ex situ* conditions and from those, 4 624 from the ten priority species,

The priority species have been models and for which species-specific descriptor were proposed and are available in the webpage

Achillea millefolium agg.; Artemisia absinthium; Carum carvi;
Gentiana lutea; Hypericum perforatum; Mentha piperita and M.
spicata; Melissa officinalis; Origanum spp.; Salvia officinalis;
Thymus vulgaris and T. serpyllum .

MAP EUROcollection

Justification



The European Collection (<http://www.ecpgr.cgiar.org/aegis/european-collection/>) with a total of 28 686 European Accessions, only referred 82 accessions as MAP species

So, the major task consists on the identification of eligible MAP AEGIS candidate accessions, within each national inventory updated and for the priority species

Expected Impact

This activity will identify the MAP accessions to include in the European Collection. Results will be used to enlarge the European collection and reproduce the methodology for other MAP species and, relevant to other crops in ECPGR Working Groups.

ACCESSIONS PER National Inventory

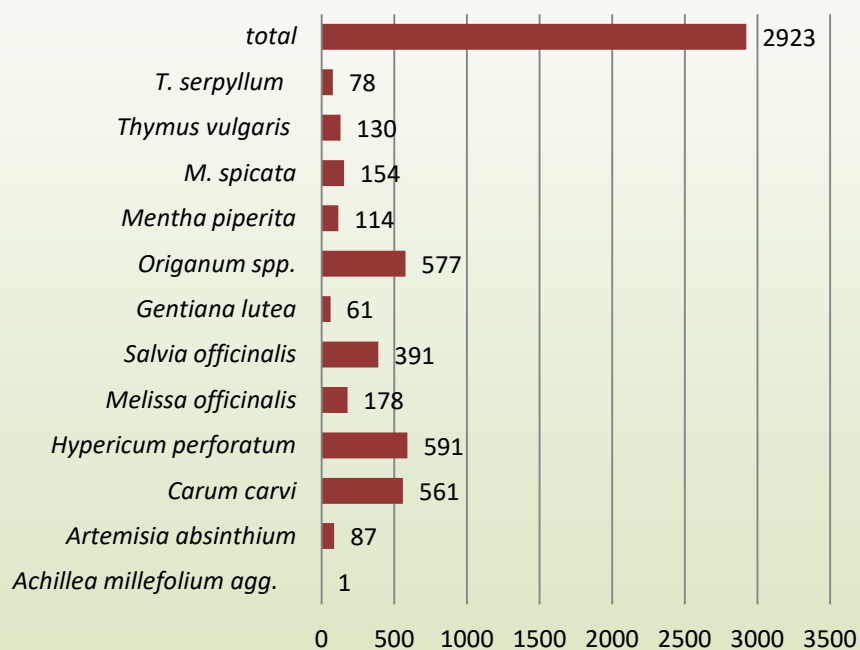


| National Inventory | Accessions | Percentage | Latest update * |
|------------------------------|------------|------------|-----------------|
| GBR (United Kingdom) | 821524 | 42.23% | 21-04-2017 |
| RUS (Russian Federation) | 200717 | 10.32% | 21-04-2017 |
| DEU (Germany) | 174362 | 8.96% | 21-04-2017 |
| UKR (Ukraine) | 94025 | 4.83% | 09-04-2013 |
| ESP (Spain) | 76984 | 3.96% | 06-07-2015 |
| POL (Poland) | 69418 | 3.57% | 21-04-2017 |
| BGR (Bulgaria) | 65877 | 3.39% | 21-04-2017 |
| CZE (Czech Republic) | 55022 | 2.83% | 21-04-2017 |
| HUN (Hungary) | 4675 | 2.40% | 26-06-2009 |
| ROU (Romania) | 46064 | 2.37% | 21-04-2017 |
| ITA (Italy) | 45185 | 2.32% | 21-04-2017 |
| CHE (Switzerland) | 39906 | 2.05% | 03-08-2015 |
| NGB (Nordic Countries) | 34467 | 1.77% | 28-02-2017 |
| ISR (Israel) | 26464 | 1.36% | 08-06-2014 |
| NLD (Netherlands) | 25887 | 1.33% | 21-04-2017 |
| SVK (Slovakia) | 17043 | 0.88% | 26-08-2016 |
| TUR (Turkey) | 12996 | 0.67% | 26-08-2008 |
| PRT (Portugal) | 12193 | 0.63% | 29-03-2010 |
| AUT (Austria) | 11964 | 0.61% | 27-02-2017 |
| AZE (Azerbaijan) | 11898 | 0.61% | 21-04-2017 |
| BEL (Belgium) | 10501 | 0.54% | 29-04-2013 |
| GRC (Greece) | 6272 | 0.32% | 23-05-2016 |
| ARM (Armenia) | 5891 | 0.30% | 21-04-2017 |
| SRB (Serbia) | 5475 | 0.28% | 05-07-2012 |
| FRA (France) | 5078 | 0.26% | 30-05-2016 |
| ALB (Albania) | 4252 | 0.22% | 21-04-2017 |
| HRV (Croatia) | 3423 | 0.18% | 21-04-2017 |
| EST (Estonia) | 2948 | 0.15% | 07-03-2017 |
| LVA (Latvia) | 2494 | 0.13% | 10-06-2016 |
| MKD (Macedonia FYR) | 2158 | 0.11% | 02-02-2010 |
| SVN (Slovenia) | 1776 | 0.09% | 15-07-2008 |
| LTU (Lithuania) | 1681 | 0.09% | 03-11-2008 |
| IRL (Ireland) | 1421 | 0.07% | 08-07-2011 |
| MDA (Moldova) | 1211 | 0.06% | 13-12-2012 |
| CYP (Cyprus) | 631 | 0.03% | 21-03-2012 |
| GEO (Georgia) | 440 | 0.02% | 31-10-2008 |
| BIH (Bosnia and Herzegovina) | 434 | 0.02% | 23-07-2012 |
| MNE (Montenegro) | 356 | 0.02% | 30-01-2013 |
| BLR (Belarus) | 203 | 0.01% | 14-06-2012 |

AEGIS ACCESSIONS PER National Inventory

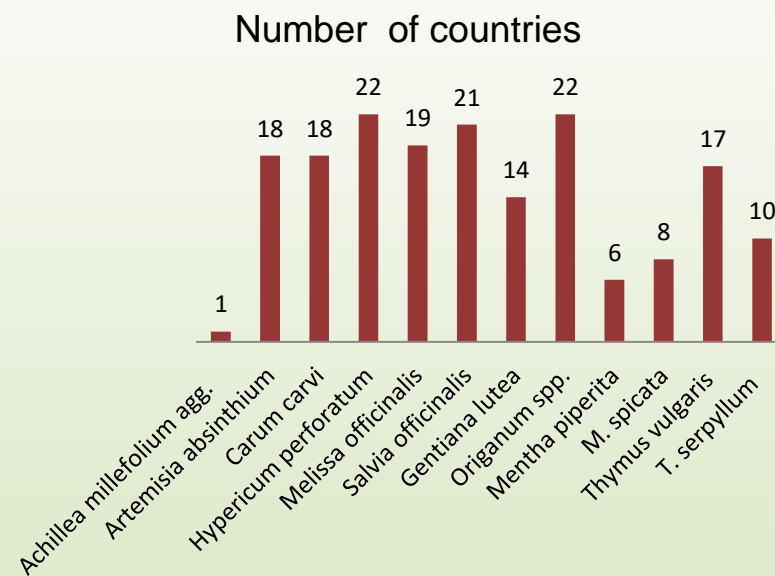
| National Inventory | Accessions | Percentage |
|------------------------|----------------|---------------|
| DEU (Germany) | 7904 | 0.41% |
| NLD (Netherlands) | 5853 | 0.30% |
| CHE (Switzerland) | 4838 | 0.25% |
| NGB (Nordic Countries) | 3708 | 0.19% |
| GBR (United Kingdom) | 1659 | 0.09% |
| CZE (Czech Republic) | 1285 | 0.07% |
| POL (Poland) | 303 | 0.02% |
| SVK (Slovakia) | 299 | 0.02% |
| BGR (Bulgaria) | 261 | 0.01% |
| ROU (Romania) | 194 | 0.01% |
| HRV (Croatia) | 90 | 0.00% |
| EST (Estonia) | 89 | 0.00% |
| LVA (Latvia) | 21 | 0.00% |
| ALB (Albania) | 8 | 0.00% |
| not in AEGIS | 1918879 | 98.64% |

Number of accessions by priority MAP species in EURISCO



EURISCO (24.04.2017)

Number of Countries with MAP priority species in EURISCO



MAP EUROcollection



Participants from

| | | |
|---------|-----------|----------|
| Czechia | Latvia | Norway |
| Hungary | Lithuania | Portugal |
| Italy | Romania | Slovenia |

During the meeting in April 2017, in Braga, besides presenting updates of their national collections:

- ❖ Discussed and agreed criteria for inclusion of accessions in the (AEGIS) **European Collection**
- ❖ Revised the crop-specific standards to use for orthodox seeds as part of the **AEGIS Quality System**



*Medicinal and Aromatic Plants
Working Group*

MAP EUROcollection



- ❖ MAP activity also allowed discussion and proposals to use the remaining available funds from the Activity budget
- ❖ Activity partners drafted a workplan for multiplication of candidate AEGIS accessions
- ❖ Final decisions will be taken until the end of this year, by the members

In Conclusion



- ✓ **Information in EURISCO** - Available Information
- Information Quality
- ✓ **AEGIS** – European Collection
- ✓ **Implementation of quality system**
- ✓ **Meeting the users' needs**, the MAP WG tries to maximize the use of the collections.
 - Access to the information
- ✓ **Complementary strategies *ex situ* and *in situ* conservation**

ECPGR Phase IX

- ? Major gaps/constraints in fulfillment the objectives
- ? Recommendations to enhance opportunities

WG members

Interest of the members in the proposals

Relation to quota system



*Medicinal and Aromatic Plants
Working Group*



Instituto Nacional de
Investigação Agrária e
Veterinária, I.P.

THANK YOU VERY MUCH FOR YOUR ATTENTION



REPÚBLICA
PORTUGUESA

AGRICULTURA, FLORESTAS
E DESENVOLVIMENTO RURAL