

# C&E Data in Eurisco

October 17<sup>th</sup>, 2017 – ECPGR Networking Meeting, Ljubljana  
Theo van Hintum



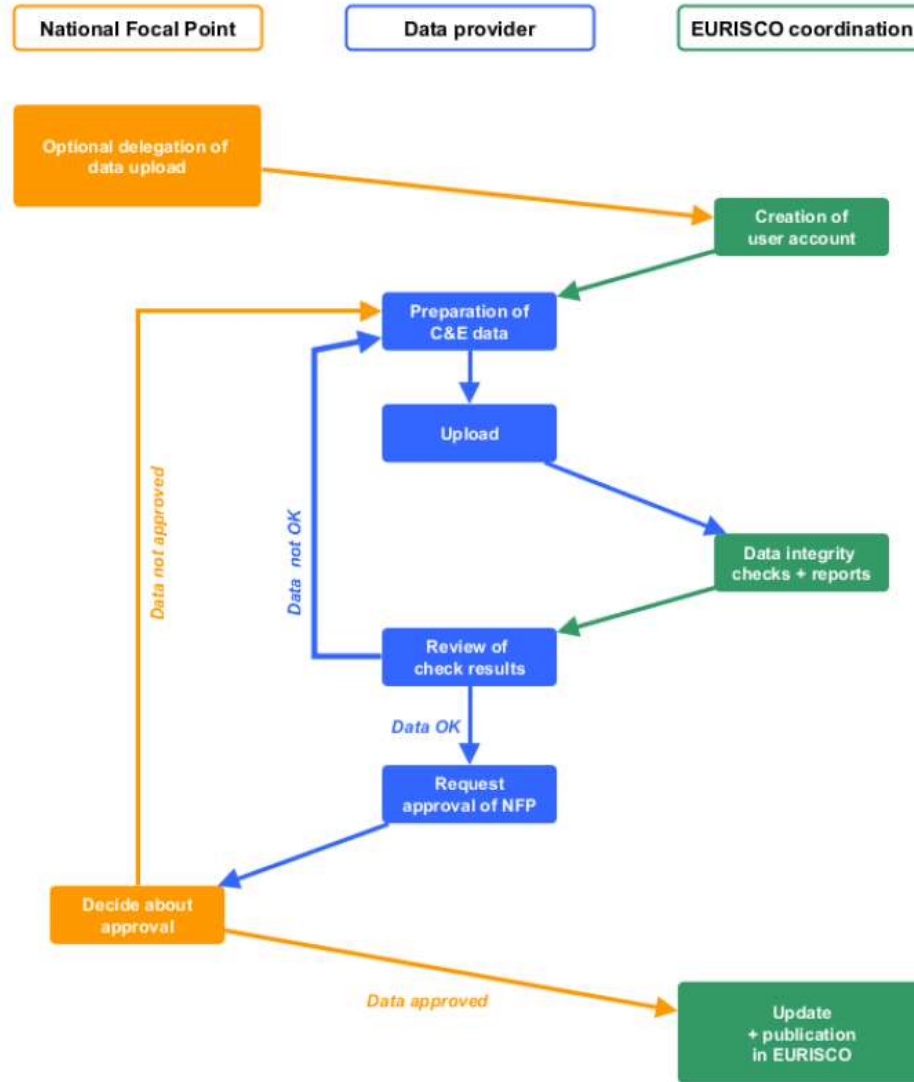
# C&E Data in Eurisco

- EURISCO = European Search Catalogue for Plant Genetic Resource
  - active since 2003
  - hosted by IPK
  - EURISICO National Focal Points upload passport data from National Inventory
    - contains passport data of PGR in the country
  - now 43 NI's , 400 institutes, 1.9 million accessions
    - data are shared with GeneSys
    - best organised regional PGR data set

# C&E Data in Eurisco

- new: phenotypic data can be uploaded to EURISCO
  - know as C&E data in genebank community
  - by National Focal Points (NFP) and anyone delegated by NFP
    - reduce distance between uploader and EURISCO
  - only phenotypic data on accessions in EURISCO
  - phenotypic data have to follow strict format rules
    - well defined – Excel templates available (no rocket science)
    - score – trait/method – experiment – dataset
  - upload mechanism will check integrity and report mistakes
  - permission of NFP is required before inclusion in EURISCO

# C&E Data in Eurisco



# C&E Data in Eurisco

- current set up is still a prototype
  - so far no controlled vocabulary or ontology for traits
    - difficult to find the trait you are looking for
    - 'plant height'; 'plant length'; 'growth height'; 'length at maturity', etc.
  - data presented per experiment
    - difficult to combine over experiments
    - 'in cm. on clay soil in Norway'; 'on 1-9 scale in Italy'

# C&E Data in Eurisco

- first step: get sufficient data
  - stimulate where possible inclusion of phenotypic data in EURISCO
    - it's no rocket science
- next steps: crop specific
  - create ontology and map all available traits on it
  - create 'summary sets' for most important and easy traits
    - one score per trait per accessions
    - 'yellow flower'; 'high malting quality'
- next steps: EURISCO
  - improve search and visualisation interface

# Thank you for your attention !

