

# C&E data templates

## Presentation & discussion

EURISCO training workshop, 19<sup>th</sup> to 21<sup>st</sup> May 2015, Tirana, Albania

Stephan Weise  
21 May 2015



# BACKGROUND

# C&E data I

- Currently not available in EURISCO
- Of high importance to users of PGR data
  - Determine value of germplasm for breeding and research
- Difficult to handle due to lots of “standards”
  - Different descriptor names/synonyms
  - Different rating scales
    - Nominal, ordinal, metric scale
  - Different amounts of meta information
    - When, where, how, by whom?
    - Experiment set-up, treatment etc.

# C&E data II

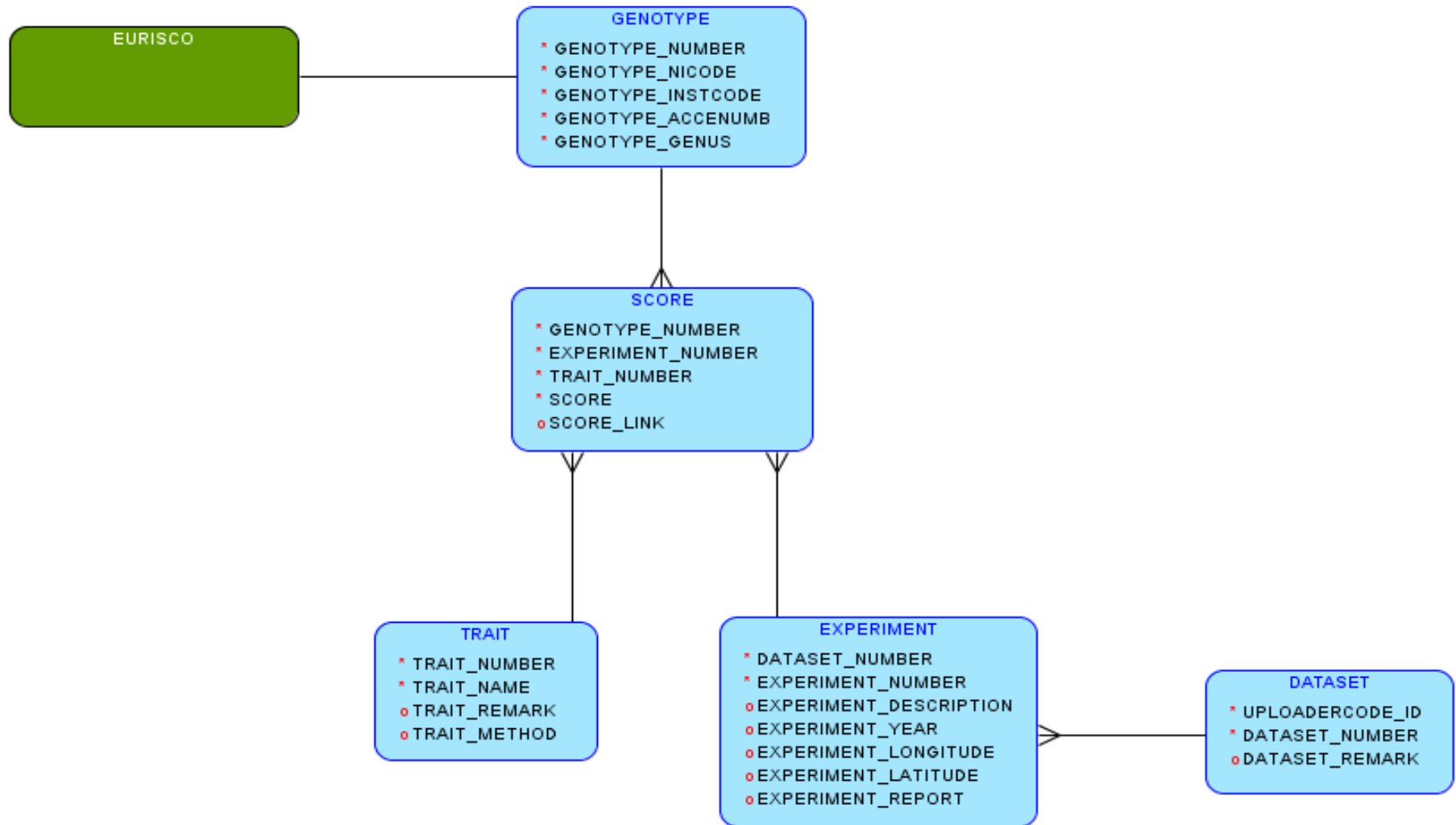
- Discussed in detail in previous years
- Suitable proposal compiled by the ECPGR Doc&Info Network in 2009
  - As simple as possible
  - As few fields as possible
    - “minimum consensus”
- D&I meeting 2014
  - Pragmatic approach:
    - No standardisation of trait, scale or experimental design
    - Only standardisation of exchange format (as simple as possible)
    - Import of existing data as-is → reach critical mass
    - Use proposal of 2009 (+ small adjustments)

# DATA MODEL

# Data model for C&E data I

- Five components
  - GENOTYPE
    - Identified by EURISCO descriptors
  - DATASET
    - May comprise different experiments
  - EXPERIMENT
    - Multiple genotypes are scored for different traits
  - TRAIT
    - Characteristic feature to be scored
  - SCORE
    - Value of a trait for a genotype

# Data model for C&E data II



# TEMPLATES



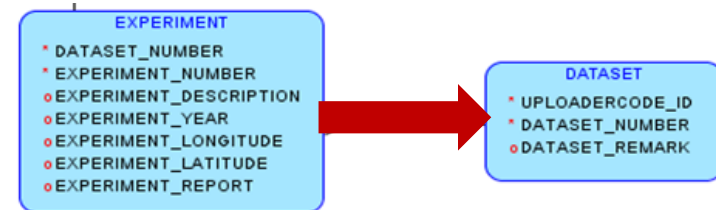
# DATASET

- Enables to upload multiple experiments at once
- Fields:
  - **UPLOADERCODE\***:
    - ID of registered authorised data provider
    - Provided by EURISCO
  - **DATASET\_NUMBER\***:
    - To link experiments with datasets
    - Unique and persistent for the data provider
  - **DATASET\_REMARK**:
    - General remark for all scores in the dataset

UPLOADERCODE	DATASET_NUMBER	DATASET_REMARK
deu_uploader01	1	This dataset contains forage grass accessions.
...	...	...
...	...	...

# EXPERIMENT I

- Meta data helping to interpret C&E data
  - Experiment set-up
  - Weather conditions
  - Soil conditions
  - Experiment location
  - ...
- Fields:
  - **DATASET\_NUMBER\***:
    - Reference of the dataset
  - **EXPERIMENT\_NUMBER\***:
    - To link scores with experiments
    - Unique and persistent for the data provider



# EXPERIMENT II

- Fields (cont.):
  - EXPERIMENT\_DESCRIPTION:
    - Brief English description
    - Information necessary for interpreting the scores, e.g. set-up
  - EXPERIMENT\_YEAR:
    - Year in which the experiment was performed
  - EXPERIMENT\_LONGITUDE:
    - Longitude of experimental site
  - EXPERIMENT\_LATITUDE:
    - Latitude of experimental site
  - EXPERIMENT\_REPORT:
    - Reference to a report
      - Either report file
      - Or report URL

# EXPERIMENT III

DATASET_NUMBER	EXPERIMENT_NUMBER	EXPERIMENT_DESCRIPTION	EXPERIMENT_YEAR	EXPERIMENT_LONGITUDE	EXPERIMENT_LATITUDE	EXPERIMENT_REPORT
1	1	Characterisation data of Lolium perenne	1999	11.278414	51.826059	<a href="#">http://...</a>
1	2	Characterisation data of Lolium perenne	2000	11.278414	51.826059	<a href="#">http://...</a>
1	3	Characterisation data of Lolium perenne	2001	11.278414	51.826059	<a href="#">http://...</a>
1	4	Evaluation data of Lolium perenne (4 replications per accession)	2002	11.278414	51.826059	<a href="#">http://...</a>
..	..	..	..	..	..	..

# TRAIT I

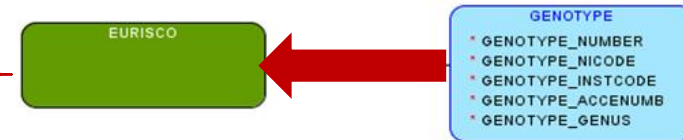
- Describe phenotypic traits and the methods used for scoring
- Fields:
  - **TRAIT\_NUMBER\***:
    - Unique, temporary number of the trait in the dataset
  - **TRAIT\_NAME\***:
    - English name of the trait
  - **TRAIT\_REMARK**:
    - General remark helping to interpret the trait
  - **TRAIT\_METHOD**:
    - English description of the used method + scale

# TRAIT II

TRAIT_NUMBER	TRAIT_NAME	TRAIT_REMARK	TRAIT_METHOD
1	Sowing date	...	Date
2	Emerging date	...	Date
3	Growing before winter	...	Rating value from 1 (min) – 9 (max)
4	Stem height min	In flowering time, the shortest plant	Measurement [cm]
...	...	...	...

# GENOTYPE I

- All accessions for which C&E data will be uploaded
- Fields:
  - **GENOTYPE\_NUMBER\***:
    - Unique, temporary number of the genotype in the dataset
  - **GENOTYPE\_NICODE\***:
    - National Inventory code from EURISCO
  - **GENOTYPE\_INSTCODE\***:
    - Holding institute code from EURISCO
  - **GENOTYPE\_ACCENUMB\***:
    - Accession number from EURISCO
  - **GENOTYPE\_GENUS\***:
    - Genus from EURISCO



# GENOTYPE II

GENOTYPE_NUMBER	GENOTYPE_NICODE	GENOTYPE_INSTCODE	GENOTYPE_ACCENUMB	GENOTYPE_GENUS
1	DEU	DEU271	GR 142	Lolium
2	DEU	DEU271	GR 476	Lolium
3	DEU	DEU271	GR 550	Lolium
4	DEU	DEU271	GR 2670	Lolium

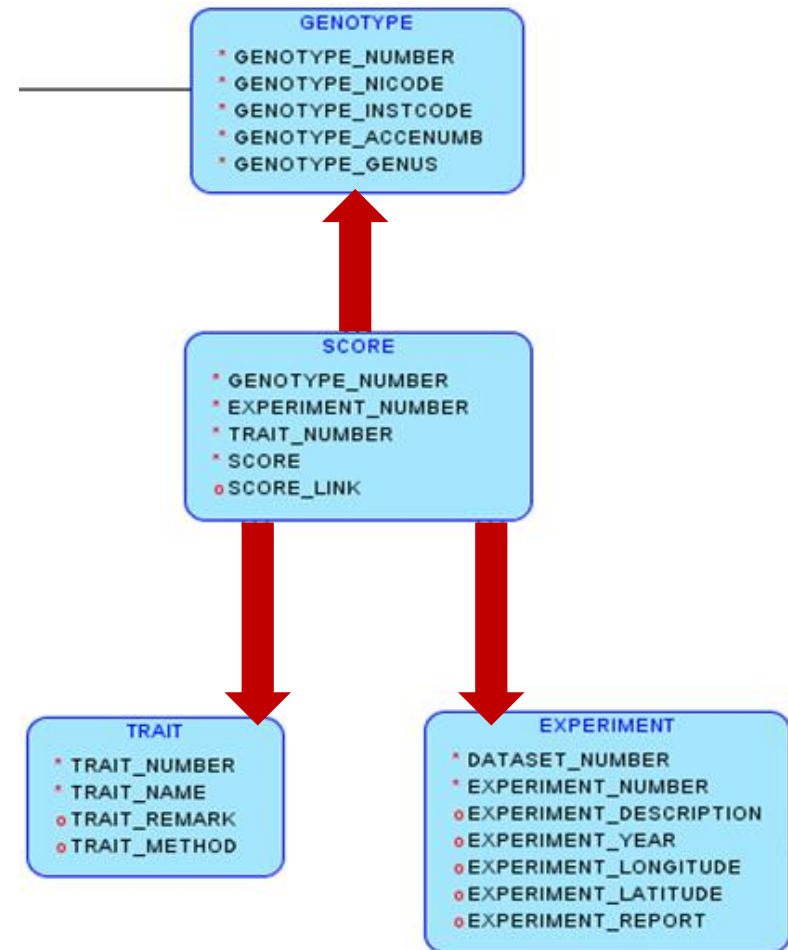


# SCORE I

- Observed phenotypic values of the accessions

- Fields:

- **GENOTYPE\_NUMBER\***:
  - Reference to a genotype
- **EXPERIMENT\_NUMBER\***:
  - Reference to an experiment
- **TRAIT\_NUMBER\***:
  - Reference to a trait
- **SCORE\***:
  - Observed score
- **SCORE\_LINK**:
  - Link to a publication on accession level



# SCORE II

GENOTYPE_NUMBER	EXPERIMENT_NUMBER	TRAIT_NUMBER	SCORE	SCORE_LINK
1	1	1	19990313	<a href="http://...">http://...</a>
1	1	3	7	<a href="http://...">http://...</a>
4	4	1	20020401	...
4	4	4	21	<a href="http://...">http://...</a>
...	...	...	...	...
...	...	...	...	...

# Putting all this together

GENOTYPE_NUMBER	GENOTYPE_NICODE	GENOTYPE_INSTCODE	GENOTYPE_ACCNUMB	GENOTYPE_GENUS
1	DEU	DEU271	GR 142	Lolium
2	DEU	DEU271	GR 476	Lolium
3	DEU	DEU271	GR 550	Lolium
4	DEU	DEU271	GR 2670	Lolium

GENOTYPE

TRAIT

TRAIT_NUMBER	TRAIT_NAME	TRAIT_REMARK	TRAIT_METHOD
1	Sowing date	...	Date
2	Emerging date	...	Date
3	Growing before winter	...	Rating value from 1 (min) – 9 (max)
4	Stem height min	In flowering time, the shortest plant	Measurement [cm]
...	...	...	...

GENOTYPE_NUMBER	EXPERIMENT_NUMBER	TRAIT_NUMBER	SCORE	SCORE_LINK
1	1	1	19990313	http://...
1	1	3	7	http://...
4	4	1	20020401	...
4	4	4	21	http://...
...	...	...	...	...
...	...	...	...	...

SCORE

DATASET_NUMBER	EXPERIMENT_NUMBER	EXPERIMENT_DESCRIPTION	EXPERIMENT_YEAR	EXPERIMENT_LONGITUDE	EXPERIMENT_LATITUDE	EXPERIMENT_REPORT
1	1	Characterisation data of Lolium perenne	1999	11.278414	51.826059	http://...
1	2	Characterisation data of Lolium perenne	2000	11.278414	51.826059	http://...
1	3	Characterisation data of Lolium perenne	2001	11.278414	51.826059	http://...
1	4	Evaluation data of Lolium perenne (4 replications per accession)	2002	11.278414	51.826059	http://...
...	...	...	...	...	...	...

EXPERIMENT

UPLOADERCODE	DATASET_NUMBER	DATASET_REMARK
deu_uploader01	1	This dataset contains forage grass accessions.
...	...	...
...	...	...

DATASET

# PROCEEDING

# Proceeding for data upload

- Prerequisite:
  - Only non-confidential C&E data
  - Only data of accessions listed in EURISCO
- Impact
  - NFPs responsible for data upload
    - May nominate users for (sub) accounts
  - Descriptor HISTORIC
    - Currently under discussion
- Upload via Java tool
  - Coming soon