



Prehistoric settlement of Philippi-Dikili Tash, around 4300 BC: from grape juice to red wine

**Dr. Dimitria Malamidou,
Director of the Ephorate of Antiquities of Serres**



ECPGR Working Group *Vitis Sylvestris* Activity
«Increasing the efficiency of the conservation of *Vitis dylvestris* genetic resousces in Europe»
Αρχαιολογικό Μουσείο Καβάλας, Τρίτη 10 Οκτωβρίου 2023



●
ΝΤΙΚΙΛΙ ΤΑΣ
Dikili Tash

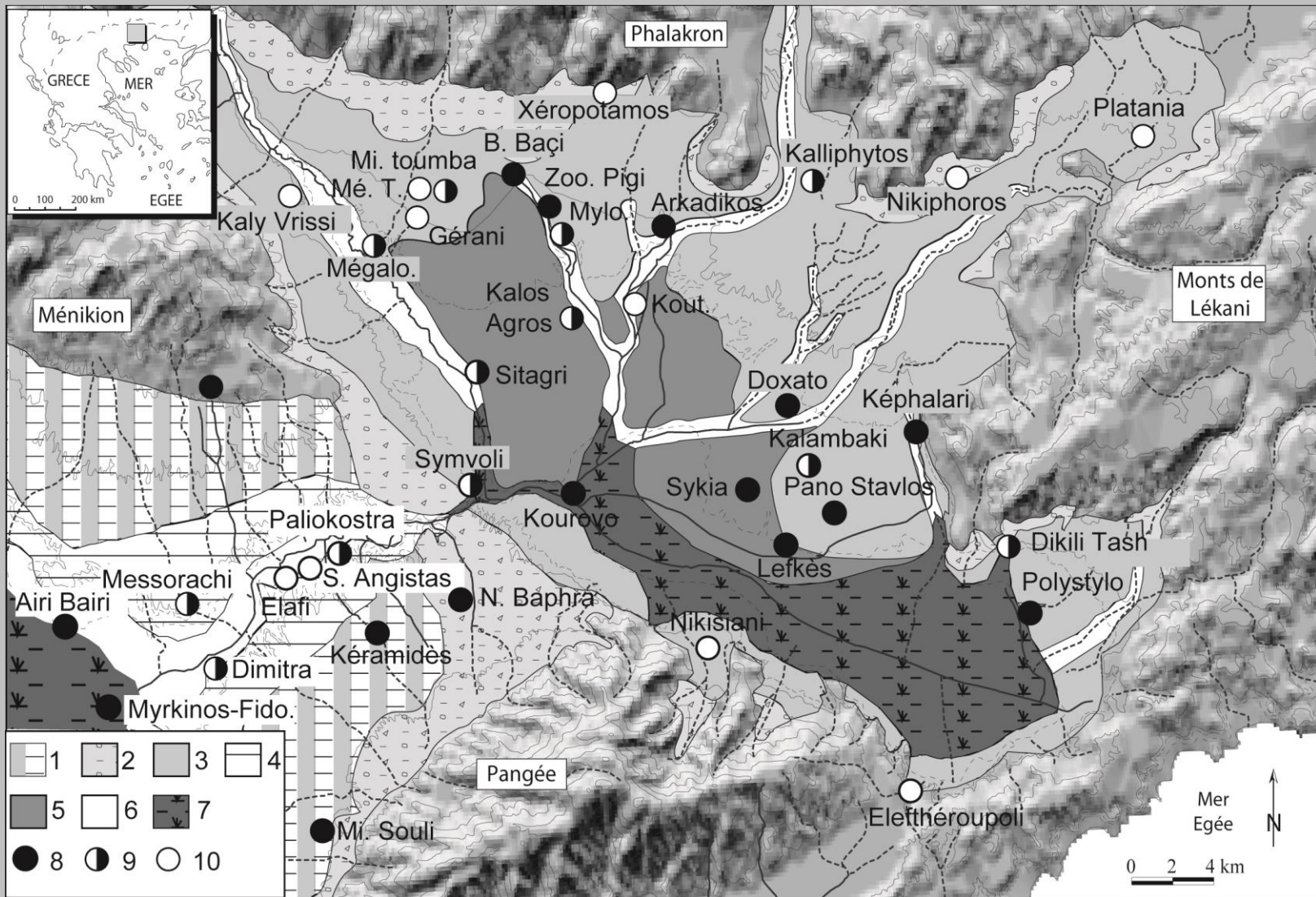


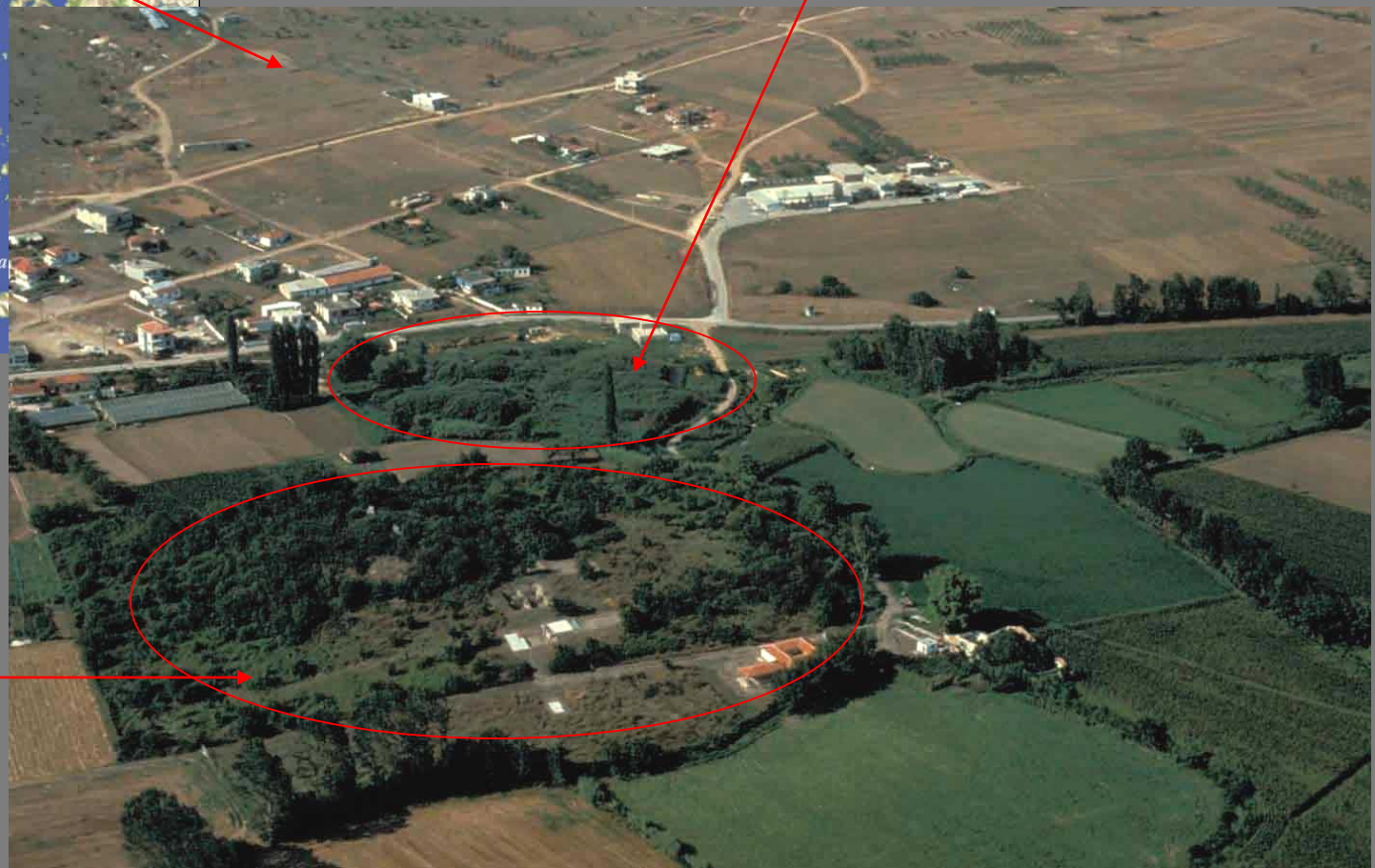
Fig. 2 : Les sites archéologiques et leur environnement pédologique dans la plaine de Drama et sur ses bordures montagneuses (d'après la carte archéologique, Koukoulis-Chrysanthaki et al, 2008/).

1. Sols calcimagnésiques et brun rubéfiés – 2. Sols bruns rubéfiés caillouteux – 3. Sols bruns rubéfiés – 4. Sols calcimagnésiques – 5. Sols à évolution verticale – 6. Sols alluviaux – 7. Sols tourbeux et hydromorphes – 8. Sites du Néolithique-Bronze Ancien – 9. Sites du Bronze et Age du Fer – 10. Toutes époques

The site



Its freshwater spring and pond




The tell

www.dikili-tash.fr




www.dikili-tash.gr



DIKILI TASH
Philippi - Greece

PRESENTATION | **RESEARCH** | **CHRONOLOGY** | **APPENDIXES** | **NEWS**




6500 | - 6000 | - 6000 | - 4000 | - 3000 | - 2000 | - 1000 | 0 | 1000 | 2000

Neolithic | Bronze Age | Historical times | Modern and contemporary Period


NEWS


- > **03.02.2012**
Applications for participants in the 2012 Summer field campaign ...
- > **03.02.2012**
Applications for participants in the 2012 Spring pottery study campaign
- > **03.02.2012**
English version on-line - We welcome the new year with the opening of the website's English edition...
- > **17-19.11.2011**
Paper presented at the International Symposium about Olive-oil and Wine production in Eastern Mediterranean during Antiquity, at Izmir ...
- > **21.10.2011**
Opening of the Dikili Tash website ...




50 years of research reveal the history of an exceptional archaeological site, from the Neolithic until today

Site map | Rights | Acknowledgements | Contacts | © Dikili Tash Research Program | Last Update : 3/02/12

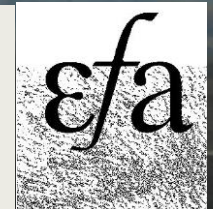






Dikili Tash: ca. 6500 -1100 BC

1920-1922 : L. Renaudin
1961-1975 : Δ. Θεοχάρης, J. Deshayes
1986-2001 : Χ. Κουκούλη-Χρυσανθάκη, R. Treuil
2008- : P. Darque Χ. Κουκούλη-Χρυσανθάκη,
Δ. Μαλαμίδου, Ζ. Τσιρτσώνη



1986-2001 (X. Κουκούλη-Χρυσανθάκη – R. Treuil)

στόχοι

- Παλαιοπεριβάλλον
- Νεολιθική εποχή
- Παλαιότερες φάσεις κατοίκησης
- Οργάνωση του οικισμού
- Τεχνικές κατασκευής
- Μέσα επιβίωσης



2008 -

**(P. Darcque, X. Κουκούλη-Χρυσανθάκη,
Δ. Μαλαμίδου, Z. Tsirtsoni)**



2008



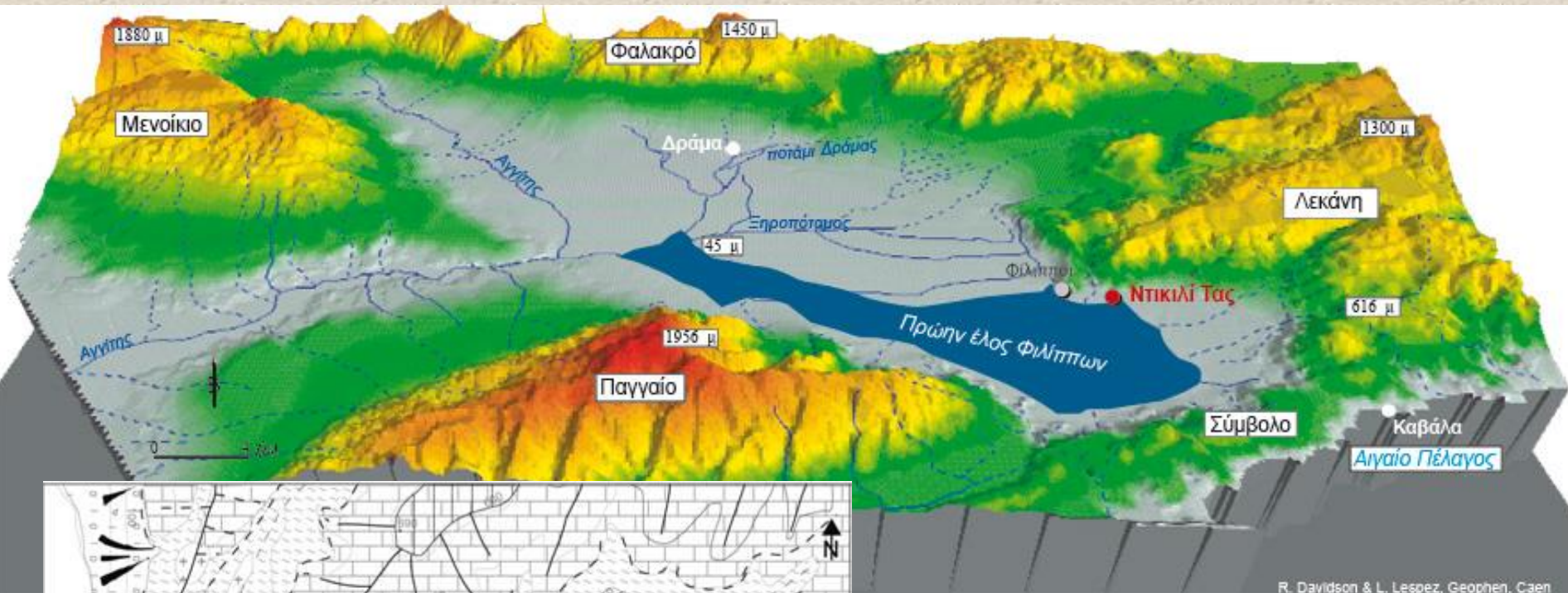
2012



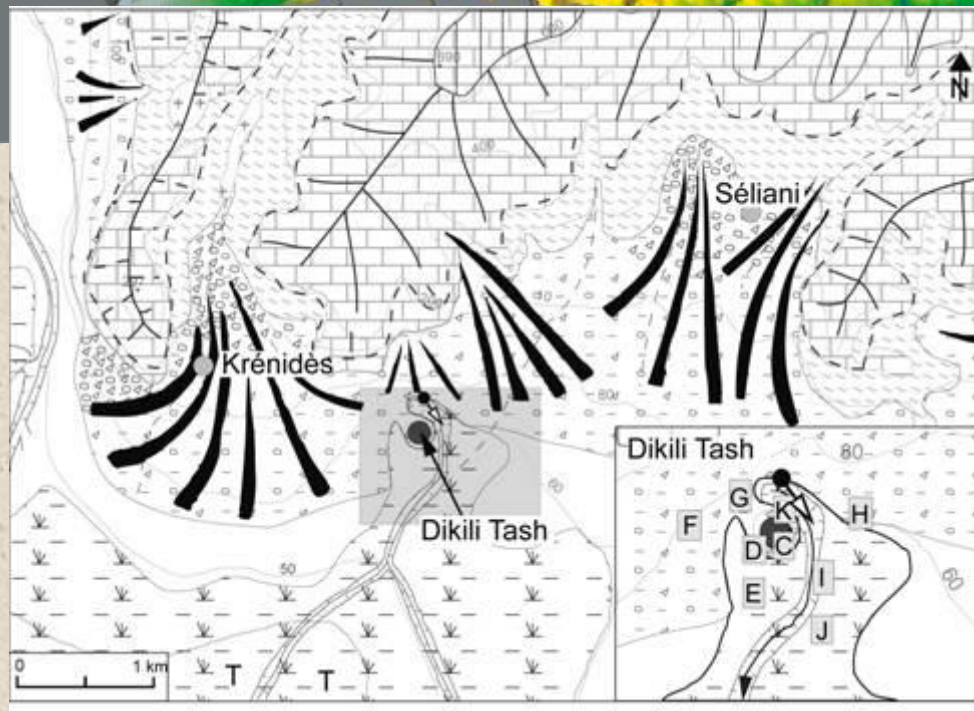
2010



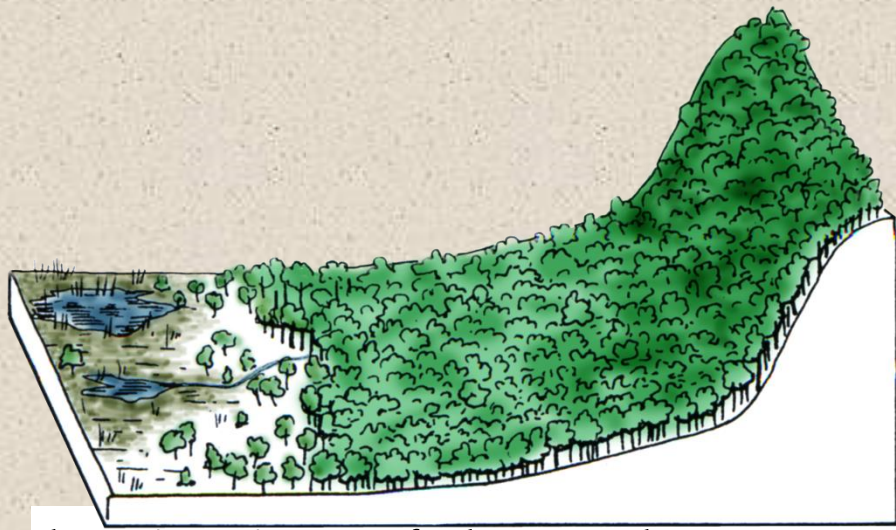
2022



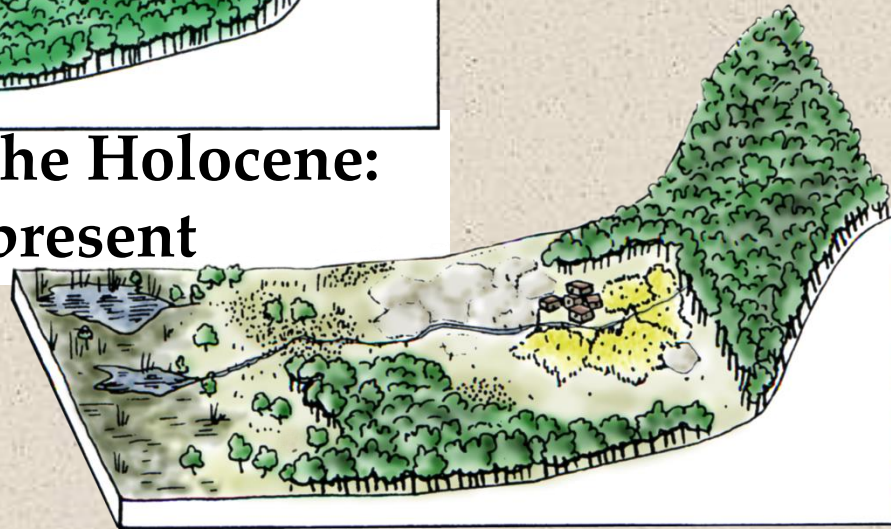
R. Davidson & L. Lespez, Geophen, Caen



- Συστηματικές γεωμορφολογικές έρευνες:
- Η βάση της τούμπας
 - Εξέλιξη του παλαιοπεριβάλλοντος



**beginning of the Holocene:
10.000 before present**



**Neolithic and Bronze Age:
7.000-1.200 B.C.**



**Byzantine and
Roman periods**

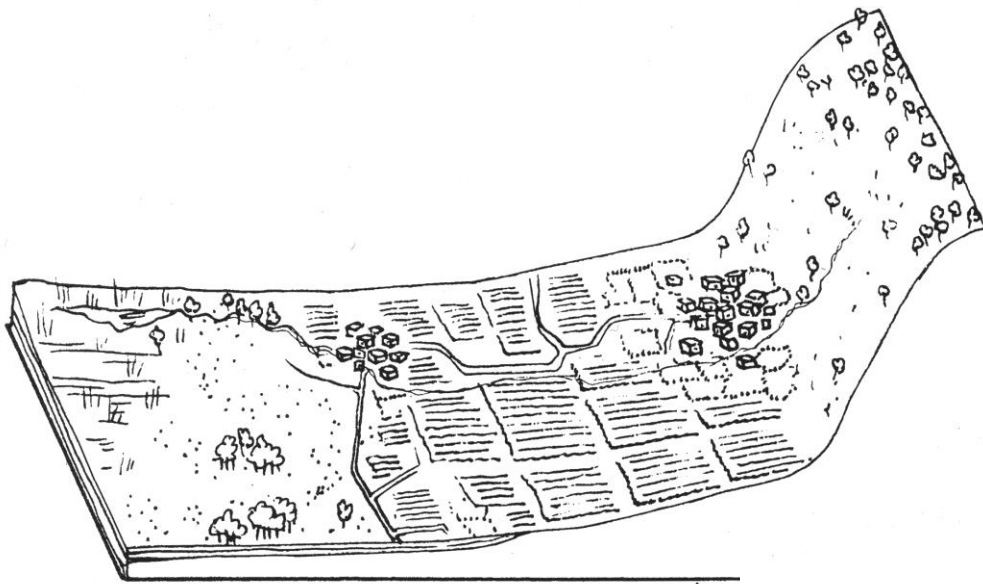


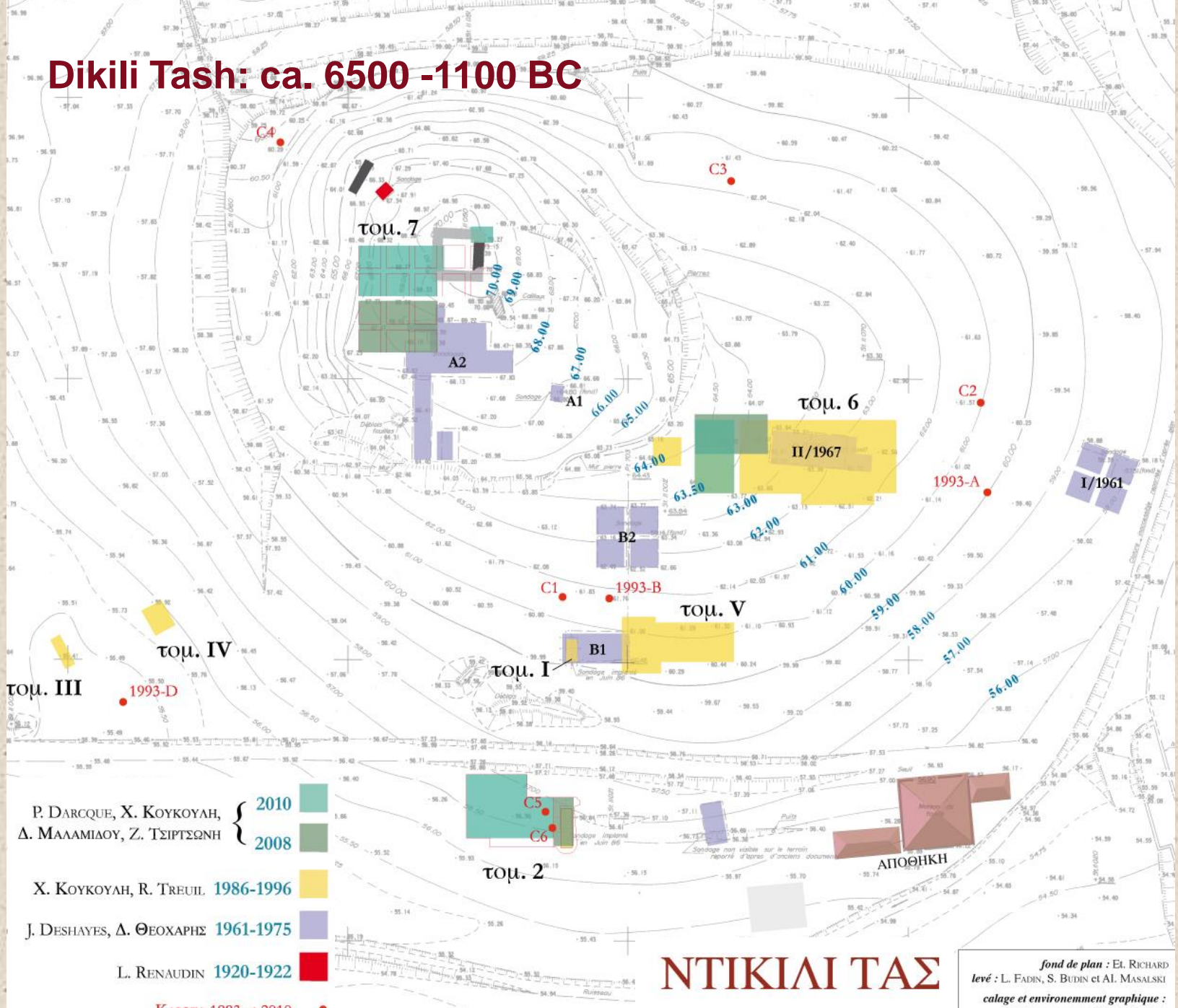
Fig. 87g. Époque ottomane. **Ottoman period: 15th-19th c.**



Fig. 87h. Époque actuelle.

today

Dikili Tash: ca. 6500 -1100 BC



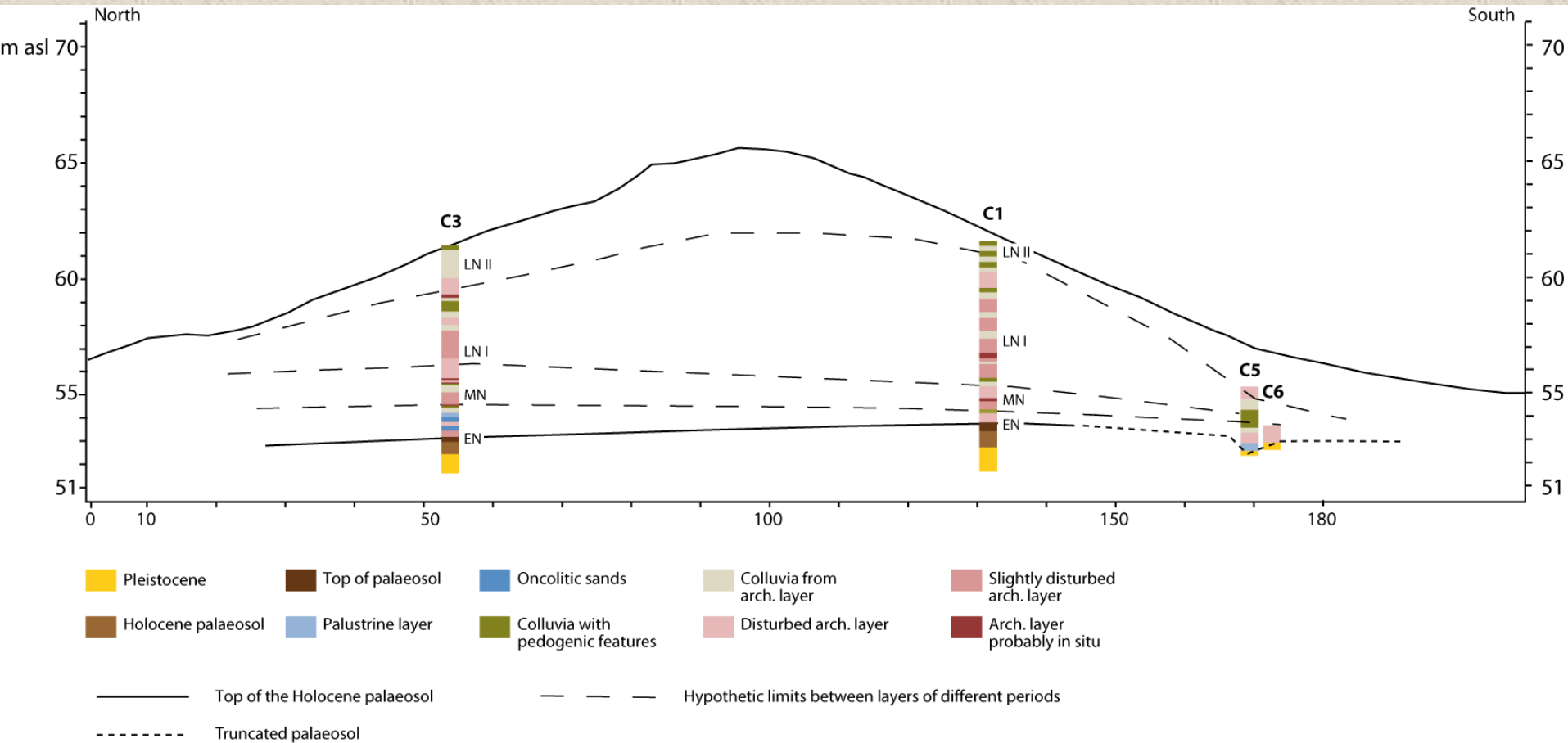
- P. DARCQUE, X. ΚΟΥΚΟΥΛΗ, Δ. ΜΑΛΑΜΙΔΟΥ, Ζ. ΤΣΙΡΤΣΩΝΗ } 2010
- 2008
- X. ΚΟΥΚΟΥΛΗ, R. TREUIL 1986-1996
- J. DESHAYES, Δ. ΘΕΟΧΑΡΗΣ 1961-1975
- L. RENAUDIN 1920-1922
- ΚΑΡΟΤΑ 1993 et 2010

ΝΤΙΚΙΑΙ ΤΑΣ

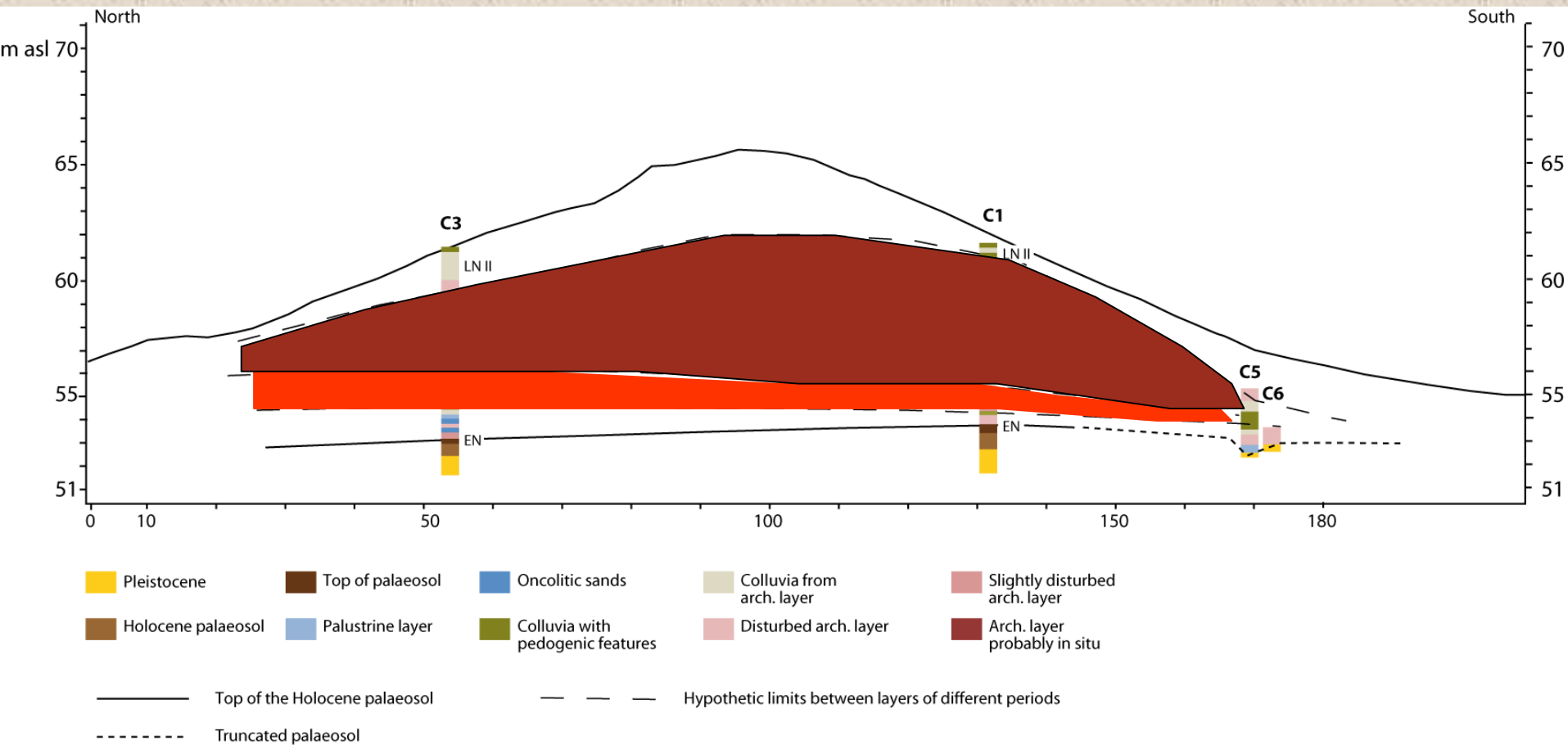
0 10 20 30 40 50 m

fond de plan : Et. RICHARD
levé : L. FADIN, S. BUDIN et Al. MASALSKI
calage et environnement graphique :
Fr. BOURGUIGNON, NOVA CELLA

Dikili Tash: ca. 6500 -1100 BC

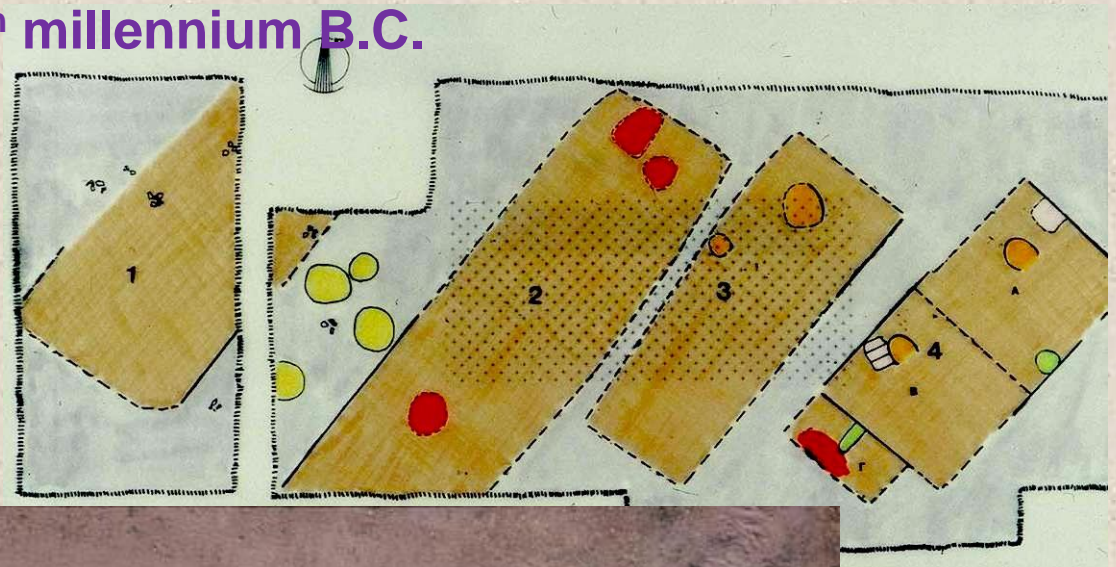


Dikili Tash: ca. 6500 -1100 BC



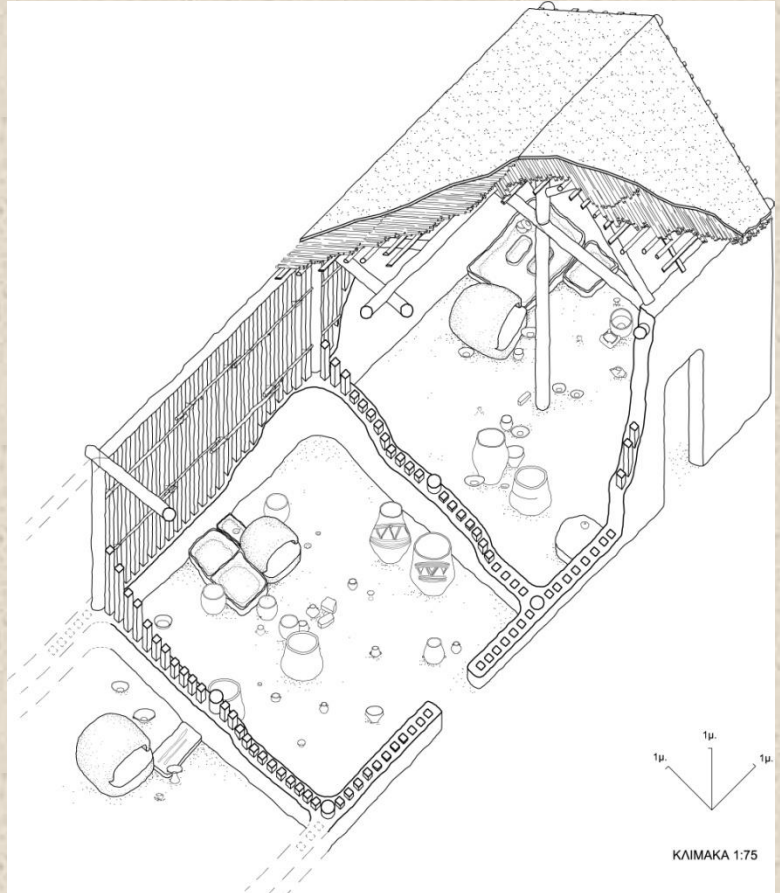
Νεότερη Νεολιθική II, τέλος 5ης χιλιετίας π.Χ.
Late Neolithic II, 2nd half of 5th millennium B.C.

Ανασκαφή σε μεγάλη επιφάνεια



House complex in sector 6

Νεότερη Νεολιθική ΙΙ, 4800-4200 π.Χ.
Late Neolithic II, 4800-4200 B.C.





FLOTATION-WATER SIEVE

Επίπλευση – νεροκόσκινο

και διαλογή βαριών υπολοίπων



House 1



contextual, artefactual and chemical evidence pointing towards wine making

House 1 – charred remains

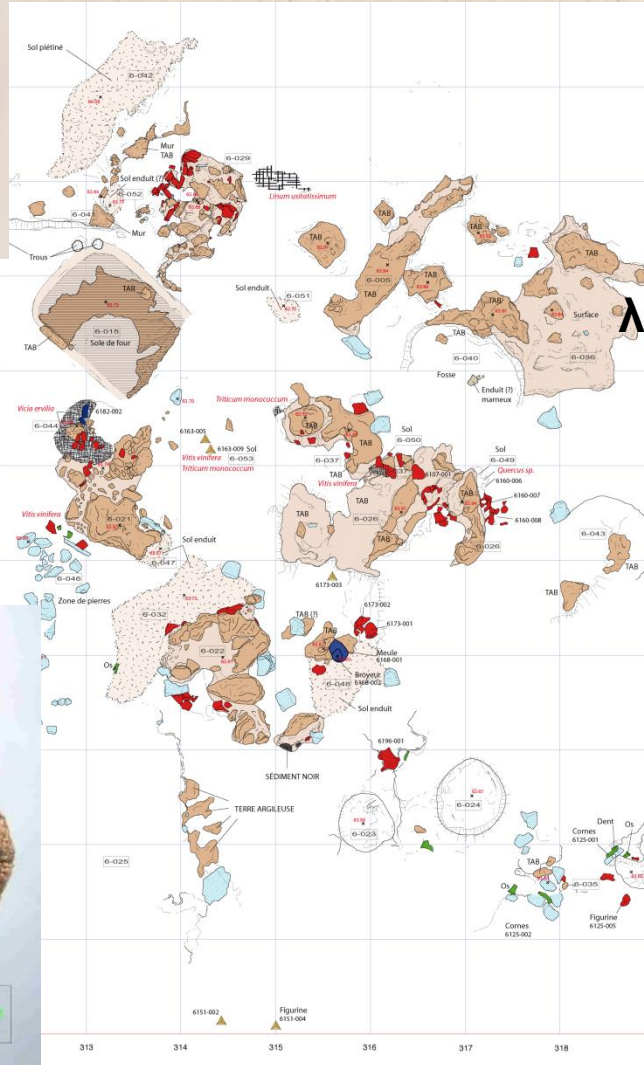


ρόβι (*vicia ervilia*)

λινάρι (*linum usitatissimum*)

σταφύλια (*vitis vinifera*)

σιτάρι (*triticum monococcum*)



House 1

άγρια αχλάδια
(*Pyrus amygdaliformis*)



House 1

pressed grapes
grape pips
grape skins

...and vitis charcoal



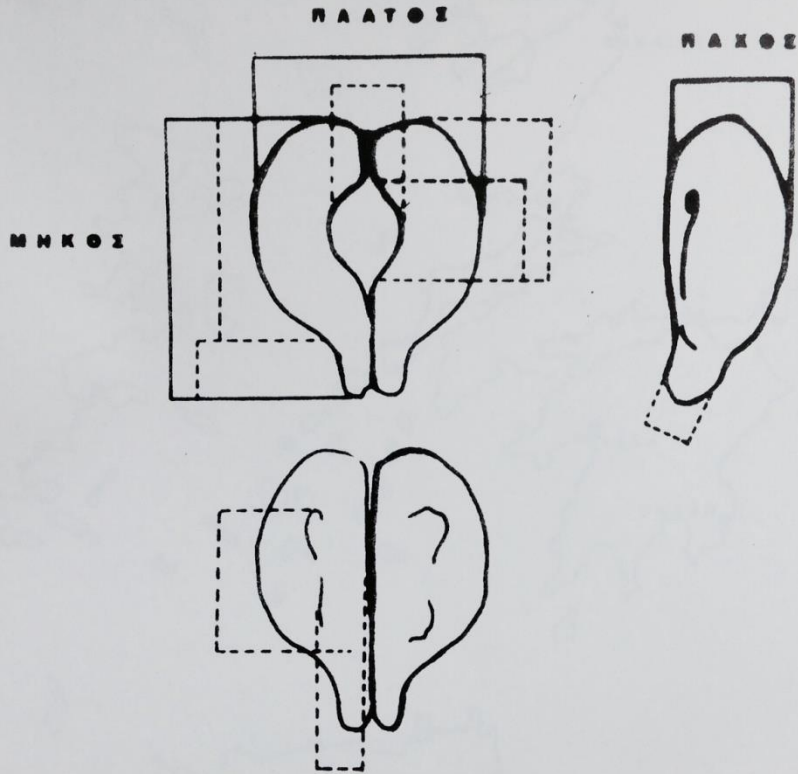
φρέσκοι καρποί;
σταφίδες;
στέμφυλα (=τσίπουρα);



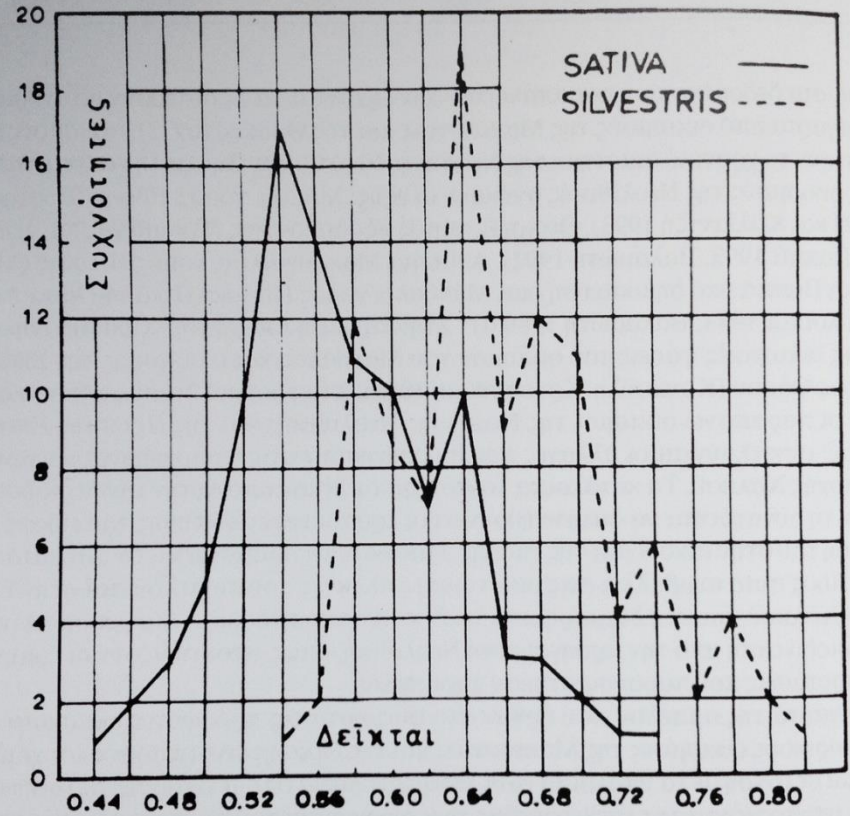
fresh grapes?
raisins?
wine pressings?



άγριο ή εξημερωμένο είδος αμπέλου;



wild or domesticated?



Σχ. 4. Διακύμανση του δείκτη πλάτος / μήκος των γιγάρτων στην εξημερωμένη (*sativa*) και την άγρια (*sylvestris*) άμπελο (κατά Stummer, Λογοθέτης 1970).



(*Vitis vinifera sylvestris*)



μορφολογικά τα κουκούτσια είναι εντός του εύρους της αγρίας αμπέλου

the Dikili Tash grape pips have been identified as wild

αλλά μπορεί η σχέση των ανθρώπων με το φυτό να ήταν αυτή μιας αρχόμενης καλλιέργειας που ακόμη δεν είχε αφήσει το εμφανές αποτύπωμα στα γίγαρτα

harvested from wild plants, or cultivated plants whose pips had not yet developed the morphological characteristics of domestication

έχουμε σίγουρα οينوποίηση; wine making?

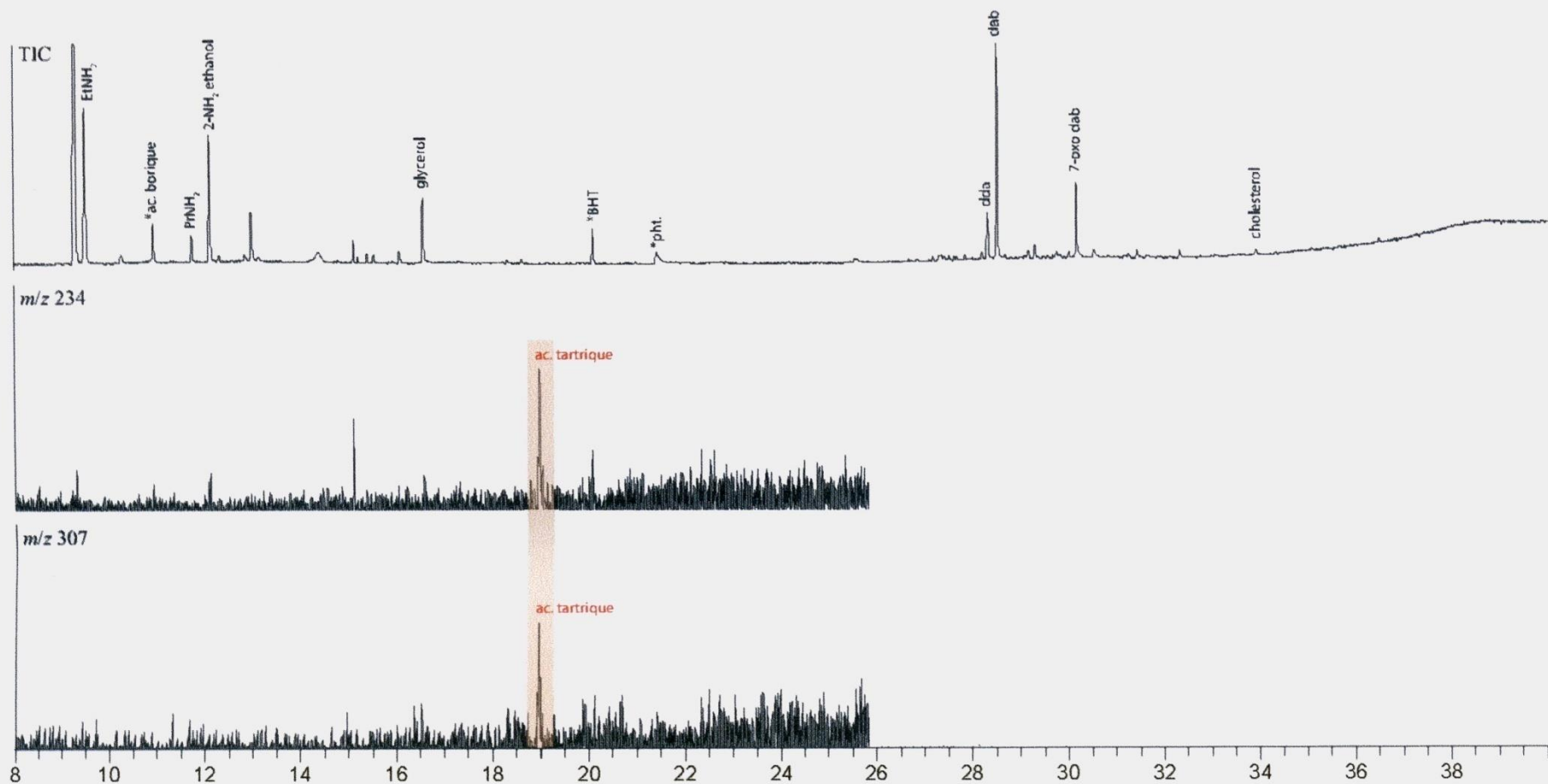
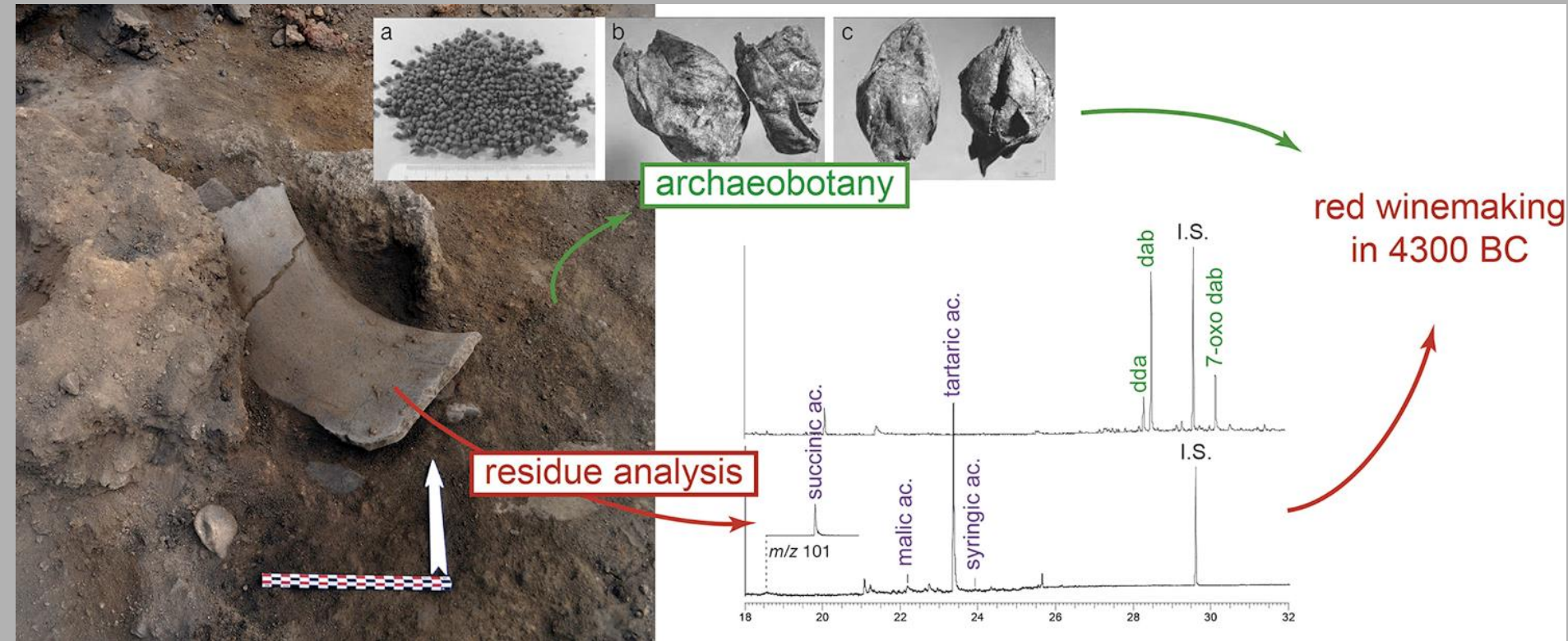


Figure 2. Chromatogramme de l'extrait dépolymérisé en présence de BF_3/MeOH , céramique DKT 2010 US 6183 n° 2 (colonne ZB5-MSi 20 m \times 0.18 mm, détection EIMS).

chromatography and mass spectrometry tartaric, malic, syringic acids + succinic and pyruvic acids



Garnier N., Valamoti S. M., Prehistoric wine-making at Dikili Tash (Northern Greece): Integrating residue analysis and archaeobotany, *Journal of Archaeological Science*, Volume 74, 2016, p. 195–206.
<http://dx.doi.org/10.1016/j.jas.2016.03.003>

House 1, destroyed by fire
while grape juice
was being fermented
together with grape pressings

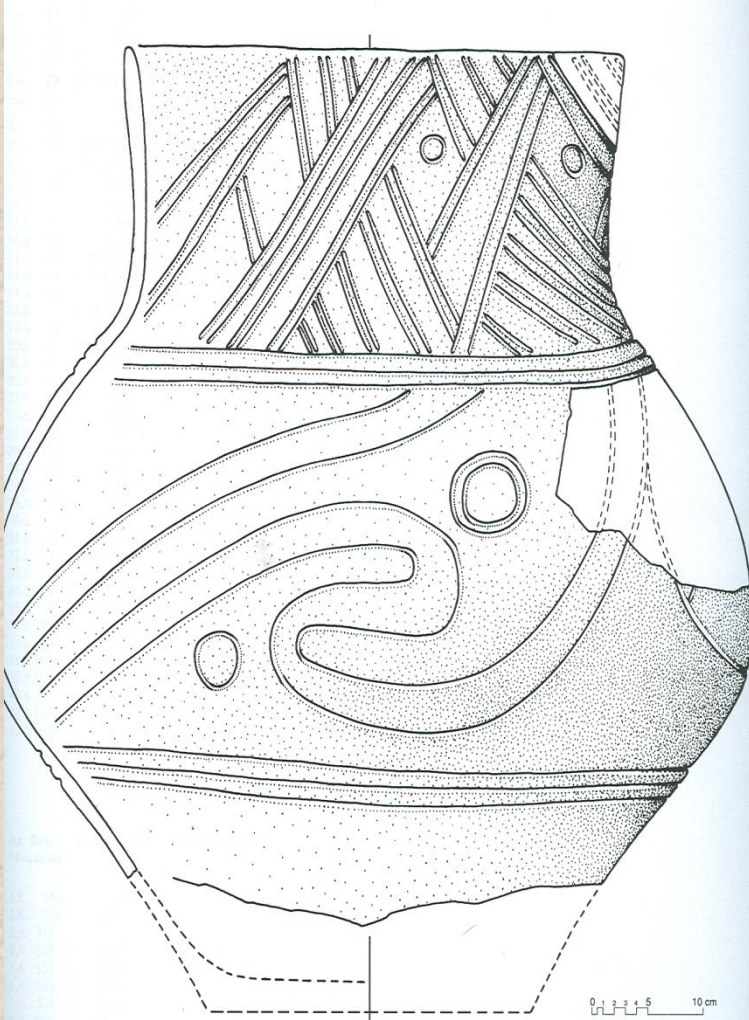


έχουμε σίγουρα
οινοποίηση:
ερυθρός οίνος

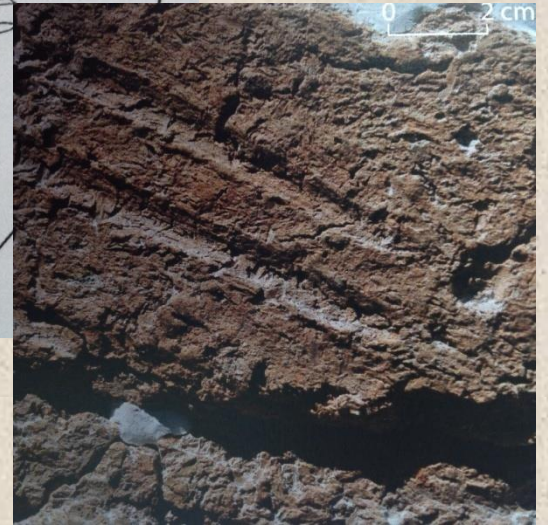
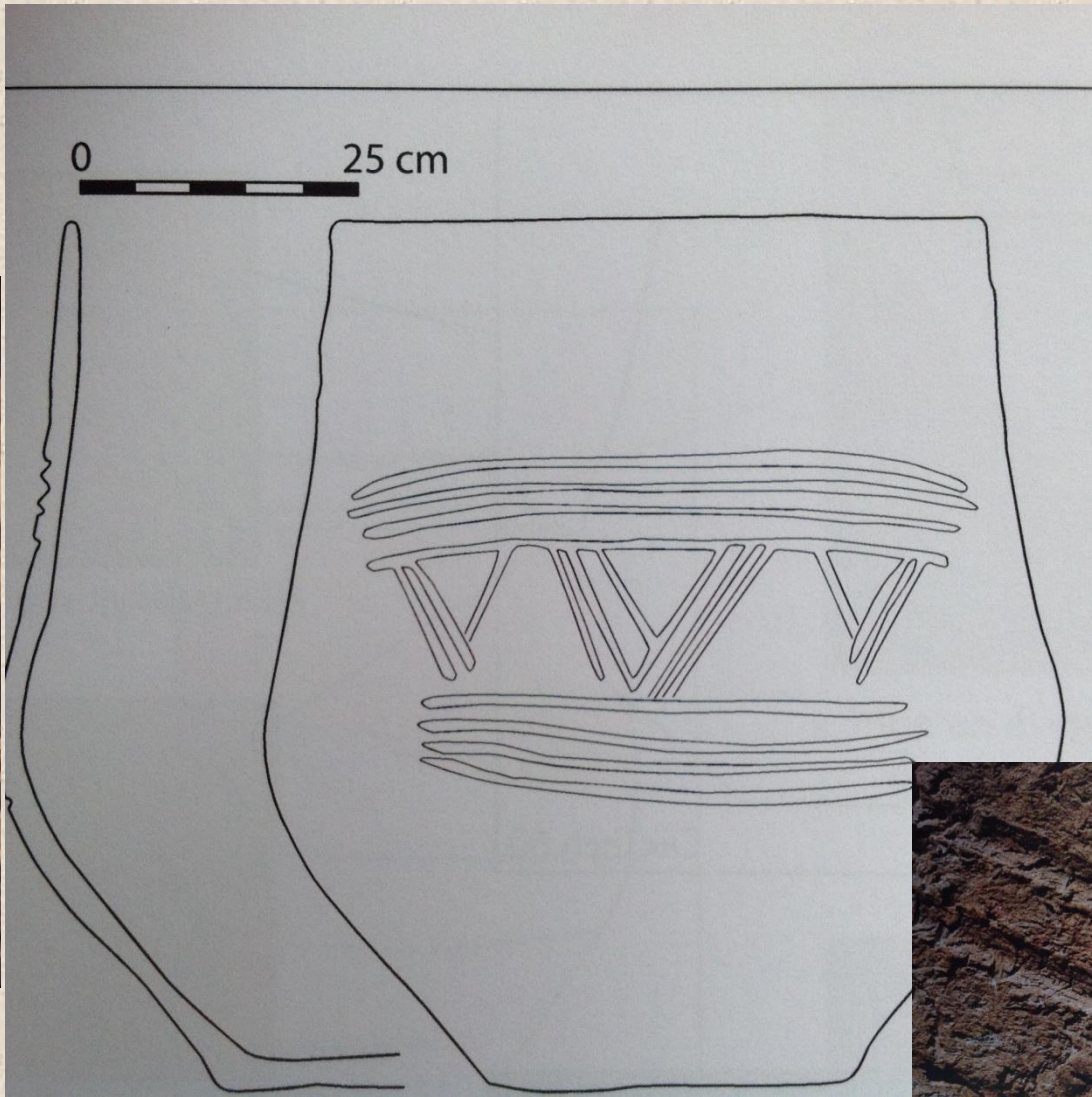


red wine

τομέας 6: οικία 3



τομέας 6: οικία 4



τομέας 9



τομέας 6: οικία 1



wine making,
serving
and consumption





6323-001



6323-003



6323-005

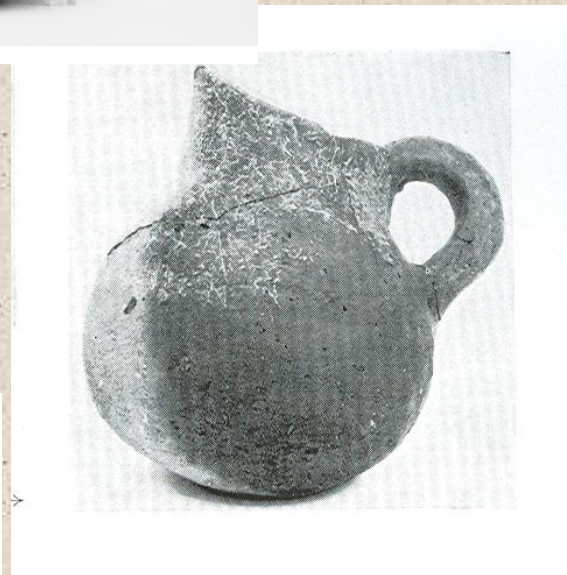
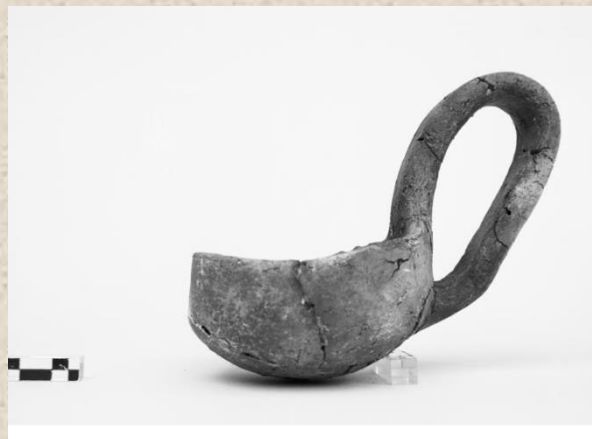


6329-002



6323-004

Early Bronze Age pottery from Dikili Tash





ΕΥΧΑΡΙΣΤΩ!
thank you!

Valamoti S. M., Mangafa M., Koukouli-Chrysanthaki Ch. and Malamidou D.,
2007, Grape-pressings from northern Greece : the earliest wine in Aegean ?,
Antiquity 81, 54-61.

Valamoti S. M., Darcque P., Koukouli-Chryssanthaki H., Malamidou D., and
Tsirtsoni Z., **2015**, An archaeobotanical investigation of prehistoric grape vine
exploitation and wine making in northern Greece: recent finds from Dikili Tash. In:
Diler A., Şenol K. and Aydinoğlu U. (eds), *Olive Oil and wine production in*
Eastern Mediterranean during Antiquity, Proceedings of the International
Symposium, Izmir, 17-19 November 2011, Ege Universitesi Yayinlari No 189,
Izmir, 125-139.