

# INVESTIGATION OF GENETIC RESOURCES OF *VITIS VINIFERA* *L. SUBSP. SYLVESTRIS* (C.C. GMEL.) HEGI IN SERBIA

Prof. dr Dragan Nikolić – University of Belgrade

Prof. dr Dragoslav Ivanišević – University of Novi Sad

10.10.2023., Kavala, Greece



# Previous investigations were focus on:

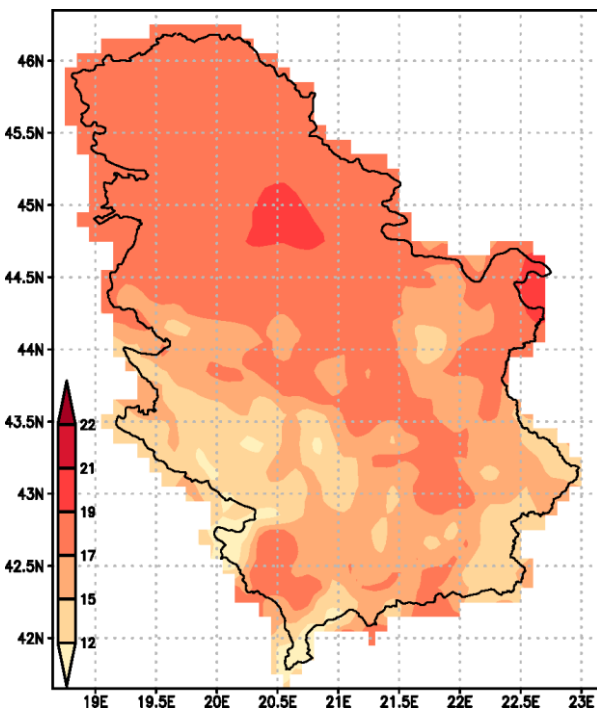
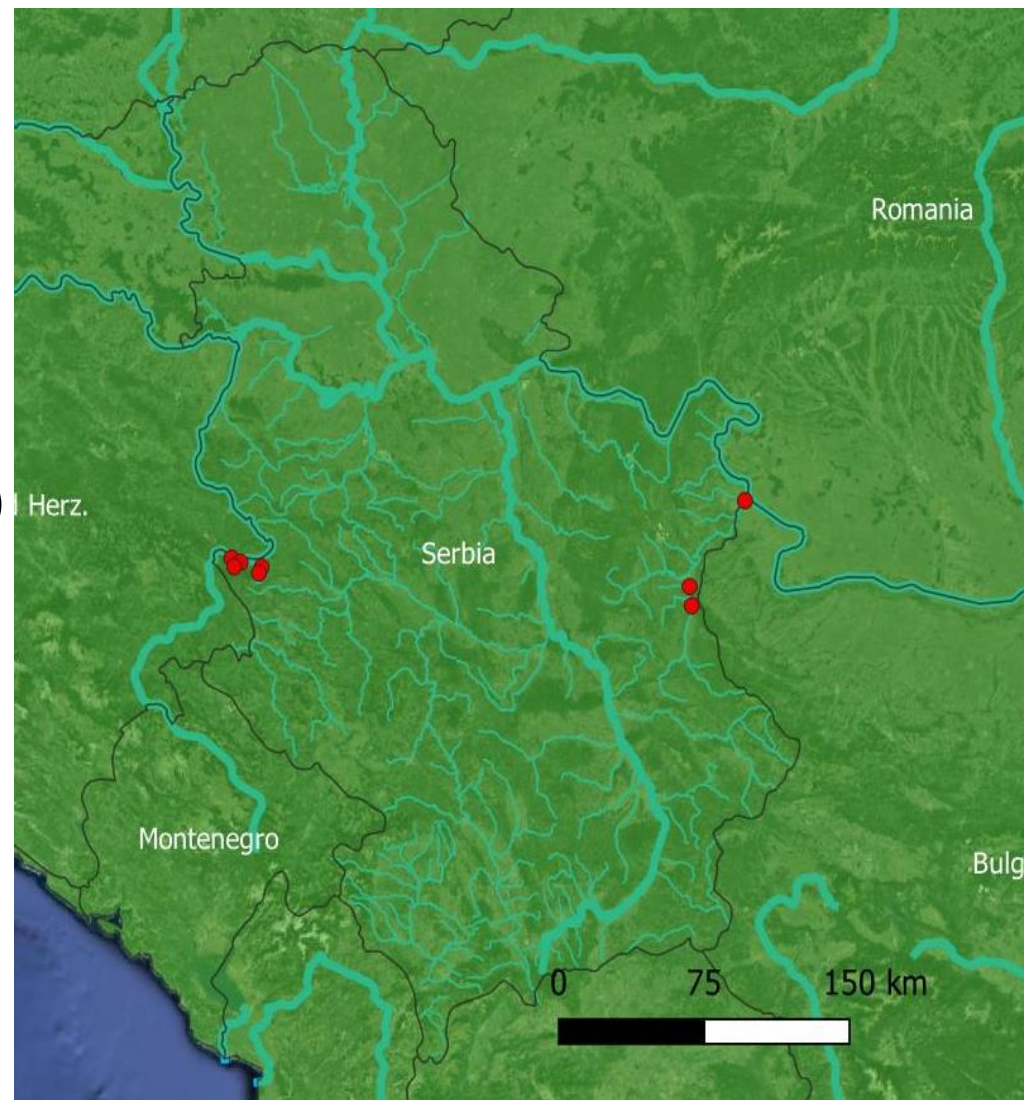
- Sava valley
- Danube valley
- Morava valley

No results

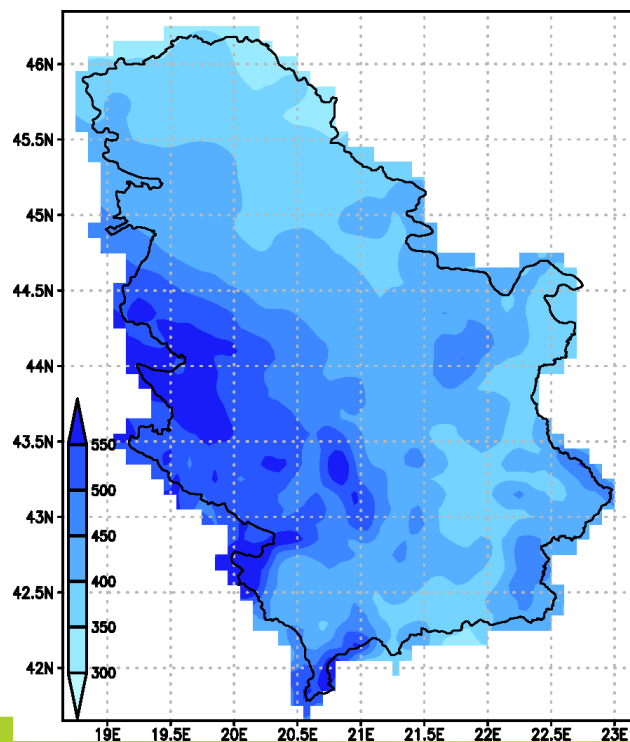


# This time we focus on:

- Tara National Park:
  - Drina and Rača rivers
  - Perućac lake
- River Timok (Srbovo)
- River White Timok (Zaječar)



Mean vegetation air temperature (2000-2019)



Total vegetation amount of precipitation (2000-2019)

# Tara National Park

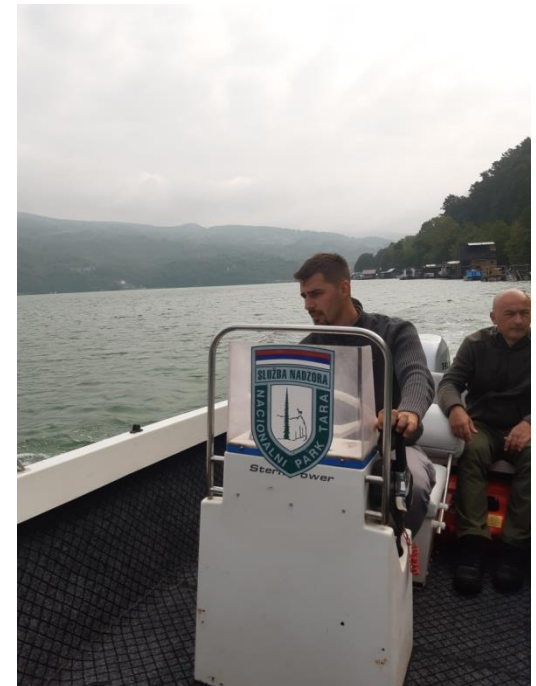
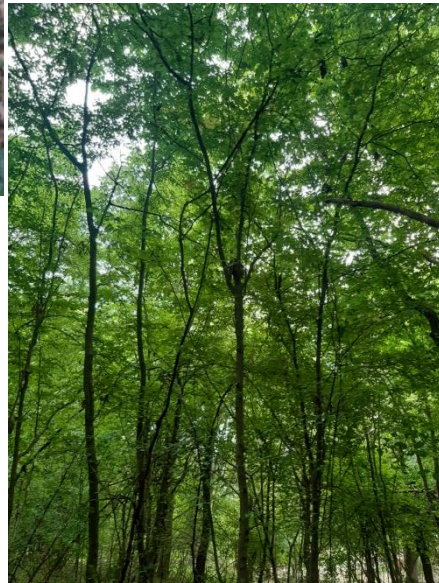
- Localities:
  - Gaočići (400m)
  - Perućac (300m)
  - Rastište (580m)
  - Rača (550m)



# Gaočiči



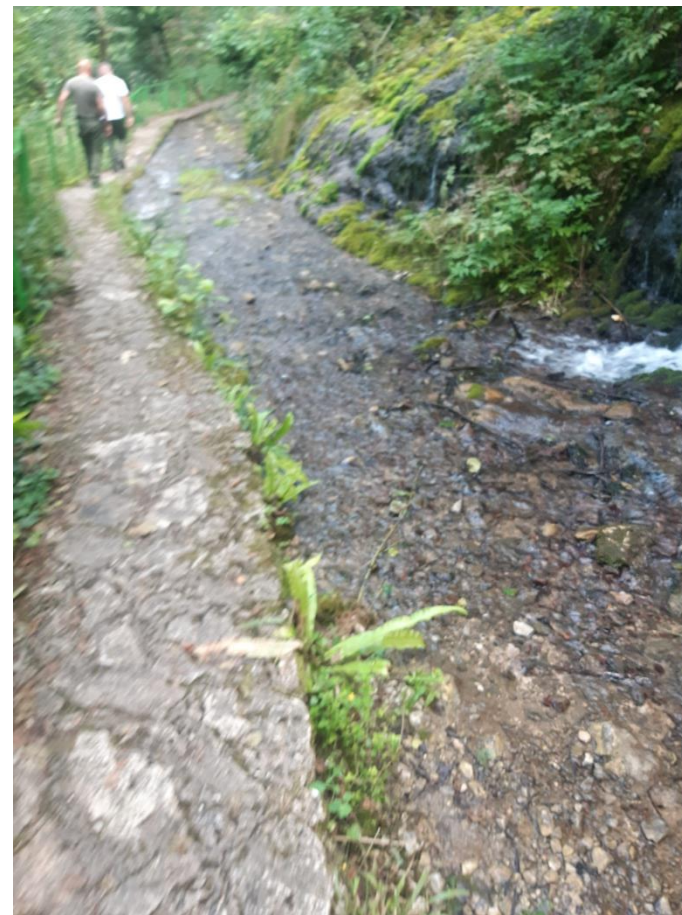
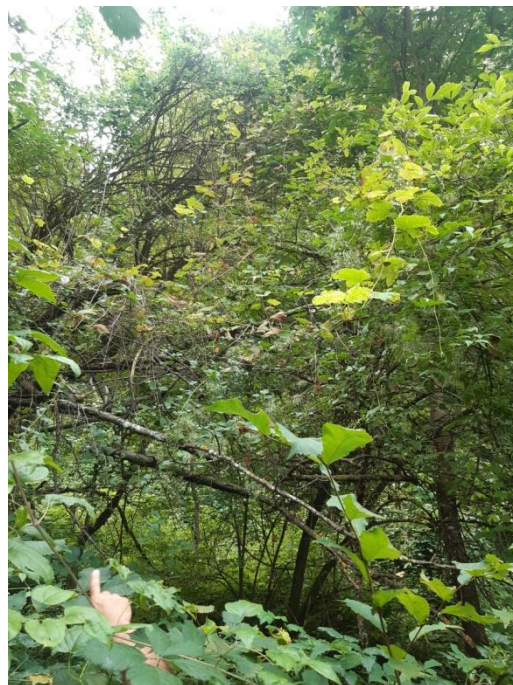
# Perućac



# Rastište



# Rača





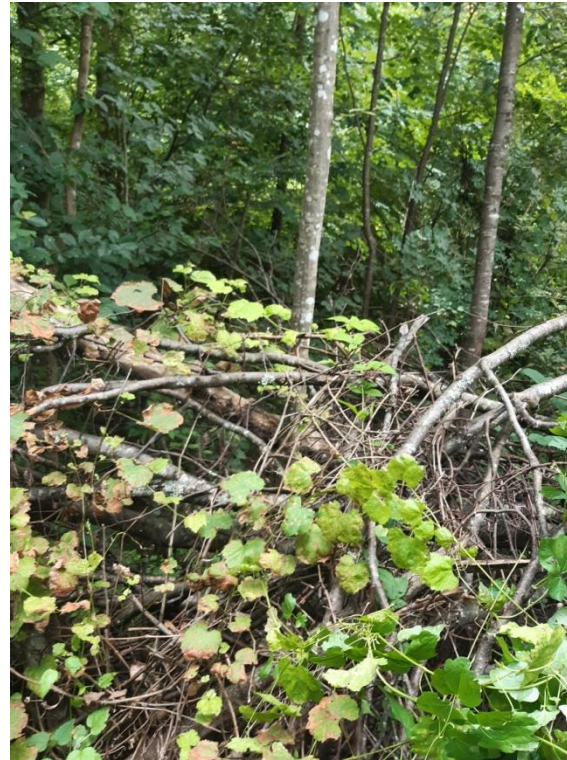
Raca 1



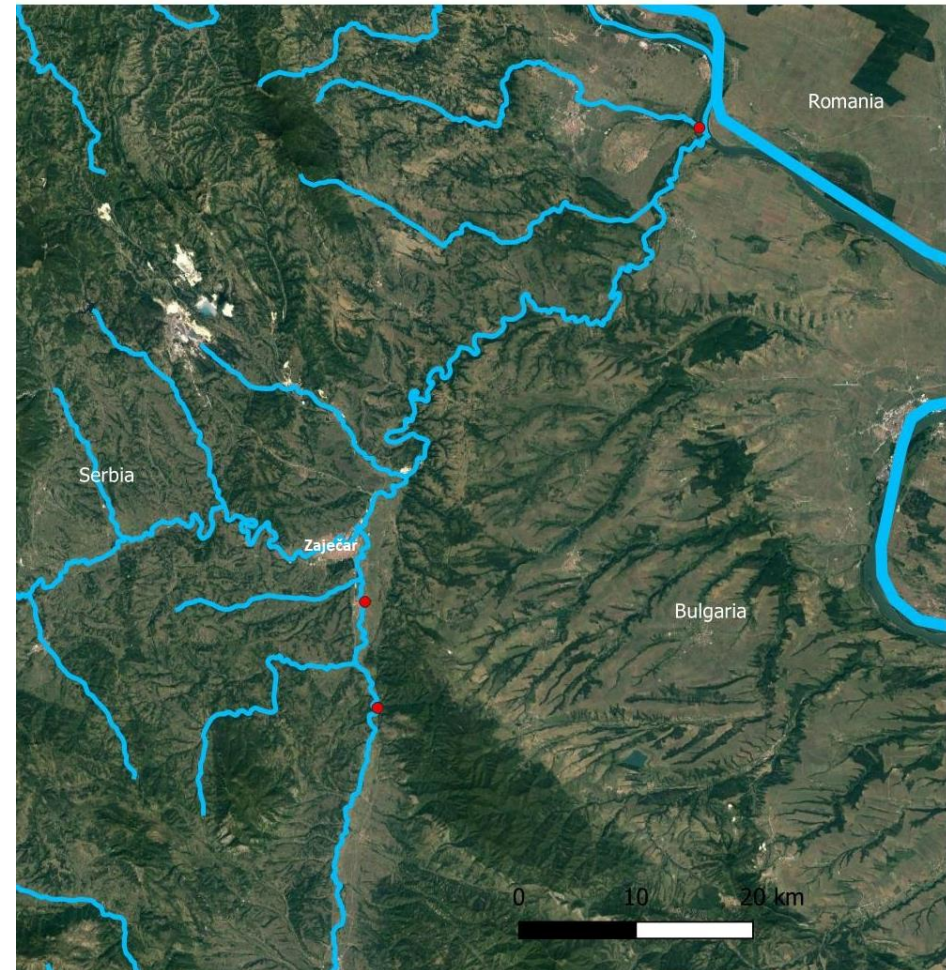
Raca 2



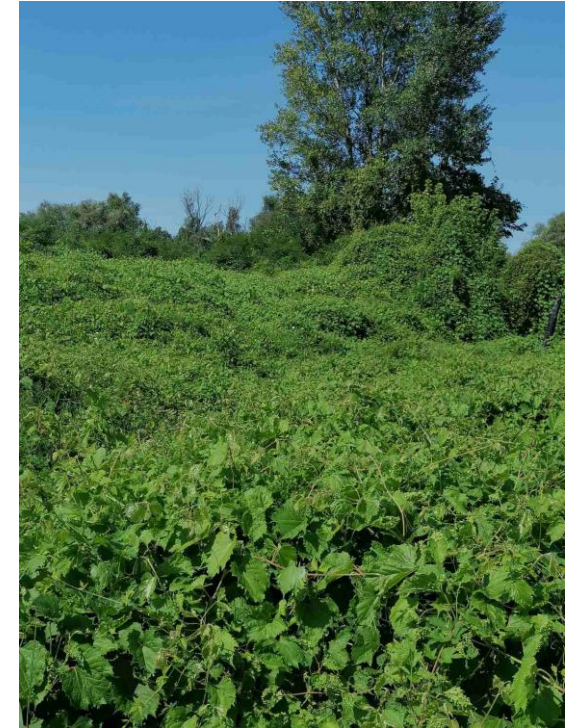
Raca 3



- River Timok (Srbovo)
- River White Timok (Zaječar)

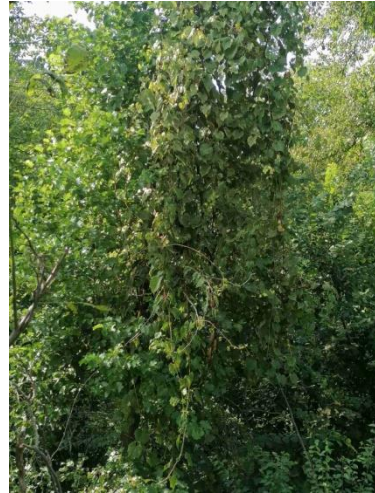
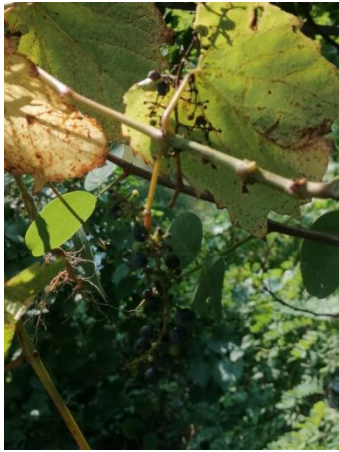


# River Timok – Srbovo (50m)

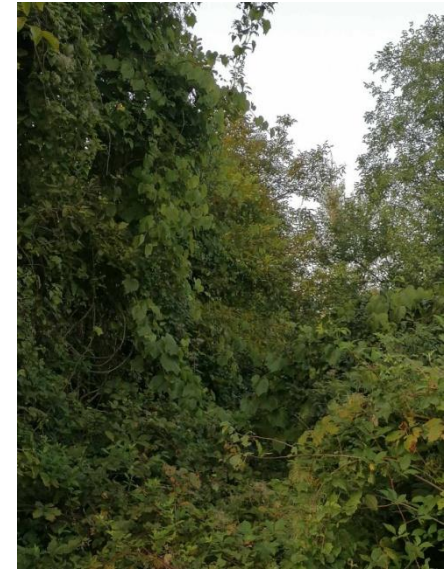


# River White Timok (Zaječar)

Grljan  
(150m)



Vratarnica  
(170m)



# Next step

- The SSR evaluation is in progress.





**THANK YOU**